

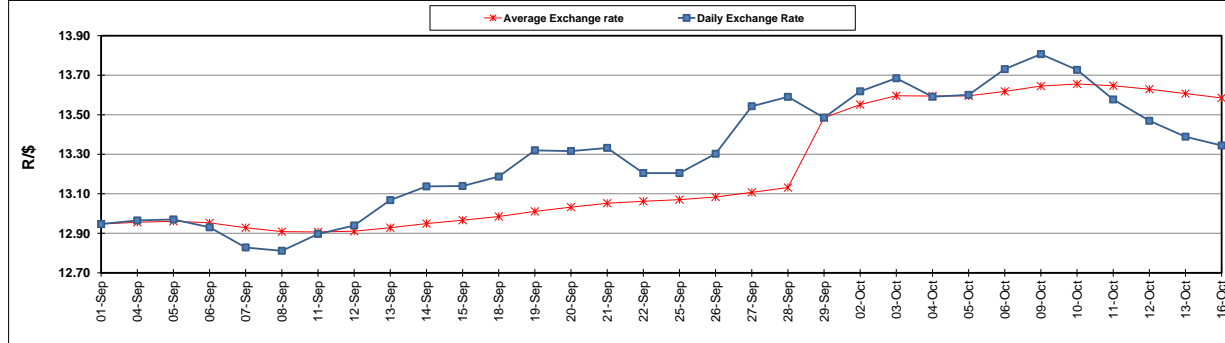
	PETROL 95 ULP	PETROL 93 ULP & LRP	DIESEL 0.05%	DIESEL 0.005%	ILL. PAR.
GAUTENG PUMP PRICE (SA c/l) AS FROM 04/10/2017	1 401.000	1 374.000	-	-	-
WHOLESALE PRICE (SA c/l) AS FROM 04/10/2017	-	-	1 212.330	1 217.730	771.088
SINGLE NATIONAL MAXIMUM RETAIL PRICE	-	-	-	-	992.000
BASIC FUEL PRICE - 16/10/2017 (SA c/l)	612.942	596.806	617.183	625.852	607.173
PRESS RELEASE CONTRIBUTION TO BFP 04/10/2017 - 16/10/2017 (SA c/l)	615.070	598.070	600.630	606.030	600.128
UNIT OVER/(UNDER) RECOVERY (SA c/l) - 16/10/2017	2.128	1.264	(16.553)	(19.822)	(7.045)
AVERAGE BASIC FUEL PRICE 29/09/2017 - 16/10/2017	609.239	592.928	612.712	622.459	608.416
AVERAGE UNIT OVER/(UNDER) RECOVERY 29/09/2017 - 16/10/2017	(1.419)	(1.108)	(22.582)	(26.929)	(18.038)

ANALYSIS MOVEMENT OF AVERAGE OVER/(UNDER) RECOVERY

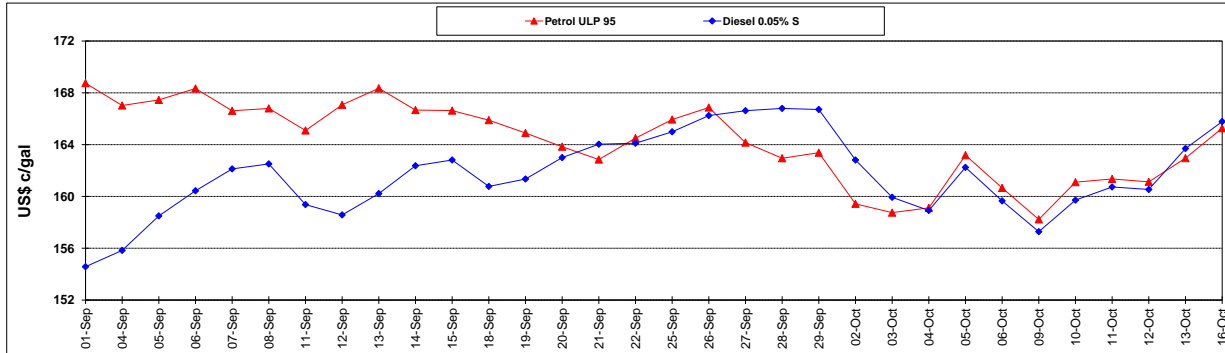
	PETROL 95	PETROL 93	DIESEL 0.05%	DIESEL 0.005%	ILL. PAR.
- MOVEMENT IN INTERNATIONAL PRODUCT PRICES	18.923	18.689	(2.124)	(6.146)	2.276
- MOVEMENT IN EXCHANGE RATE	(20.342)	(19.797)	(20.458)	(20.783)	(20.314)
AVERAGE UNIT OVER/(UNDER) RECOVERY 29/09/2017 - 16/10/2017	(1.419)	(1.108)	(22.582)	(26.929)	(18.038)

R/\$ EXCHANGE RATE - (R/\$ 13.3443 - 16/10/2017)

EXCHANGE RATE USED IN BASIC FUEL PRICE



INTERNATIONAL PRODUCT PRICES OF BASKET USED IN BASIC FUEL PRICE



BASIC FUEL PRICE IN SA CENTS PER LITRE

