

## UPDATE OF THE BASIC FUEL PRICE

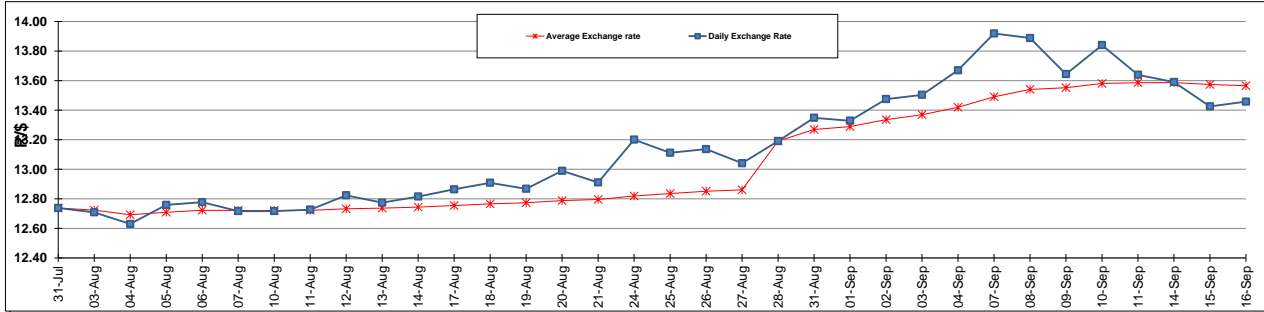
	PETROL 95 ULP	PETROL 93 ULP & LRP	DIESEL 0.05%	DIESEL 0.005%	ILL. PAR.
GAUTENG PUMP PRICE (SA c/l) AS FROM 02/09/2015	1,257.000	1,232.000	-	-	-
WHOLESALE PRICE (SA c/l) AS FROM 02/09/2015	-	-	1,040.970	1,049.370	661.828
SINGLE NATIONAL MAXIMUM RETAIL PRICE	-	-	-	-	847.000
BASIC FUEL PRICE - 16/09/2015 (SA c/l)	583.413	562.216	565.239	571.273	554.945
PRESS RELEASE CONTRIBUTION TO BFP 02/09/2015 - 16/09/2015 (SA c/l)	578.870	563.870	512.630	521.030	504.128
UNIT OVER/(UNDER) RECOVERY (SA c/l) - 16/09/2015	(4.543)	1.654	(52.609)	(50.243)	(50.817)
AVERAGE BASIC FUEL PRICE 28/08/2015 - 16/09/2015	594.675	572.319	574.355	581.110	563.162
AVERAGE UNIT OVER/(UNDER) RECOVERY 28/08/2015 - 16/09/2015	(0.033)	7.323	(50.154)	(49.151)	(47.248)

### ANALYSIS MOVEMENT OF AVERAGE OVER/(UNDER) RECOVERY

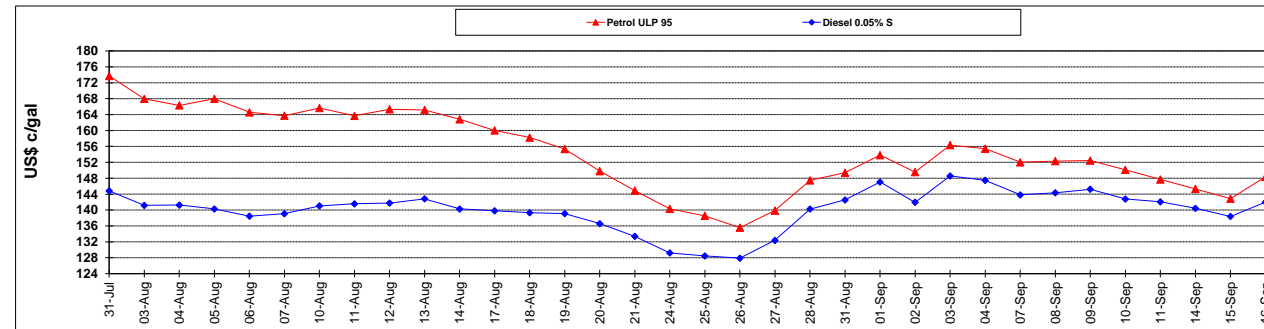
	PETROL 95	PETROL 93	DIESEL 0.05%	DIESEL 0.005%	ILL. PAR.
- MOVEMENT IN INTERNATIONAL PRODUCT PRICES	30.866	37.061	(20.310)	(18.956)	(17.985)
- MOVEMENT IN EXCHANGE RATE	(30.900)	(29.739)	(29.844)	(30.195)	(29.263)
AVERAGE UNIT OVER/(UNDER) RECOVERY 28/08/2015 - 16/09/2015	(0.033)	7.323	(50.154)	(49.151)	(47.248)

**R/\$ EXCHANGE RATE - (R/\$ 13.4577 - 16/09/2015)**

### EXCHANGE RATE USED IN BASIC FUEL PRICE



### INTERNATIONAL PRODUCT PRICES OF BASKET USED IN BASIC FUEL PRICE



### BASIC FUEL PRICE IN SA CENTS PER LITRE

