

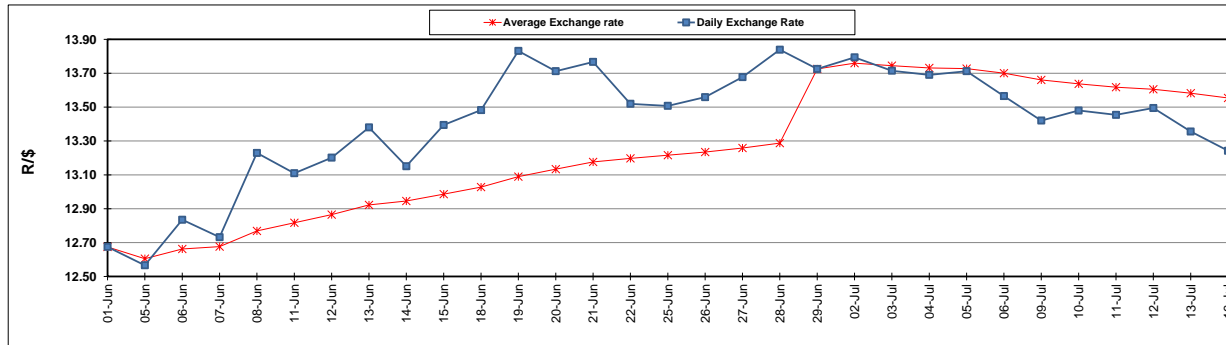
	PETROL 95 ULP	PETROL 93 ULP & LRP	DIESEL 0.05%	DIESEL 0.005%	ILL. PAR.
GAUTENG PUMP PRICE (SA c/l) AS FROM 04/07/2018	1 602.000	1 581.000	-	-	-
WHOLESALE PRICE (SA c/l) AS FROM 04/07/2018	-	-	1 444.830	1 449.230	949.088
SINGLE NATIONAL MAXIMUM RETAIL PRICE	-	-	-	-	1 228.000
BASIC FUEL PRICE - 16/07/2018 (SA c/l)	719.443	710.135	735.145	739.987	747.838
PRESS RELEASE CONTRIBUTION TO BFP 04/07/2018 - 16/07/2018 (SA c/l)	750.070	739.070	771.630	776.030	776.128
UNIT OVER/(UNDER) RECOVERY - 16/07/2018 (SA c/l)	30.627	28.935	36.485	36.043	28.290
AVERAGE BASIC FUEL PRICE 29/06/2018 - 16/07/2018	757.671	747.527	774.130	779.203	788.564
AVERAGE UNIT OVER/(UNDER) RECOVERY 29/06/2018 - 16/07/2018	(13.351)	(15.207)	(9.000)	(9.173)	(17.936)

### ANALYSIS MOVEMENT OF AVERAGE OVER/(UNDER) RECOVERY

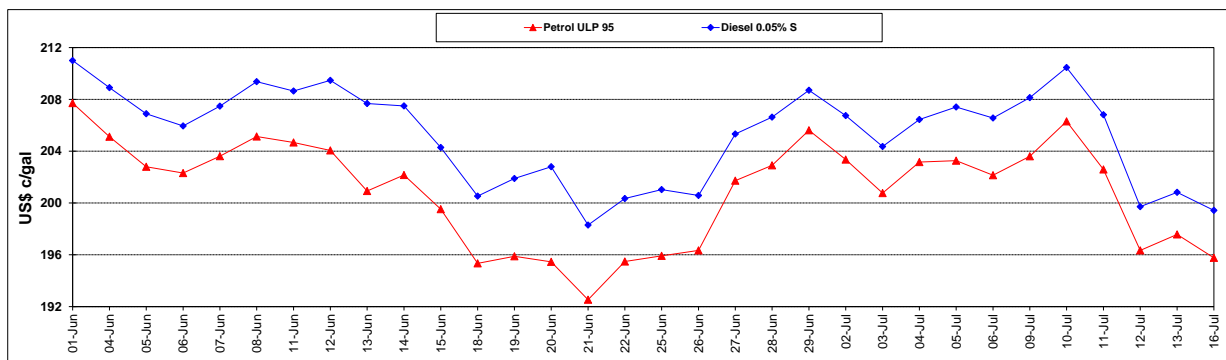
	PETROL 95	PETROL 93	DIESEL 0.05%	DIESEL 0.005%	ILL. PAR.
- MOVEMENT IN INTERNATIONAL PRODUCT PRICES	1.569	(0.487)	6.244	6.171	(2.408)
- MOVEMENT IN EXCHANGE RATE	(14.920)	(14.720)	(15.244)	(15.344)	(15.528)
AVERAGE UNIT OVER/(UNDER) RECOVERY 29/06/2018 - 16/07/2018	(13.351)	(15.207)	(9.000)	(9.173)	(17.936)

### R/\$ EXCHANGE RATE - (R/\$13.2423 - 16/07/2018)

#### EXCHANGE RATE USED IN BASIC FUEL PRICE



#### INTERNATIONAL PRODUCT PRICES OF BASKET USED IN BASIC FUEL PRICE



#### BASIC FUEL PRICE IN SA CENTS PER LITRE

