

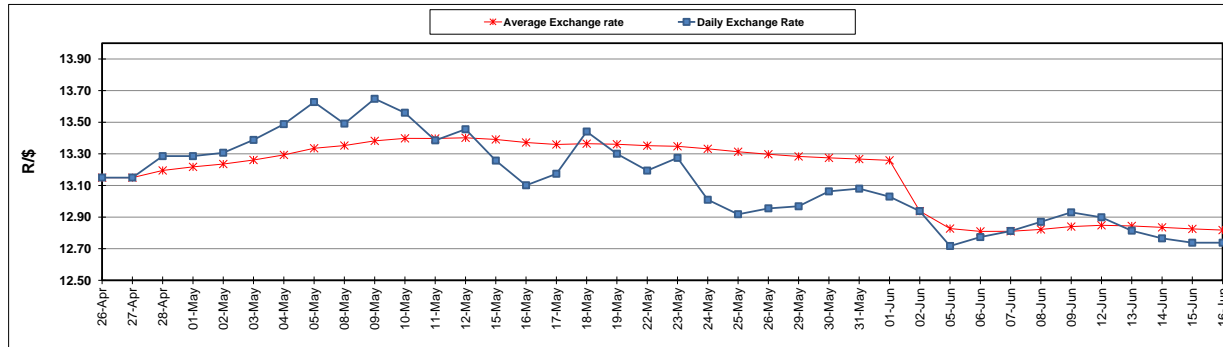
	PETROL 95 ULP	PETROL 93 ULP & LRP	DIESEL 0.05%	DIESEL 0.005%	ILL. PAR.
GAUTENG PUMP PRICE (SA c/l) AS FROM 07/06/2017	1 354.000	1 332.000	-	-	-
WHOLESALE PRICE (SA c/l) AS FROM 07/06/2017	-	-	1 157.330	1 161.730	714.088
SINGLE NATIONAL MAXIMUM RETAIL PRICE	-	-	-	-	917.000
BASIC FUEL PRICE - 16/06/2017 (SA c/l)	493.623	483.584	485.850	489.029	485.057
PRESS RELEASE CONTRIBUTION TO BFP 07/06/2017 - 16/06/2017 (SA c/l)	572.670	560.670	545.630	550.030	543.128
UNIT OVER/(UNDER) RECOVERY (SA c/l) - 16/06/2017	79.047	77.086	59.780	61.001	58.071
AVERAGE BASIC FUEL PRICE 02/06/2017 - 16/06/2017	515.605	503.274	492.325	496.098	491.565
AVERAGE UNIT OVER/(UNDER) RECOVERY 02/06/2017- 16/06/2017	63.883	64.214	59.578	60.205	57.563

ANALYSIS MOVEMENT OF AVERAGE OVER/(UNDER) RECOVERY

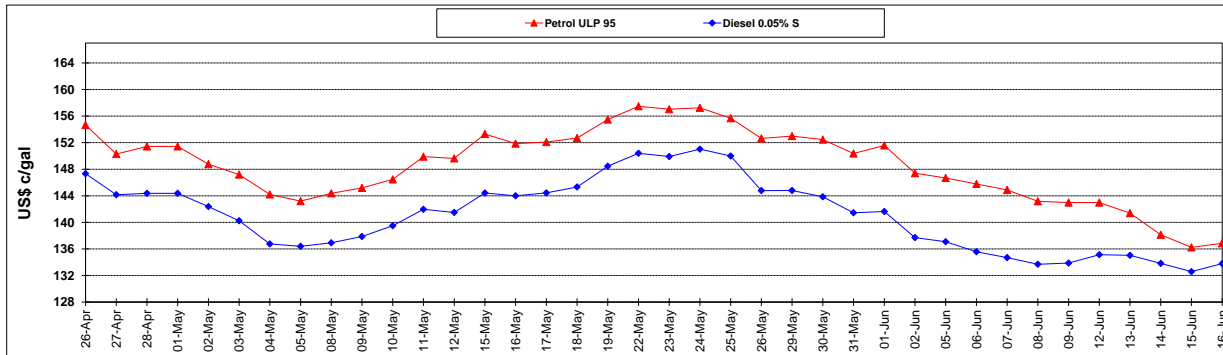
	PETROL 95	PETROL 93	DIESEL 0.05%	DIESEL 0.005%	ILL. PAR.
- MOVEMENT IN INTERNATIONAL PRODUCT PRICES	59.366	59.805	55.265	55.859	53.256
- MOVEMENT IN EXCHANGE RATE	4.517	4.409	4.313	4.346	4.307
AVERAGE UNIT OVER/(UNDER) RECOVERY 02/06/2017 - 16/06/2017	63.883	64.214	59.578	60.205	57.563

R/\$ EXCHANGE RATE - (R/\$ 12.7380 - 16/06/2017)

EXCHANGE RATE USED IN BASIC FUEL PRICE



INTERNATIONAL PRODUCT PRICES OF BASKET USED IN BASIC FUEL PRICE



BASIC FUEL PRICE IN SA CENTS PER LITRE

