

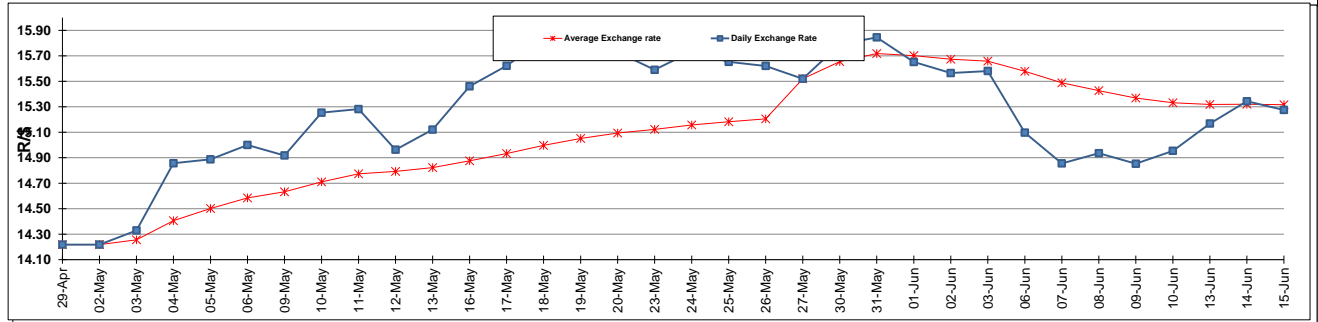
	PETROL 95 ULP	PETROL 93 ULP & LRP	DIESEL 0.05%	DIESEL 0.005%	ILL. PAR.
GAUTENG PUMP PRICE (SA c/l) AS FROM 01/06/2016	1 326.000	1 296.000	-	-	-
WHOLESALE PRICE (SA c/l) AS FROM 01/06/2016	-	-	1 128.870	1 133.270	717.628
SINGLE NATIONAL MAXIMUM RETAIL PRICE	-	-	-	-	922.000
BASIC FUEL PRICE - 16/06/2016 (SA c/l)	588.654	572.357	581.013	584.486	577.316
PRESS RELEASE CONTRIBUTION TO BFP 01/06/2016 - 16/06/2016 (SA c/l)	604.970	584.970	562.630	567.030	556.128
UNIT OVER/(UNDER) RECOVERY (SA c/l) - 16/06/2016	16.316	12.613	(18.383)	(17.456)	(21.188)
AVERAGE BASIC FUEL PRICE 27/05/2016 - 16/06/2016	616.864	599.144	605.677	609.845	600.748
AVERAGE UNIT OVER/(UNDER) RECOVERY 27/05/2016 - 16/06/2016	(22.294)	(24.574)	(58.247)	(58.015)	(57.020)

ANALYSIS MOVEMENT OF AVERAGE OVER/(UNDER) RECOVERY

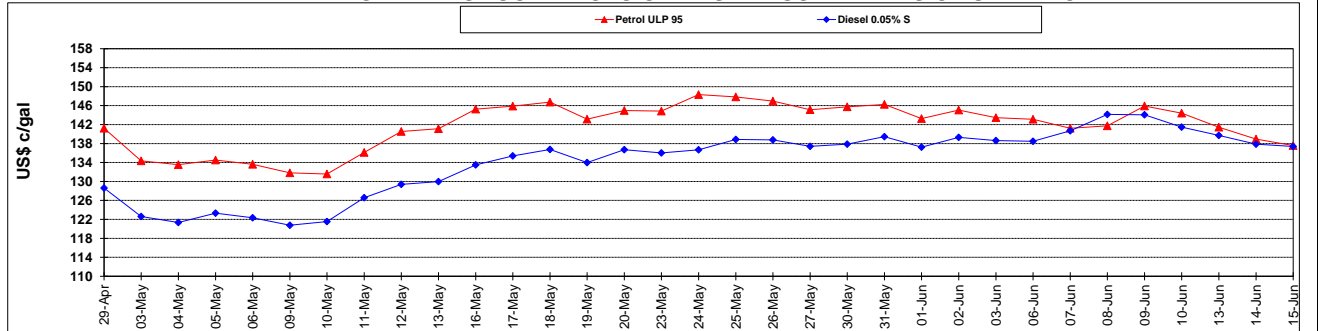
	PETROL 95	PETROL 93	DIESEL 0.05%	DIESEL 0.005%	ILL. PAR.
- MOVEMENT IN INTERNATIONAL PRODUCT PRICES	(34.648)	(36.573)	(70.377)	(70.229)	(69.052)
- MOVEMENT IN EXCHANGE RATE	12.354	11.999	12.130	12.214	12.032
AVERAGE UNIT OVER/(UNDER) RECOVERY 27/05/2016 - 16/06/2016	(22.294)	(24.574)	(58.247)	(58.015)	(57.020)

R/\$ EXCHANGE RATE - (R/\$ 15.2750 - 16/06/2016)

EXCHANGE RATE USED IN BASIC FUEL PRICE



INTERNATIONAL PRODUCT PRICES OF BASKET USED IN BASIC FUEL PRICE



BASIC FUEL PRICE IN SA CENTS PER LITRE

