

UPDATE OF THE BASIC FUEL PRICE

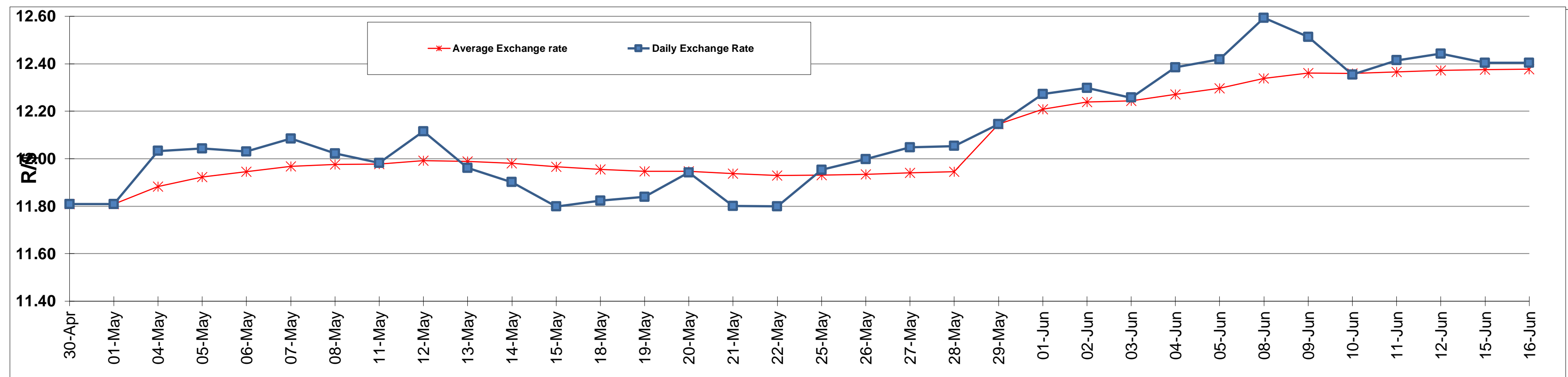
	PETROL 95 ULP	PETROL 93 ULP & LRP	DIESEL 0.05%	DIESEL 0.005%	ILL. PAR.
GAUTENG PUMP PRICE (SA c/l) AS FROM 03/06/2015	1,336.000	1,308.000	-	-	-
WHOLESALE PRICE (SA c/l) AS FROM 03/06/2015	-	-	1,166.790	1,170.190	780.828
SINGLE NATIONAL MAXIMUM RETAIL PRICE	-	-	-	-	1,006.000
BASIC FUEL PRICE - 16/06/2015 (SA c/l)	717.250	701.471	635.538	638.581	623.847
PRESS RELEASE CONTRIBUTION TO BFP 03/06/2015 - 16/06/2015 (SA c/l)	662.650	664.650	638.630	642.030	623.128
UNIT OVER/(UNDER) RECOVERY (SA c/l) - 16/06/2015	(54.600)	(36.821)	3.092	3.449	(0.719)
AVERAGE BASIC FUEL PRICE 29/05/2015 - 16/06/2015	702.512	687.721	642.191	644.942	626.034
AVERAGE UNIT OVER/(UNDER) RECOVERY 29/05/2015 - 16/06/2015	(50.708)	(38.533)	(14.869)	(13.527)	(12.598)

ANALYSIS MOVEMENT OF AVERAGE OVER/(UNDER) RECOVERY

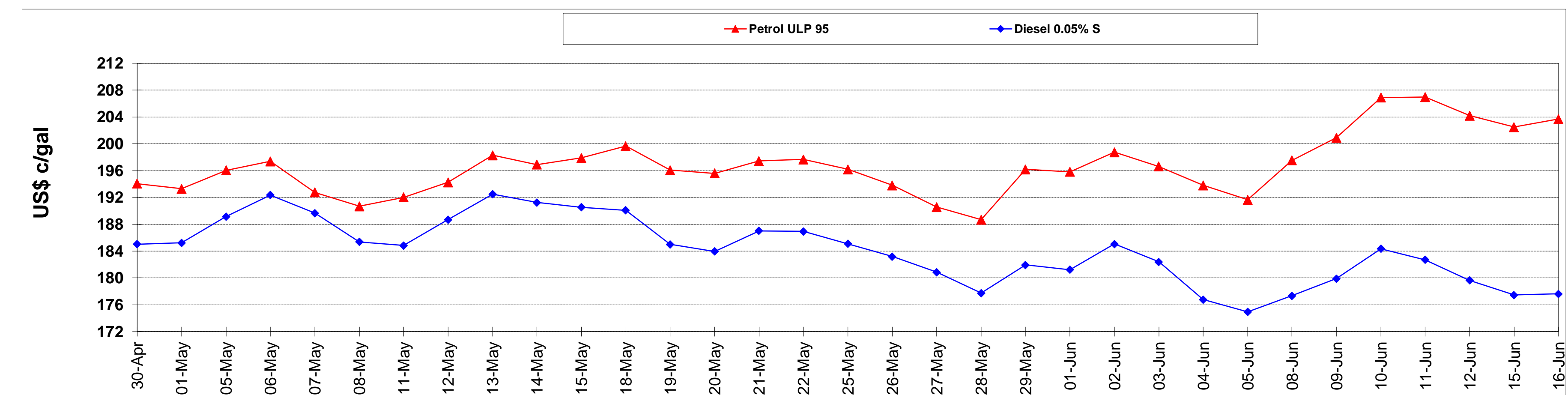
	PETROL 95	PETROL 93	DIESEL 0.05%	DIESEL 0.005%	ILL. PAR.
- MOVEMENT IN INTERNATIONAL PRODUCT PRICES	(26.194)	(14.535)	7.540	8.978	9.247
- MOVEMENT IN EXCHANGE RATE	(24.514)	(23.998)	(22.409)	(22.505)	(21.845)
AVERAGE UNIT OVER/(UNDER) RECOVERY 29/05/2015 - 16/06/2015	(50.708)	(38.533)	(14.869)	(13.527)	(12.598)

R/\$ EXCHANGE RATE - (R/\$ 12.4044 - 16/06/2015)

EXCHANGE RATE USED IN BASIC FUEL PRICE



INTERNATIONAL PRODUCT PRICES OF BASKET USED IN BASIC FUEL PRICE



BASIC FUEL PRICE IN SA CENTS PER LITRE

