

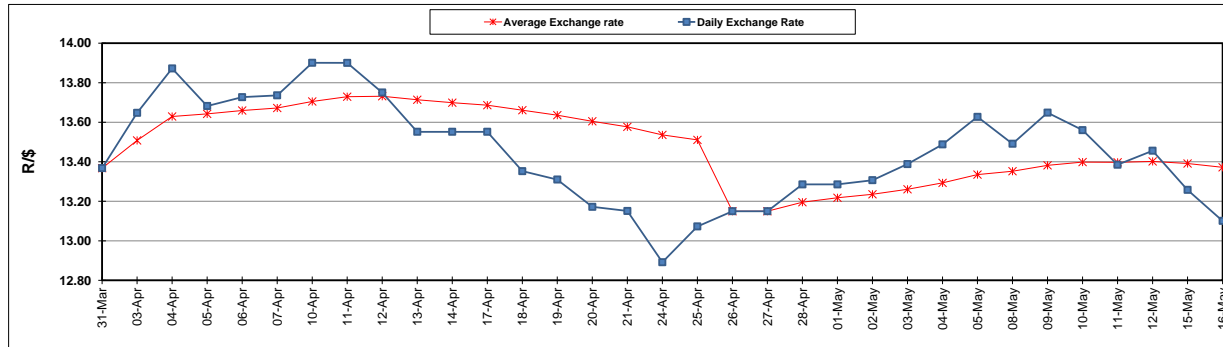
	PETROL 95 ULP	PETROL 93 ULP & LRP	DIESEL 0.05%	DIESEL 0.005%	ILL. PAR.
GAUTENG PUMP PRICE (SA c/l) AS FROM 03/05/2017	1 379.000	1 357.000	-	-	-
WHOLESALE PRICE (SA c/l) AS FROM 03/05/2017	-	-	1 180.330	1 184.730	736.088
SINGLE NATIONAL MAXIMUM RETAIL PRICE	-	-	-	-	947.000
BASIC FUEL PRICE - 16/05/2017 (SA c/l)	560.580	544.498	535.948	538.939	532.698
PRESS RELEASE CONTRIBUTION TO BFP 03/05/2017 - 16/05/2017 (SA c/l)	597.670	585.670	568.630	573.030	565.128
UNIT OVER/(UNDER) RECOVERY (SA c/l) - 16/05/2017	37.090	41.172	32.682	34.091	32.430
AVERAGE BASIC FUEL PRICE 26/04/2017 - 16/05/2017	560.454	543.960	537.232	540.772	531.208
AVERAGE UNIT OVER/(UNDER) RECOVERY 26/04/2017- 16/05/2017	20.882	25.377	21.398	21.591	22.587

ANALYSIS MOVEMENT OF AVERAGE OVER/(UNDER) RECOVERY

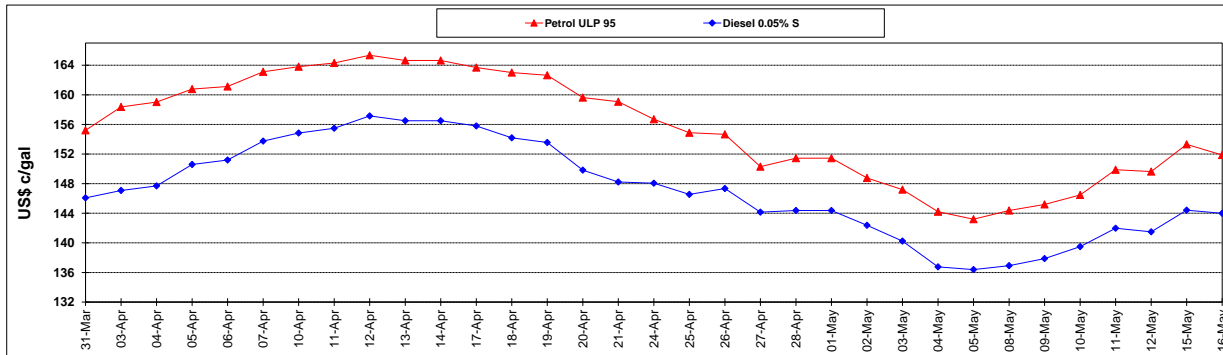
	PETROL 95	PETROL 93	DIESEL 0.05%	DIESEL 0.005%	ILL. PAR.
- MOVEMENT IN INTERNATIONAL PRODUCT PRICES	15.074	19.739	15.830	15.986	17.081
- MOVEMENT IN EXCHANGE RATE	5.809	5.638	5.568	5.605	5.506
AVERAGE UNIT OVER/(UNDER) RECOVERY 26/04/2017 - 16/05/2017	20.882	25.377	21.398	21.591	22.587

R/\$ EXCHANGE RATE - (R/\$ 13.1008 - 16/05/2017)

EXCHANGE RATE USED IN BASIC FUEL PRICE



INTERNATIONAL PRODUCT PRICES OF BASKET USED IN BASIC FUEL PRICE



BASIC FUEL PRICE IN SA CENTS PER LITRE

