

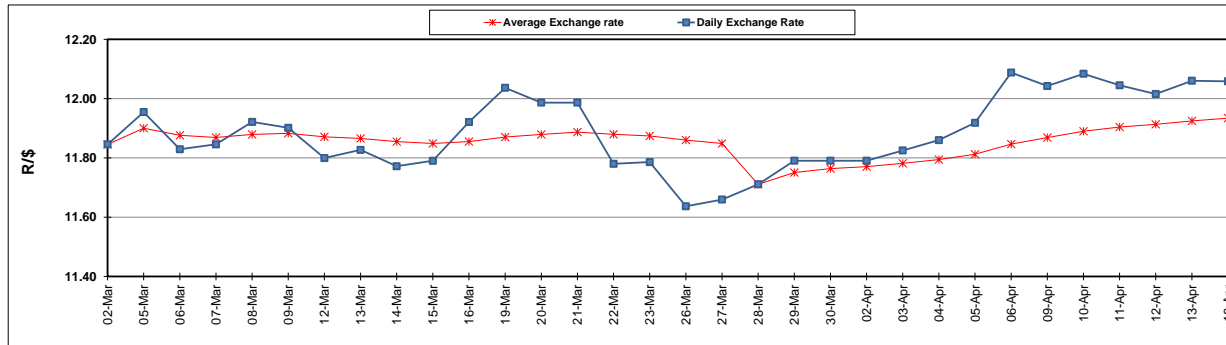
	PETROL 95 ULP	PETROL 93 ULP & LRP	DIESEL 0.05%	DIESEL 0.005%	ILL. PAR.
GAUTENG PUMP PRICE (SA c/l) AS FROM 07/03/2018	1 448.000	1 423.000	-	-	-
WHOLESALE PRICE (SA c/l) AS FROM 07/03/2018	-	-	1 274.830	1 280.230	793.088
SINGLE NATIONAL MAXIMUM RETAIL PRICE	-	-	-	-	1 026.000
BASIC FUEL PRICE - 16/04/2018 (SA c/l)	649.730	632.448	669.502	674.288	688.540
PRESS RELEASE CONTRIBUTION TO BFP 04/04/2018 - 16/04/2018 (SA c/l)	596.070	581.070	601.630	607.030	620.128
UNIT OVER/(UNDER) RECOVERY - 16/04/2018 (SA c/l)	(53.660)	(51.378)	(67.872)	(67.258)	(68.412)
AVERAGE BASIC FUEL PRICE 28/03/2018 - 16/04/2018	634.841	619.354	649.771	654.945	662.305
AVERAGE UNIT OVER/(UNDER) RECOVERY 28/03/2018 - 16/04/2018	(42.307)	(40.749)	(49.212)	(48.986)	(40.392)

### ANALYSIS MOVEMENT OF AVERAGE OVER/(UNDER) RECOVERY

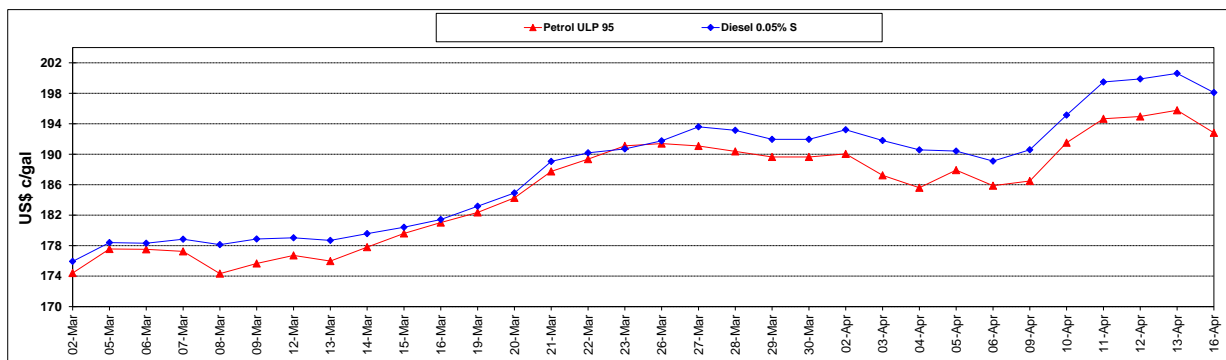
	PETROL 95	PETROL 93	DIESEL 0.05%	DIESEL 0.005%	ILL. PAR.
- MOVEMENT IN INTERNATIONAL PRODUCT PRICES	(37.769)	(36.321)	(44.568)	(44.305)	(35.657)
- MOVEMENT IN EXCHANGE RATE	(4.538)	(4.427)	(4.644)	(4.681)	(4.734)
AVERAGE UNIT OVER/(UNDER) RECOVERY 28/03/2018 - 16/04/2018	(42.307)	(40.749)	(49.212)	(48.986)	(40.392)

### R/\$ EXCHANGE RATE - (R/\$12.0585 - 16/04/2018)

#### EXCHANGE RATE USED IN BASIC FUEL PRICE



#### INTERNATIONAL PRODUCT PRICES OF BASKET USED IN BASIC FUEL PRICE



#### BASIC FUEL PRICE IN SA CENTS PER LITRE

