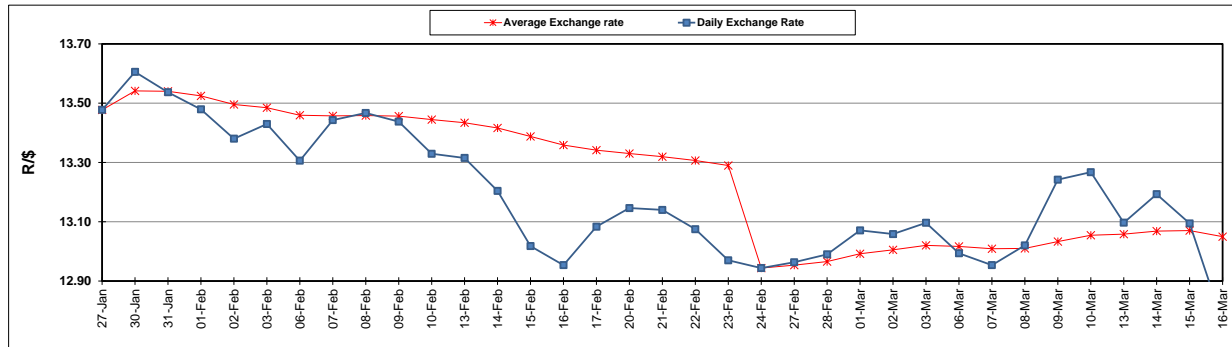


	PETROL 95 ULP	PETROL 93 ULP & LRP	DIESEL 0.05%	DIESEL 0.005%	ILL. PAR.
GAUTENG PUMP PRICE (SA c/l) AS FROM 01/03/2017	1 354.000	1 330.000	-	-	-
WHOLESALE PRICE (SA c/l) AS FROM 01/03/2017	-	-	1 160.830	1 163.230	750.588
SINGLE NATIONAL MAXIMUM RETAIL PRICE	-	-	-	-	966.000
BASIC FUEL PRICE - 16/03/2017 (SA c/l)	529.927	519.535	520.603	523.400	513.339
PRESS RELEASE CONTRIBUTION TO BFP 01/03/2017 - 16/03/2017 (SA c/l)	612.870	598.870	588.630	591.030	583.128
UNIT OVER/(UNDER) RECOVERY (SA c/l) - 16/03/2017	82.943	79.335	68.027	67.630	69.789
AVERAGE BASIC FUEL PRICE 24/02/2017 - 16/03/2017	559.835	548.093	556.757	559.677	548.791
AVERAGE UNIT OVER/(UNDER) RECOVERY 24/02/2017 - 16/03/2017	54.635	52.377	32.273	31.753	35.937

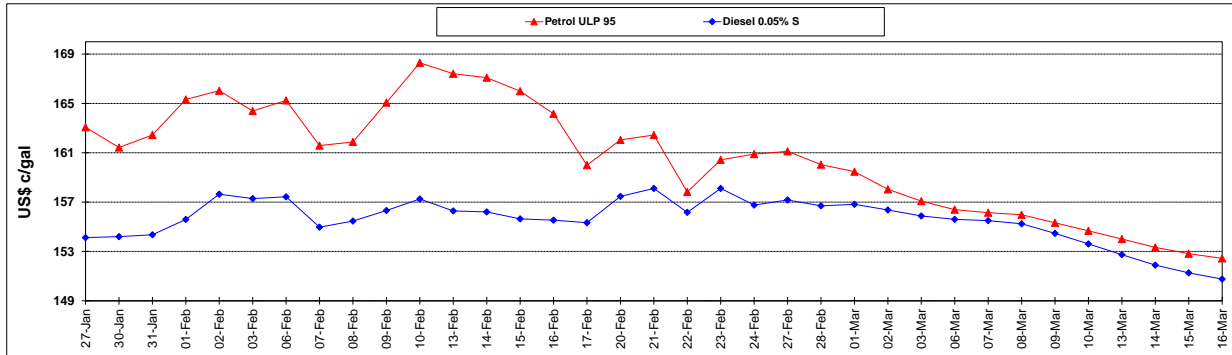
ANALYSIS MOVEMENT OF AVERAGE OVER/(UNDER) RECOVERY					
	PETROL 95	PETROL 93	DIESEL 0.05%	DIESEL 0.005%	ILL. PAR.
- MOVEMENT IN INTERNATIONAL PRODUCT PRICES	58.058	55.729	35.678	35.175	39.293
- MOVEMENT IN EXCHANGE RATE	(3.423)	(3.352)	(3.405)	(3.422)	(3.356)
AVERAGE UNIT OVER/(UNDER) RECOVERY 24/02/2017 - 16/03/2017	54.635	52.377	32.273	31.753	35.937

R/\$ EXCHANGE RATE - (R/\$ 12.7625 - 16/03/2017)

EXCHANGE RATE USED IN BASIC FUEL PRICE



INTERNATIONAL PRODUCT PRICES OF BASKET USED IN BASIC FUEL PRICE



BASIC FUEL PRICE IN SA CENTS PER LITRE

