

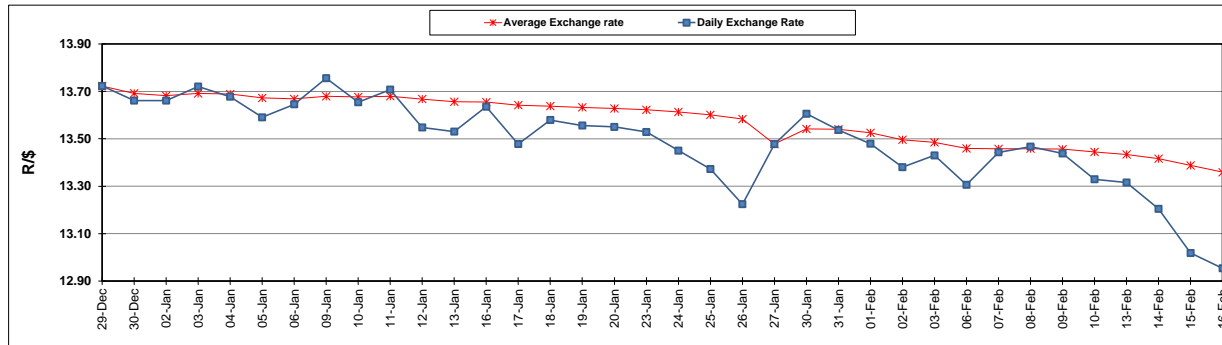
	PETROL 95 ULP	PETROL 93 ULP & LRP	DIESEL 0.05%	DIESEL 0.005%	ILL. PAR.
GAUTENG PUMP PRICE (SA c/l) AS FROM 01/02/2017	1 362.000	1 338.000	-	-	-
WHOLESALE PRICE (SA c/l) AS FROM 01/02/2017	-	-	1 162.830	1 165.230	758.588
SINGLE NATIONAL MAXIMUM RETAIL PRICE	-	-	-	-	976.000
BASIC FUEL PRICE - 16/02/2017 (SA c/l)	596.566	584.944	569.674	572.593	566.511
PRESS RELEASE CONTRIBUTION TO BFP 01/02/2017 - 16/02/2017 (SA c/l)	620.870	606.870	590.630	593.030	591.128
UNIT OVER/(UNDER) RECOVERY (SA c/l) - 16/02/2017	24.304	21.926	20.956	20.437	24.617
AVERAGE BASIC FUEL PRICE 27/01/2017 - 16/02/2017	615.787	600.769	587.616	589.997	581.832
AVERAGE UNIT OVER/(UNDER) RECOVERY 27/01/2017- 16/02/2017	(0.717)	0.301	(1.186)	(1.167)	5.896

ANALYSIS MOVEMENT OF AVERAGE OVER/(UNDER) RECOVERY

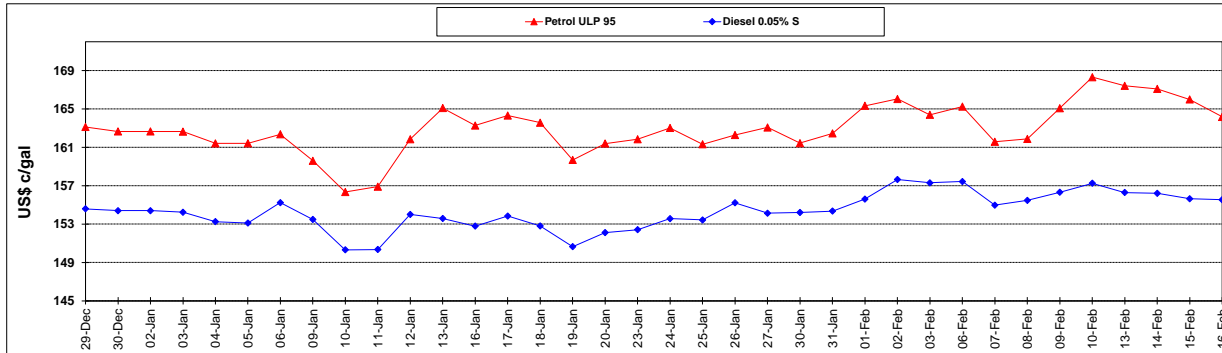
	PETROL 95	PETROL 93	DIESEL 0.05%	DIESEL 0.005%	ILL. PAR.
- MOVEMENT IN INTERNATIONAL PRODUCT PRICES	(11.052)	(9.782)	(11.048)	(11.069)	(3.869)
- MOVEMENT IN EXCHANGE RATE	10.335	10.083	9.862	9.902	9.765
AVERAGE UNIT OVER/(UNDER) RECOVERY 27/01/2017 - 16/02/2017	(0.717)	0.301	(1.186)	(1.167)	5.896

R/\$ EXCHANGE RATE - (R/\$ 12.9538- 16/02/2017)

EXCHANGE RATE USED IN BASIC FUEL PRICE



INTERNATIONAL PRODUCT PRICES OF BASKET USED IN BASIC FUEL PRICE



BASIC FUEL PRICE IN SA CENTS PER LITRE

