

UPDATE OF THE BASIC FUEL PRICE

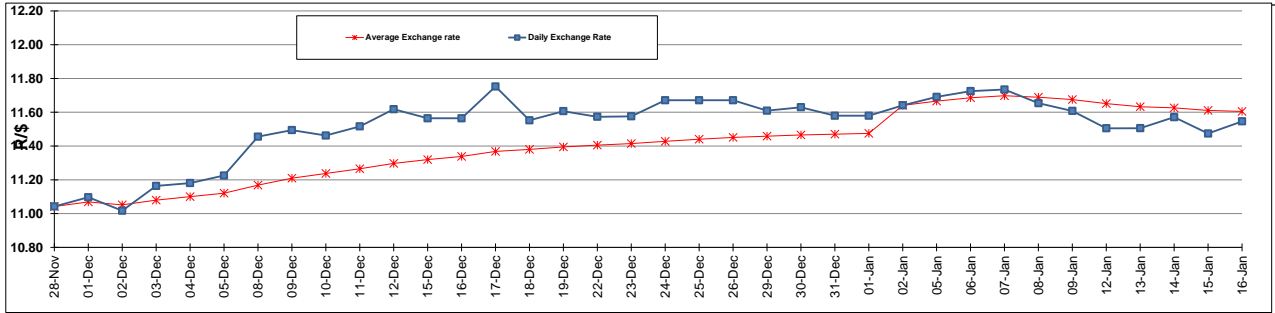
	PETROL 95 ULP	PETROL 93 ULP & LRP	DIESEL 0.05%	DIESEL 0.005%	ILL. PAR.
GAUTENG PUMP PRICE (SA c/l) AS FROM 07/01/2015	1,124.000	1,102.000	-	-	-
WHOLESALE PRICE (SA c/l) AS FROM 07/01/2015	-	-	1,028.090	1,032.490	747.928
SINGLE NATIONAL MAXIMUM RETAIL PRICE	-	-	-	-	969.000
BASIC FUEL PRICE - 16/01/2015 (SA c/l)	453.685	439.442	489.716	494.192	498.992
PRESS RELEASE CONTRIBUTION TO BFP 07/01/2015 - 16/01/2015 (SA c/l)	533.250	521.250	582.630	587.030	593.128
UNIT OVER/(UNDER) RECOVERY (SA c/l) - 16/01/2015	79.565	81.808	92.914	92.838	94.136
AVERAGE BASIC FUEL PRICE 02/01/2015 - 16/01/2015	462.729	450.317	504.800	508.870	512.017
AVERAGE UNIT OVER/(UNDER) RECOVERY 02/01/2015 - 16/01/2015	104.066	105.569	106.194	106.797	110.566

ANALYSIS MOVEMENT OF AVERAGE OVER/(UNDER) RECOVERY

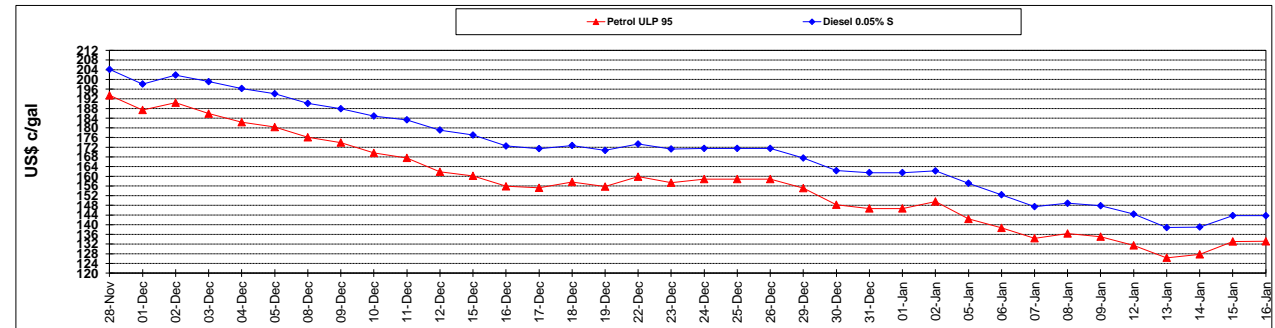
	PETROL 95	PETROL 93	DIESEL 0.05%	DIESEL 0.005%	ILL. PAR.
- MOVEMENT IN INTERNATIONAL PRODUCT PRICES	109.254	110.617	111.853	112.501	116.306
- MOVEMENT IN EXCHANGE RATE	(5.188)	(5.048)	(5.659)	(5.705)	(5.740)
AVERAGE UNIT OVER/(UNDER) RECOVERY 02/01/2015 - 16/01/2015	104.066	105.569	106.194	106.797	110.566

R/\$ EXCHANGE RATE - (R/\$ 11.5461 - 16/01/2015)

EXCHANGE RATE USED IN BASIC FUEL PRICE



INTERNATIONAL PRODUCT PRICES OF BASKET USED IN BASIC FUEL PRICE



BASIC FUEL PRICE IN SA CENTS PER LITRE

