

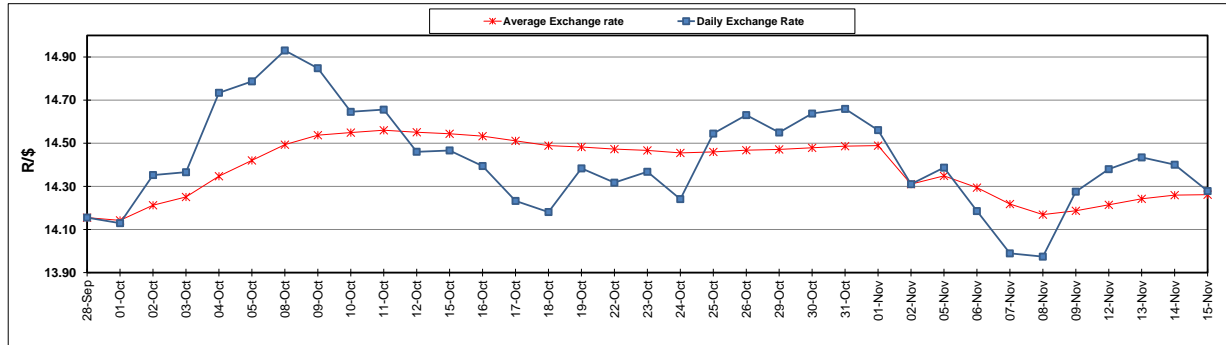
	PETROL 95 ULP	PETROL 93 ULP & LRP	DIESEL 0.05%	DIESEL 0.005%	ILL. PAR.
GAUTENG PUMP PRICE (SA c/l) AS FROM 07/11/2018	1 708.000	1 685.000	-	-	-
WHOLESALE PRICE (SA c/l) AS FROM 07/11/2018	-	-	1 612.750	1 620.150	1 085.088
SINGLE NATIONAL MAXIMUM RETAIL PRICE	-	-	-	-	1 409.000
BASIC FUEL PRICE - 15/11/2018 (SA c/l)	649.967	640.161	787.113	794.209	792.831
PRESS RELEASE CONTRIBUTION TO BFP 07/11/2018 - 15/11/2018 (SA c/l)	829.250	816.250	917.630	925.030	912.128
UNIT OVER/(UNDER) RECOVERY - 15/11/2018 (SA c/l)	179.283	176.089	130.517	130.821	119.297
AVERAGE BASIC FUEL PRICE 02/11/2018 - 15/11/2018	679.019	669.322	814.319	820.575	815.366
AVERAGE UNIT OVER/(UNDER) RECOVERY 02/11/2018 - 15/11/2018	156.807	153.505	95.511	95.755	88.362

ANALYSIS MOVEMENT OF AVERAGE OVER/(UNDER) RECOVERY

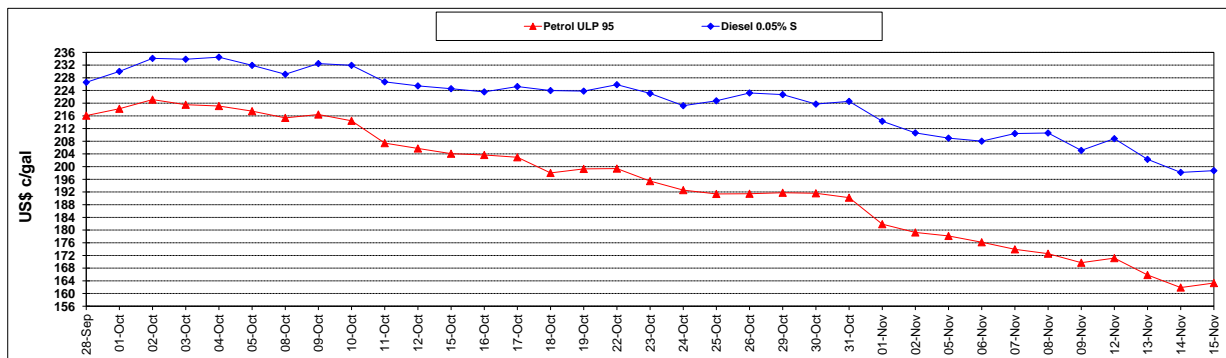
	PETROL 95	PETROL 93	DIESEL 0.05%	DIESEL 0.005%	ILL. PAR.
- MOVEMENT IN INTERNATIONAL PRODUCT PRICES	145.966	142.818	82.510	82.654	75.344
- MOVEMENT IN EXCHANGE RATE	10.841	10.686	13.001	13.101	13.018
AVERAGE UNIT OVER/(UNDER) RECOVERY 02/11/2018 - 15/11/2018	156.807	153.505	95.511	95.755	88.362

R/\$ EXCHANGE RATE - (R/\$14.2785 - 15/11/2018)

EXCHANGE RATE USED IN BASIC FUEL PRICE



INTERNATIONAL PRODUCT PRICES OF BASKET USED IN BASIC FUEL PRICE



BASIC FUEL PRICE IN SA CENTS PER LITRE

