

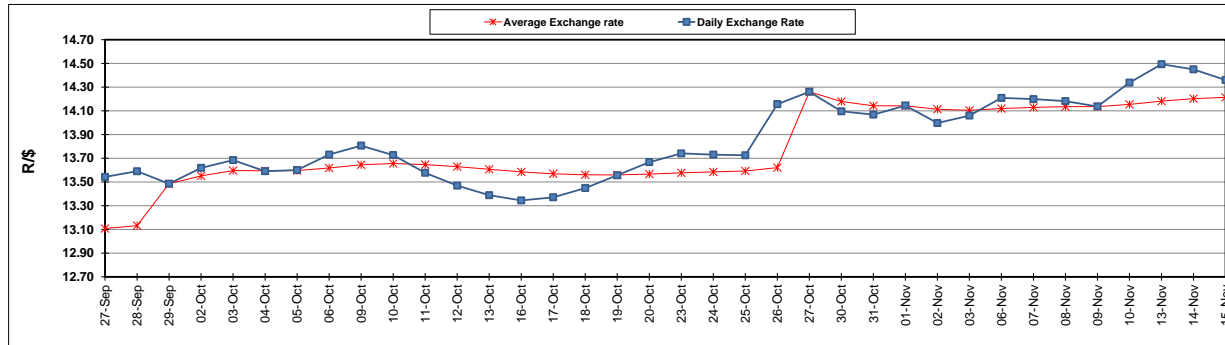
	PETROL 95 ULP	PETROL 93 ULP & LRP	DIESEL 0.05%	DIESEL 0.005%	ILL. PAR.
GAUTENG PUMP PRICE (SA c/l) AS FROM 01/11/2017	1 405.000	1 378.000	-	-	-
WHOLESALE PRICE (SA c/l) AS FROM 01/11/2017	-	-	1 235.330	1 244.730	792.088
SINGLE NATIONAL MAXIMUM RETAIL PRICE	-	-	-	-	1 021.000
BASIC FUEL PRICE -15/11/2017 (SA c/l)	691.253	677.152	692.299	696.810	699.789
PRESS RELEASE CONTRIBUTION TO BFP 01/11/2017 - 15/11/2017 (SA c/l)	619.070	602.070	623.630	633.030	621.128
UNIT OVER/(UNDER) RECOVERY (SA c/l) - 15/11/2017	(72.183)	(75.082)	(68.669)	(63.780)	(78.661)
AVERAGE BASIC FUEL PRICE 27/10/2017 - 15/11/2017	691.846	675.911	681.874	688.851	692.114
AVERAGE UNIT OVER/(UNDER) RECOVERY 27/10/2017 - 15/11/2017	(73.633)	(74.698)	(63.173)	(61.607)	(75.486)

### ANALYSIS MOVEMENT OF AVERAGE OVER/(UNDER) RECOVERY

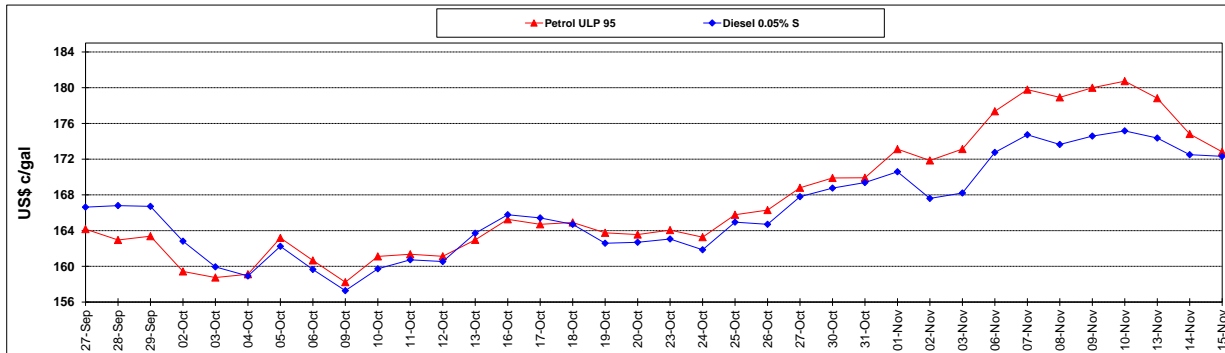
	PETROL 95	PETROL 93	DIESEL 0.05%	DIESEL 0.005%	ILL. PAR.
- MOVEMENT IN INTERNATIONAL PRODUCT PRICES	(44.774)	(46.504)	(34.730)	(32.873)	(46.616)
- MOVEMENT IN EXCHANGE RATE	(28.859)	(28.194)	(28.443)	(28.734)	(28.870)
AVERAGE UNIT OVER/(UNDER) RECOVERY 27/10/2017 - 15/11/2017	(73.633)	(74.698)	(63.173)	(61.607)	(75.486)

R/\$ EXCHANGE RATE - (R/\$ 14.3600 - 15/11/2017)

### EXCHANGE RATE USED IN BASIC FUEL PRICE



### INTERNATIONAL PRODUCT PRICES OF BASKET USED IN BASIC FUEL PRICE



### BASIC FUEL PRICE IN SA CENTS PER LITRE

