

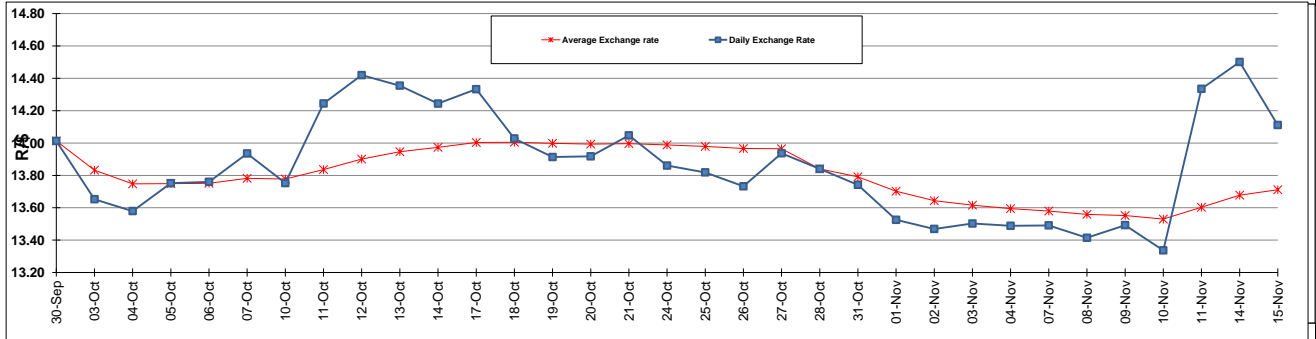
|  | PETROL 95 ULP | PETROL 93 ULP & LRP | DIESEL 0.05% | DIESEL 0.005% | ILL. PAR. |
|--|---------------|---------------------|--------------|---------------|-----------|
| GAUTENG PUMP PRICE (SA c/l) AS FROM 02/11/2016                     | 1 305.000     | 1 279.000           | -            | -             | -         |
| WHOLESALE PRICE (SA c/l) AS FROM 02/11/2016                        | -             | -                   | 1 134.870    | 1 138.270     | 726.628   |
| SINGLE NATIONAL MAXIMUM RETAIL PRICE                               | -             | -                   | -            | -             | 934.000   |
| BASIC FUEL PRICE - 15/11/2016 (SA c/l)                             | 519.700       | 505.429             | 511.594      | 515.601       | 511.784   |
| PRESS RELEASE CONTRIBUTION TO BFP 02/11/2016 - 15/11/2016 (SA c/l) | 583.970       | 567.970             | 568.630      | 572.030       | 565.128   |
| UNIT OVER/(UNDER) RECOVERY (SA c/l) - 15/11/2016                   | 64.270        | 62.541              | 57.036       | 56.429        | 53.344    |
| AVERAGE BASIC FUEL PRICE 28/10/2016 - 15/11/2016                   | 526.914       | 511.626             | 513.820      | 517.934       | 510.741   |
| AVERAGE UNIT OVER/(UNDER) RECOVERY 28/10/2016 - 15/11/2016         | 46.671        | 45.960              | 40.272       | 39.558        | 41.233    |

### ANALYSIS MOVEMENT OF AVERAGE OVER/(UNDER) RECOVERY

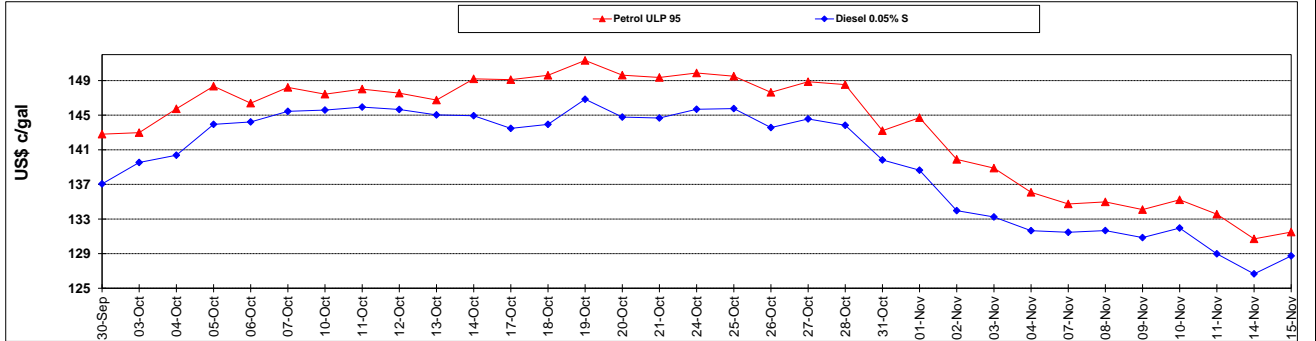
|  | PETROL 95 | PETROL 93 | DIESEL 0.05% | DIESEL 0.005% | ILL. PAR. |
|--|-----------|-----------|--------------|---------------|-----------|
| - MOVEMENT IN INTERNATIONAL PRODUCT PRICES                 | 36.937    | 36.507    | 30.780       | 29.990        | 31.798    |
| - MOVEMENT IN EXCHANGE RATE                                | 9.734     | 9.452     | 9.492        | 9.568         | 9.435     |
| AVERAGE UNIT OVER/(UNDER) RECOVERY 28/10/2016 - 15/11/2016 | 46.671    | 45.960    | 40.272       | 39.558        | 41.233    |

R/\$ EXCHANGE RATE - (R/\$ 14.1110 - 15/11/2016)

### EXCHANGE RATE USED IN BASIC FUEL PRICE



### INTERNATIONAL PRODUCT PRICES OF BASKET USED IN BASIC FUEL PRICE



### BASIC FUEL PRICE IN SA CENTS PER LITRE

