

UPDATE OF THE BASIC FUEL PRICE

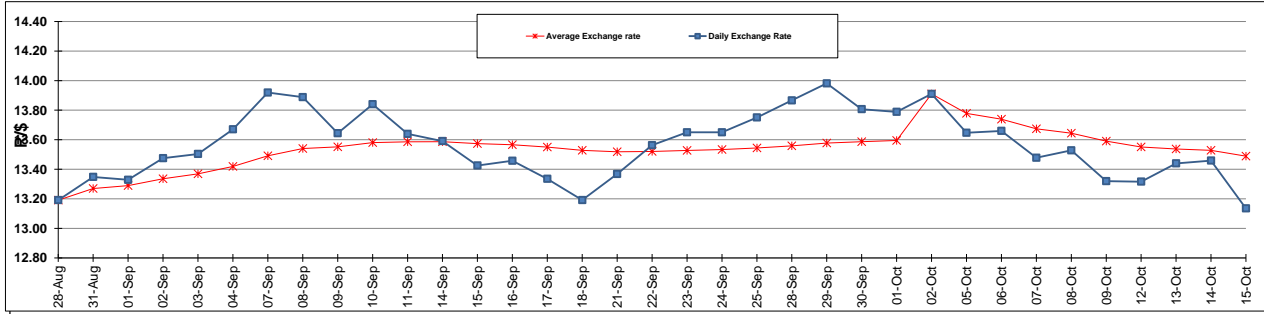
	PETROL 95 ULP	PETROL 93 ULP & LRP	DIESEL 0.05%	DIESEL 0.005%	ILL. PAR.
GAUTENG PUMP PRICE (SA c/l) AS FROM 07/10/2015	1,261.000	1,230.000	-	-	-
WHOLESALE PRICE (SA c/l) AS FROM 07/10/2015	-	-	1,093.970	1,100.370	711.828
SINGLE NATIONAL MAXIMUM RETAIL PRICE	-	-	-	-	914.000
BASIC FUEL PRICE - 15/10/2015 (SA c/l)	543.109	527.446	526.696	532.479	523.677
PRESS RELEASE CONTRIBUTION TO BFP 07/10/2015 - 15/10/2015 (SA c/l)	582.870	561.870	565.630	572.030	554.128
UNIT OVER/(UNDER) RECOVERY (SA c/l) - 15/10/2015	39.761	34.424	38.934	39.551	30.451
AVERAGE BASIC FUEL PRICE 02/10/2015 - 15/10/2015	577.256	561.079	561.274	566.601	553.314
AVERAGE UNIT OVER/(UNDER) RECOVERY 02/10/2015 - 15/10/2015	4.414	1.391	(11.544)	(9.871)	(14.186)

ANALYSIS MOVEMENT OF AVERAGE OVER/(UNDER) RECOVERY

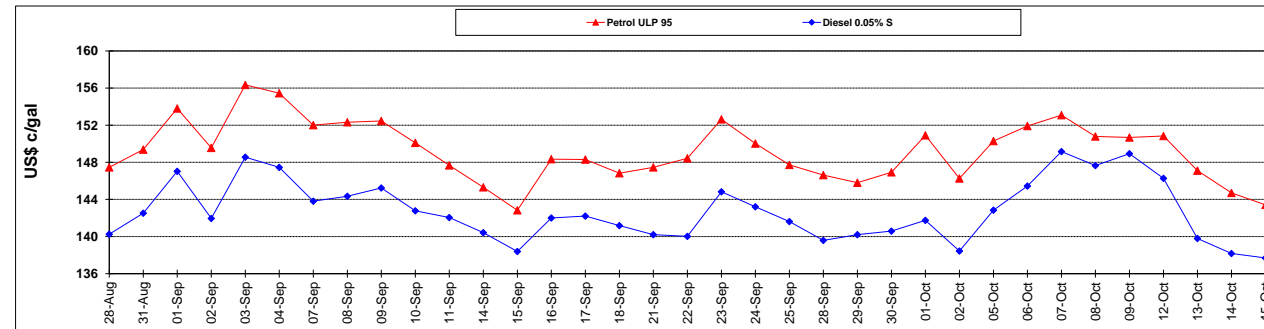
	PETROL 95	PETROL 93	DIESEL 0.05%	DIESEL 0.005%	ILL. PAR.
- MOVEMENT IN INTERNATIONAL PRODUCT PRICES	(0.109)	(3.006)	(15.942)	(14.311)	(18.522)
- MOVEMENT IN EXCHANGE RATE	4.523	4.397	4.398	4.440	4.336
AVERAGE UNIT OVER/(UNDER) RECOVERY 02/10/2015 - 15/10/2015	4.414	1.391	(11.544)	(9.871)	(14.186)

R/\$ EXCHANGE RATE - (R/\$ 13.1349 - 15/10/2015)

EXCHANGE RATE USED IN BASIC FUEL PRICE



INTERNATIONAL PRODUCT PRICES OF BASKET USED IN BASIC FUEL PRICE



BASIC FUEL PRICE IN SA CENTS PER LITRE

