

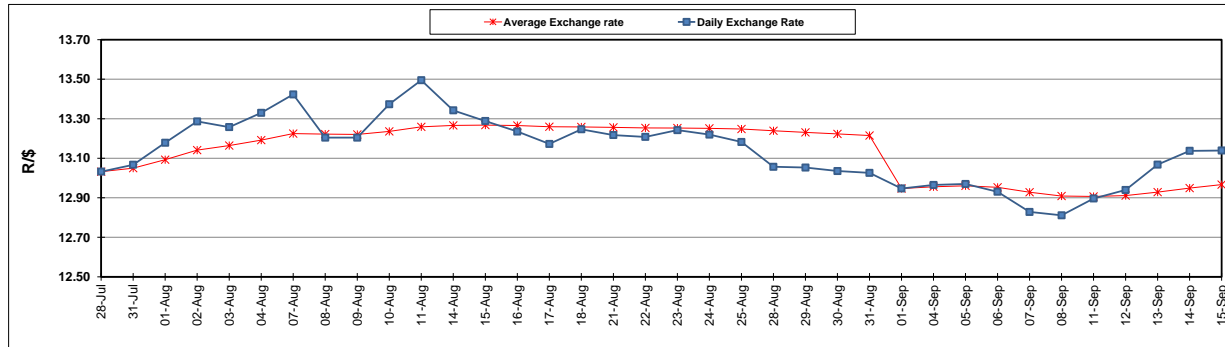
	PETROL 95 ULP	PETROL 93 ULP & LRP	DIESEL 0.05%	DIESEL 0.005%	ILL. PAR.
GAUTENG PUMP PRICE (SA c/l) AS FROM 06/09/2017	1 372.000	1 349.000	-	-	-
WHOLESALE PRICE (SA c/l) AS FROM 06/09/2017	-	-	1 170.330	1 175.730	732.088
SINGLE NATIONAL MAXIMUM RETAIL PRICE	-	-	-	-	941.000
BASIC FUEL PRICE - 15/09/2017 (SA c/l)	609.088	591.250	598.208	601.553	591.975
PRESS RELEASE CONTRIBUTION TO BFP 06/09/2017 - 15/09/2017 (SA c/l)	586.070	573.070	558.630	564.030	561.128
UNIT OVER/(UNDER) RECOVERY (SA c/l) - 15/09/2017	(23.018)	(18.180)	(39.578)	(37.523)	(30.847)
AVERAGE BASIC FUEL PRICE 01/09/2017 - 15/09/2017	603.016	586.124	579.919	585.242	576.531
AVERAGE UNIT OVER/(UNDER) RECOVERY 01/09/2017 - 15/09/2017	(33.964)	(30.072)	(33.289)	(33.212)	(28.766)

### ANALYSIS MOVEMENT OF AVERAGE OVER/(UNDER) RECOVERY

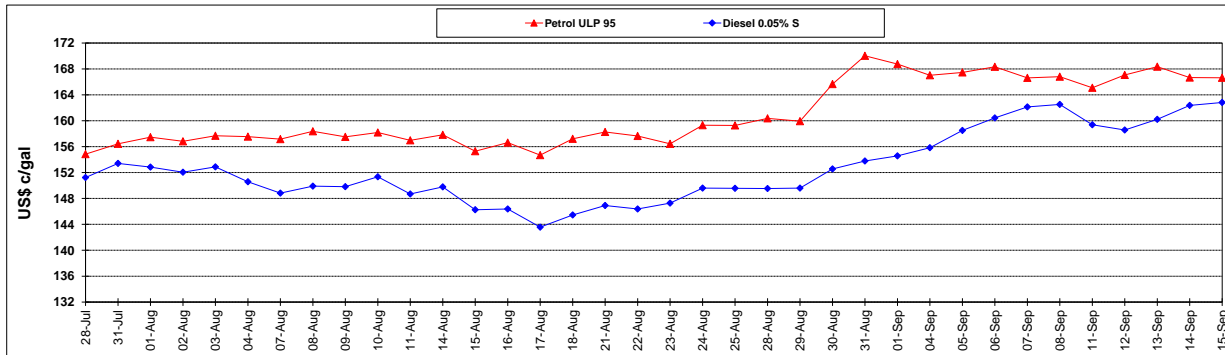
	PETROL 95	PETROL 93	DIESEL 0.05%	DIESEL 0.005%	ILL. PAR.
- MOVEMENT IN INTERNATIONAL PRODUCT PRICES	(45.525)	(41.309)	(44.407)	(44.432)	(39.820)
- MOVEMENT IN EXCHANGE RATE	11.561	11.237	11.118	11.220	11.053
AVERAGE UNIT OVER/(UNDER) RECOVERY 01/09/2017 - 15/09/2017	(33.964)	(30.072)	(33.289)	(33.212)	(28.766)

**R/\$ EXCHANGE RATE - (R/\$13.1393 - 15/09/2017)**

### EXCHANGE RATE USED IN BASIC FUEL PRICE



### INTERNATIONAL PRODUCT PRICES OF BASKET USED IN BASIC FUEL PRICE



### BASIC FUEL PRICE IN SA CENTS PER LITRE

