

UPDATE OF THE BASIC FUEL PRICE

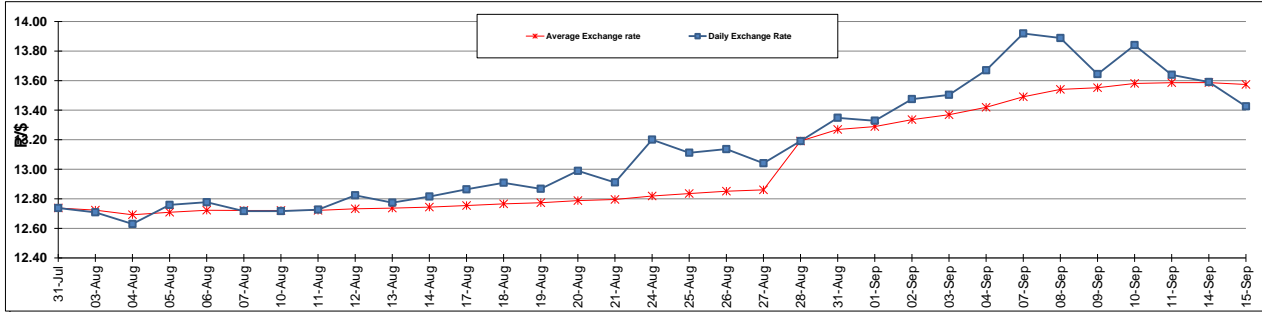
	PETROL 95 ULP	PETROL 93 ULP & LRP	DIESEL 0.05%	DIESEL 0.005%	ILL. PAR.
GAUTENG PUMP PRICE (SA c/l) AS FROM 02/09/2015	1,257.000	1,232.000	-	-	-
WHOLESALE PRICE (SA c/l) AS FROM 02/09/2015	-	-	1,040.970	1,049.370	661.828
SINGLE NATIONAL MAXIMUM RETAIL PRICE	-	-	-	-	847.000
BASIC FUEL PRICE - 15/09/2015 (SA c/l)	562.446	544.974	551.013	557.209	540.040
PRESS RELEASE CONTRIBUTION TO BFP 02/09/2015 - 15/09/2015 (SA c/l)	578.870	563.870	512.630	521.030	504.128
UNIT OVER/(UNDER) RECOVERY (SA c/l) - 15/09/2015	16.424	18.896	(38.383)	(36.179)	(35.912)
AVERAGE BASIC FUEL PRICE 28/08/2015 - 15/09/2015	595.541	573.096	575.056	581.867	562.941
AVERAGE UNIT OVER/(UNDER) RECOVERY 28/08/2015 - 15/09/2015	0.314	7.759	(49.965)	(49.067)	(46.120)

ANALYSIS MOVEMENT OF AVERAGE OVER/(UNDER) RECOVERY

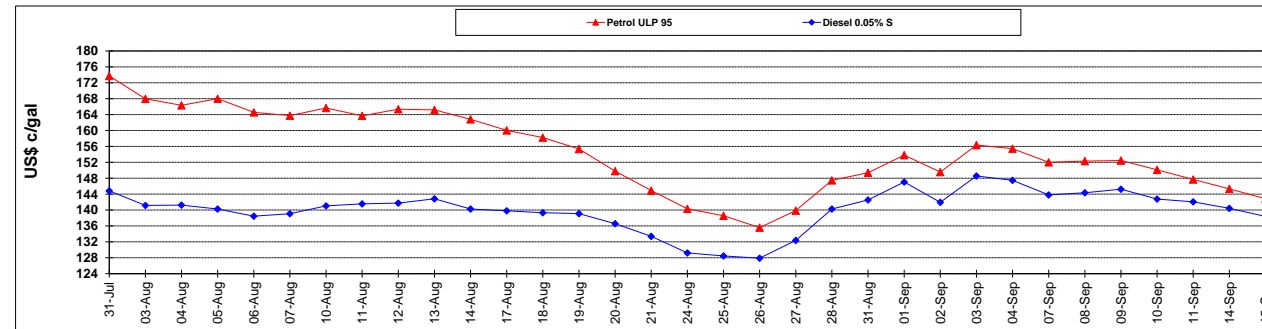
	PETROL 95	PETROL 93	DIESEL 0.05%	DIESEL 0.005%	ILL. PAR.
- MOVEMENT IN INTERNATIONAL PRODUCT PRICES	31.604	37.870	(19.750)	(18.496)	(16.543)
- MOVEMENT IN EXCHANGE RATE	(31.290)	(30.111)	(30.214)	(30.572)	(29.578)
AVERAGE UNIT OVER/(UNDER) RECOVERY 28/08/2015 - 15/09/2015	0.314	7.759	(49.965)	(49.067)	(46.120)

R/\$ EXCHANGE RATE - (R/\$ 13.4255 - 15/09/2015)

EXCHANGE RATE USED IN BASIC FUEL PRICE



INTERNATIONAL PRODUCT PRICES OF BASKET USED IN BASIC FUEL PRICE



BASIC FUEL PRICE IN SA CENTS PER LITRE

