

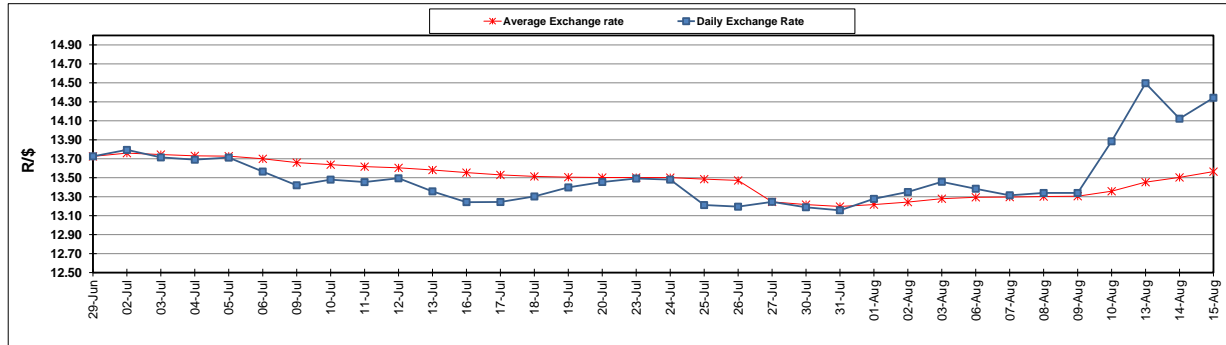
	PETROL 95 ULP	PETROL 93 ULP & LRP	DIESEL 0.05%	DIESEL 0.005%	ILL. PAR.
GAUTENG PUMP PRICE (SA c/l) AS FROM 04/08/2018	1 603.000	1 582.000	-	-	-
WHOLESALE PRICE (SA c/l) AS FROM 04/08/2018	-	-	1 440.830	1 445.230	953.088
SINGLE NATIONAL MAXIMUM RETAIL PRICE	-	-	-	-	1 233.000
BASIC FUEL PRICE - 15/08/2018 (SA c/l)	795.665	779.049	803.639	808.723	800.984
PRESS RELEASE CONTRIBUTION TO BFP 01/08/2018 - 15/08/2018 (SA c/l)	751.070	739.070	767.630	772.030	780.128
UNIT OVER/(UNDER) RECOVERY - 15/08/2018 (SA c/l)	(44.595)	(39.979)	(36.009)	(36.693)	(20.856)
AVERAGE BASIC FUEL PRICE 27/07/2018 - 15/08/2018	755.589	741.929	770.625	775.005	775.240
AVERAGE UNIT OVER/(UNDER) RECOVERY 27/06/2018 - 15/08/2018	(4.734)	(3.074)	(2.138)	(2.118)	4.031

ANALYSIS MOVEMENT OF AVERAGE OVER/(UNDER) RECOVERY

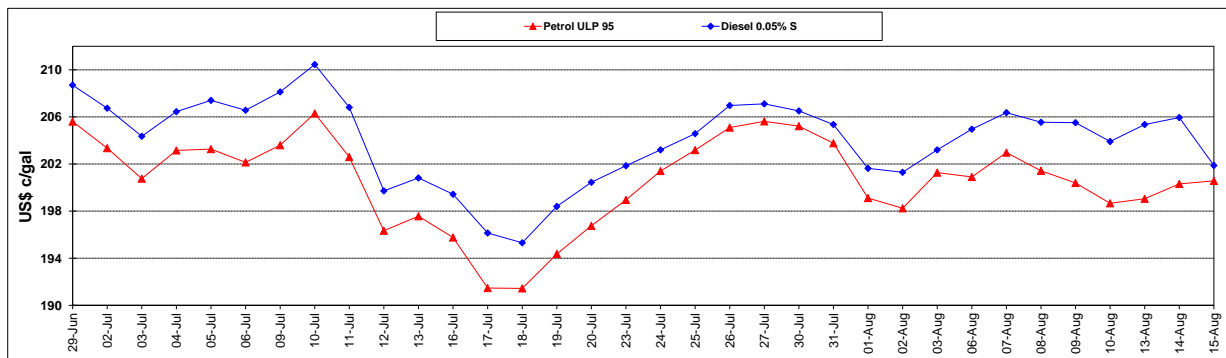
	PETROL 95	PETROL 93	DIESEL 0.05%	DIESEL 0.005%	ILL. PAR.
- MOVEMENT IN INTERNATIONAL PRODUCT PRICES	0.442	2.008	3.140	3.190	9.341
- MOVEMENT IN EXCHANGE RATE	(5.175)	(5.081)	(5.278)	(5.308)	(5.310)
AVERAGE UNIT OVER/(UNDER) RECOVERY 27/07/2018 - 15/08/2018	(4.734)	(3.074)	(2.138)	(2.118)	4.031

R/\$ EXCHANGE RATE - (R/\$14.3423 - 15/08/2018)

EXCHANGE RATE USED IN BASIC FUEL PRICE



INTERNATIONAL PRODUCT PRICES OF BASKET USED IN BASIC FUEL PRICE



BASIC FUEL PRICE IN SA CENTS PER LITRE

