

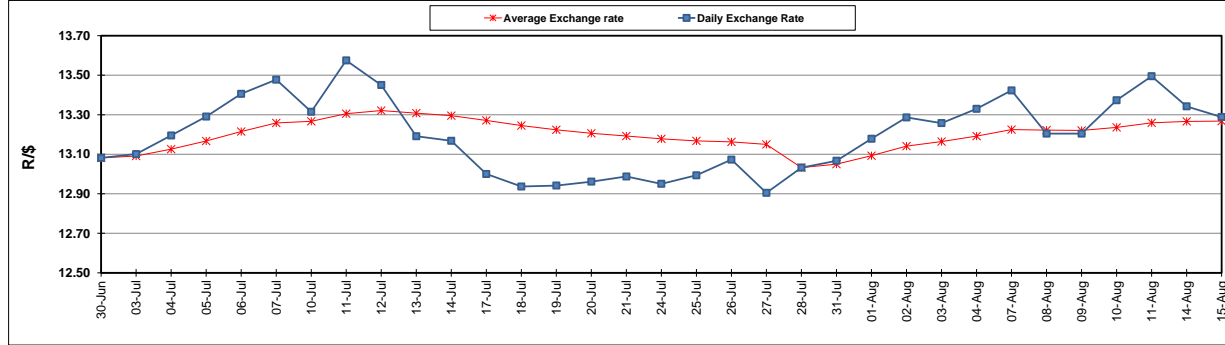
	PETROL 95 ULP	PETROL 93 ULP & LRP	DIESEL 0.05%	DIESEL 0.005%	ILL. PAR.
GAUTENG PUMP PRICE (SA c/l) AS FROM 02/08/2017	1 305.000	1 282.000	-	-	-
WHOLESALE PRICE (SA c/l) AS FROM 02/08/2017	-	-	1 126.330	1 131.730	683.088
SINGLE NATIONAL MAXIMUM RETAIL PRICE	-	-	-	-	876.000
BASIC FUEL PRICE - 15/08/2017 (SA c/l)	576.200	559.339	546.783	552.703	552.232
PRESS RELEASE CONTRIBUTION TO BFP 02/08/2017 - 15/08/2017 (SA c/l)	523.670	510.670	514.630	520.030	512.128
UNIT OVER/(UNDER) RECOVERY (SA c/l) - 15/08/2017	(52.530)	(48.669)	(32.153)	(32.673)	(40.104)
AVERAGE BASIC FUEL PRICE 28/07/2017 - 15/08/2017	581.616	565.826	561.110	567.633	562.303
AVERAGE UNIT OVER/(UNDER) RECOVERY 28/07/2017- 15/08/2017	(62.331)	(59.541)	(53.172)	(54.526)	(56.175)

### ANALYSIS MOVEMENT OF AVERAGE OVER/(UNDER) RECOVERY

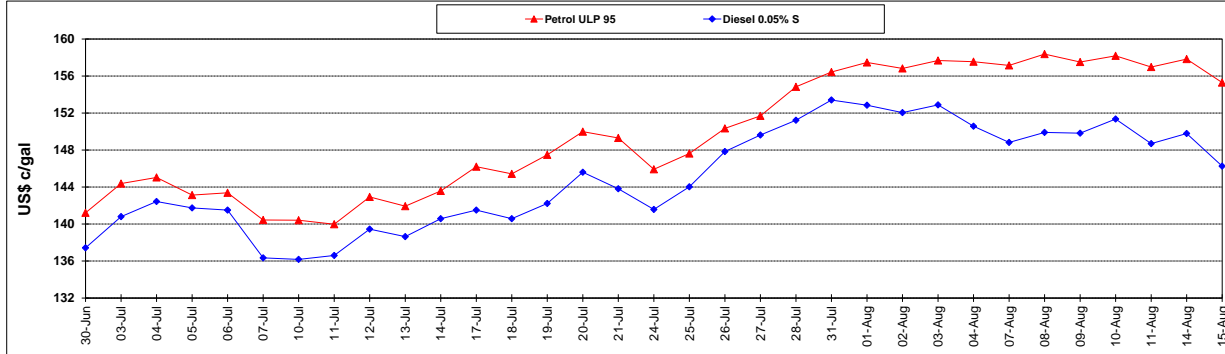
	PETROL 95	PETROL 93	DIESEL 0.05%	DIESEL 0.005%	ILL. PAR.
- MOVEMENT IN INTERNATIONAL PRODUCT PRICES	(57.163)	(54.513)	(48.186)	(49.482)	(51.178)
- MOVEMENT IN EXCHANGE RATE	(5.168)	(5.028)	(4.986)	(5.044)	(4.997)
AVERAGE UNIT OVER/(UNDER) RECOVERY 28/07/2017 - 15/08/2017	(62.331)	(59.541)	(53.172)	(54.526)	(56.175)

**R/\$ EXCHANGE RATE - (R/\$ 13.2883 - 15/08/2017)**

### EXCHANGE RATE USED IN BASIC FUEL PRICE



### INTERNATIONAL PRODUCT PRICES OF BASKET USED IN BASIC FUEL PRICE



### BASIC FUEL PRICE IN SA CENTS PER LITRE

