

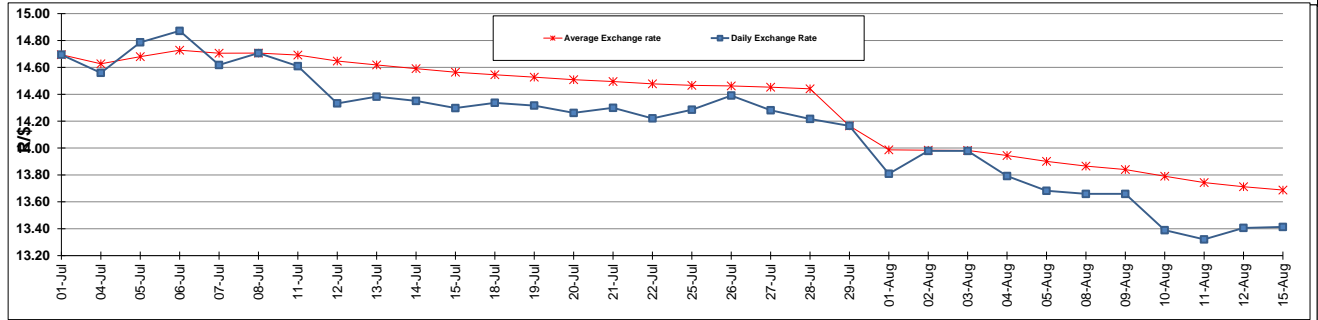
	PETROL 95 ULP	PETROL 93 ULP & LRP	DIESEL 0.05%	DIESEL 0.005%	ILL. PAR.
GAUTENG PUMP PRICE (SA c/l) AS FROM 03/08/2016	1 235.000	1 208.000	-	-	-
WHOLESALE PRICE (SA c/l) AS FROM 03/08/2016	-	-	1 096.870	1 101.270	694.628
SINGLE NATIONAL MAXIMUM RETAIL PRICE	-	-	-	-	891.000
BASIC FUEL PRICE - 15/08/2016 (SA c/l)	499.004	482.728	492.328	495.689	491.911
PRESS RELEASE CONTRIBUTION TO BFP 03/08/2116 - 15/08/2016 (SA c/l)	513.970	496.970	530.630	535.030	533.128
UNIT OVER/(UNDER) RECOVERY (SA c/l) - 15/08/2016	14.966	14.242	38.302	39.341	41.217
AVERAGE BASIC FUEL PRICE 29/07/2116 - 15/08/2016	473.829	459.621	460.277	463.727	461.879
AVERAGE UNIT OVER/(UNDER) RECOVERY 29/07/2016 - 15/08/2016	64.891	62.099	88.853	89.553	87.749

ANALYSIS MOVEMENT OF AVERAGE OVER/(UNDER) RECOVERY

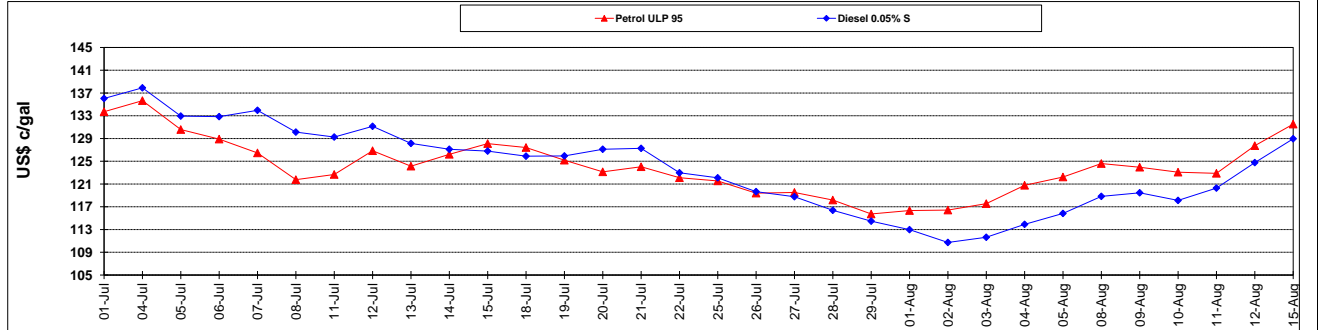
	PETROL 95	PETROL 93	DIESEL 0.05%	DIESEL 0.005%	ILL. PAR.
- MOVEMENT IN INTERNATIONAL PRODUCT PRICES	38.828	36.817	63.535	64.046	62.343
- MOVEMENT IN EXCHANGE RATE	26.063	25.282	25.318	25.507	25.406
AVERAGE UNIT OVER/(UNDER) RECOVERY 29/07/2016 - 15/08/2016	64.891	62.099	88.853	89.553	87.749

R/\$ EXCHANGE RATE - (R/\$ 13.4135 - 15/08/2016)

EXCHANGE RATE USED IN BASIC FUEL PRICE



INTERNATIONAL PRODUCT PRICES OF BASKET USED IN BASIC FUEL PRICE



BASIC FUEL PRICE IN SA CENTS PER LITRE

