

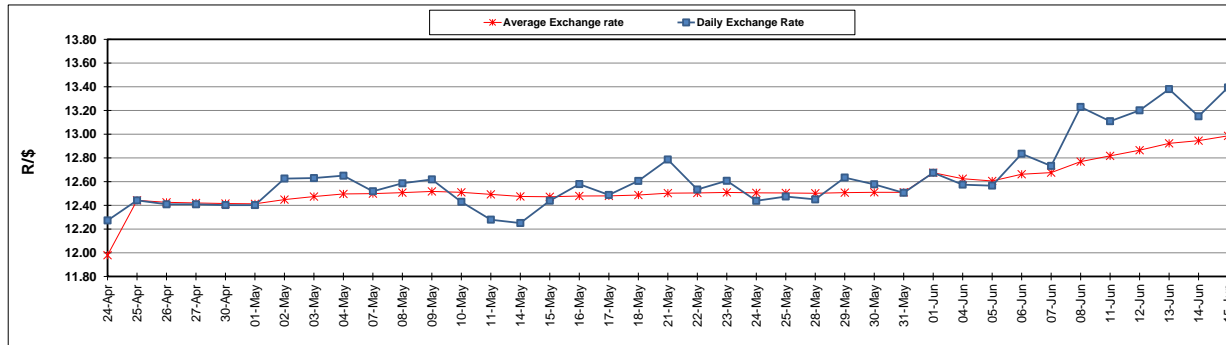
	PETROL 95 ULP	PETROL 93 ULP & LRP	DIESEL 0.05%	DIESEL 0.005%	ILL. PAR.
GAUTENG PUMP PRICE (SA c/l) AS FROM 06/06/2018	1 579.000	1 554.000	-	-	-
WHOLESALE PRICE (SA c/l) AS FROM 06/06/2018	-	-	1 418.830	1 425.230	927.088
SINGLE NATIONAL MAXIMUM RETAIL PRICE	-	-	-	-	1 198.000
BASIC FUEL PRICE - 15/06/2018 (SA c/l)	741.470	730.052	761.333	764.986	764.308
PRESS RELEASE CONTRIBUTION TO BFP 06/06/2018 - 15/06/2018 (SA c/l)	727.070	712.070	745.630	752.030	754.128
UNIT OVER/(UNDER) RECOVERY - 15/06/2018 (SA c/l)	(14.400)	(17.982)	(15.703)	(12.956)	(10.180)
AVERAGE BASIC FUEL PRICE 01/06/2018 - 15/06/2018	732.618	720.665	750.929	754.970	753.000
AVERAGE UNIT OVER/(UNDER) RECOVERY 01/06/2018 - 15/06/2018	(27.912)	(30.959)	(28.481)	(26.667)	(21.236)

ANALYSIS MOVEMENT OF AVERAGE OVER/(UNDER) RECOVERY

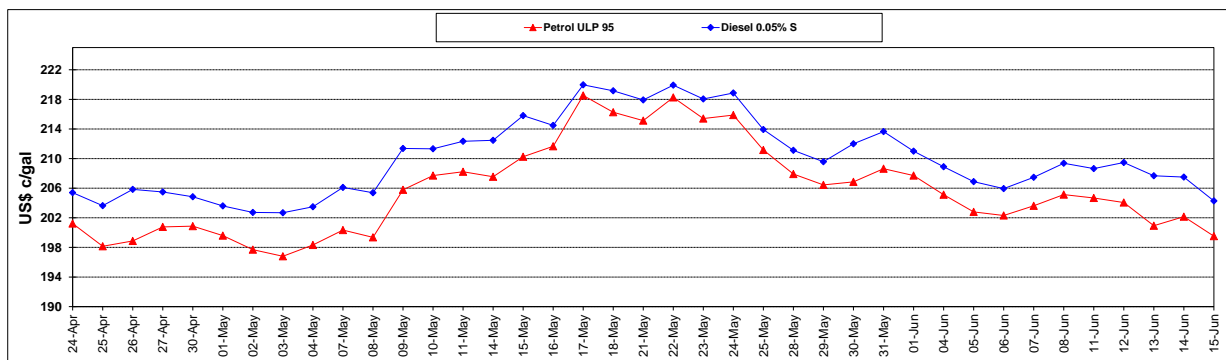
	PETROL 95	PETROL 93	DIESEL 0.05%	DIESEL 0.005%	ILL. PAR.
- MOVEMENT IN INTERNATIONAL PRODUCT PRICES	(1.041)	(4.527)	(0.939)	1.023	6.382
- MOVEMENT IN EXCHANGE RATE	(26.871)	(26.432)	(27.542)	(27.690)	(27.618)
AVERAGE UNIT OVER/(UNDER) RECOVERY 01/06/2018 - 15/06/2018	(27.912)	(30.959)	(28.481)	(26.667)	(21.236)

R/\$ EXCHANGE RATE - (R/\$13.3943 - 15/06/2018)

EXCHANGE RATE USED IN BASIC FUEL PRICE



INTERNATIONAL PRODUCT PRICES OF BASKET USED IN BASIC FUEL PRICE



BASIC FUEL PRICE IN SA CENTS PER LITRE

