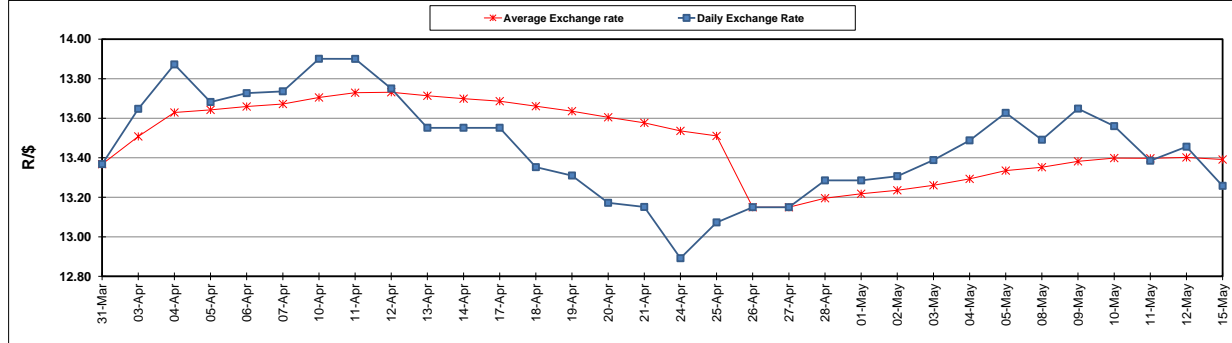


	PETROL 95 ULP	PETROL 93 ULP & LRP	DIESEL 0.05%	DIESEL 0.005%	ILL. PAR.
GAUTENG PUMP PRICE (SA c/l) AS FROM 03/05/2017	1 379.000	1 357.000	-	-	-
WHOLESALE PRICE (SA c/l) AS FROM 03/05/2017	-	-	1 180.330	1 184.730	736.088
SINGLE NATIONAL MAXIMUM RETAIL PRICE	-	-	-	-	947.000
BASIC FUEL PRICE - 15/05/2017 (SA c/l)	572.254	555.993	543.762	547.207	537.917
PRESS RELEASE CONTRIBUTION TO BFP 03/05/2017 - 15/05/2017 (SA c/l)	597.670	585.670	568.630	573.030	565.128
UNIT OVER/(UNDER) RECOVERY (SA c/l) - 15/05/2017	25.416	29.677	24.868	25.823	27.211
AVERAGE BASIC FUEL PRICE 26/04/2017 - 15/05/2017	560.445	543.921	537.324	540.903	531.101
AVERAGE UNIT OVER/(UNDER) RECOVERY 26/04/2017- 15/05/2017	19.725	24.249	20.592	20.698	21.884

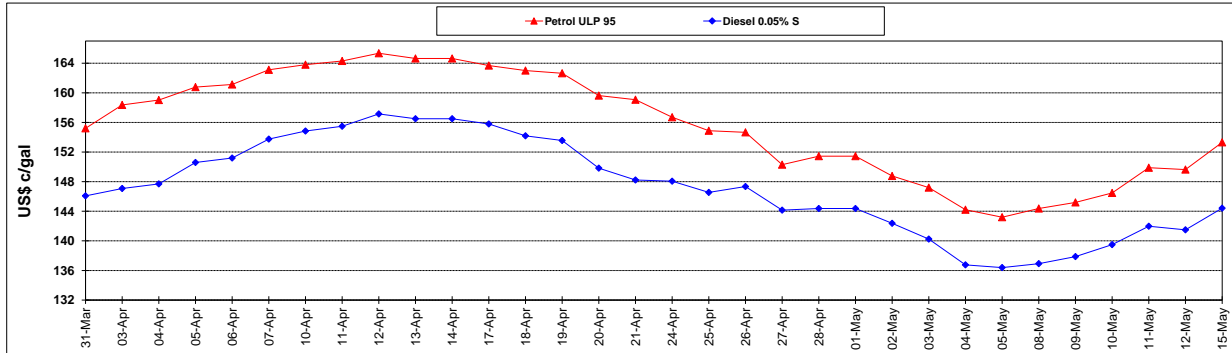
ANALYSIS MOVEMENT OF AVERAGE OVER/(UNDER) RECOVERY					
	PETROL 95	PETROL 93	DIESEL 0.05%	DIESEL 0.005%	ILL. PAR.
- MOVEMENT IN INTERNATIONAL PRODUCT PRICES	14.736	19.407	15.809	15.883	17.157
- MOVEMENT IN EXCHANGE RATE	4.989	4.842	4.783	4.815	4.727
AVERAGE UNIT OVER/(UNDER) RECOVERY 26/04/2017 - 15/05/2017	19.725	24.249	20.592	20.698	21.884

R/\$ EXCHANGE RATE - (R/\$ 13.2575 - 15/05/2017)

EXCHANGE RATE USED IN BASIC FUEL PRICE



INTERNATIONAL PRODUCT PRICES OF BASKET USED IN BASIC FUEL PRICE



BASIC FUEL PRICE IN SA CENTS PER LITRE

