

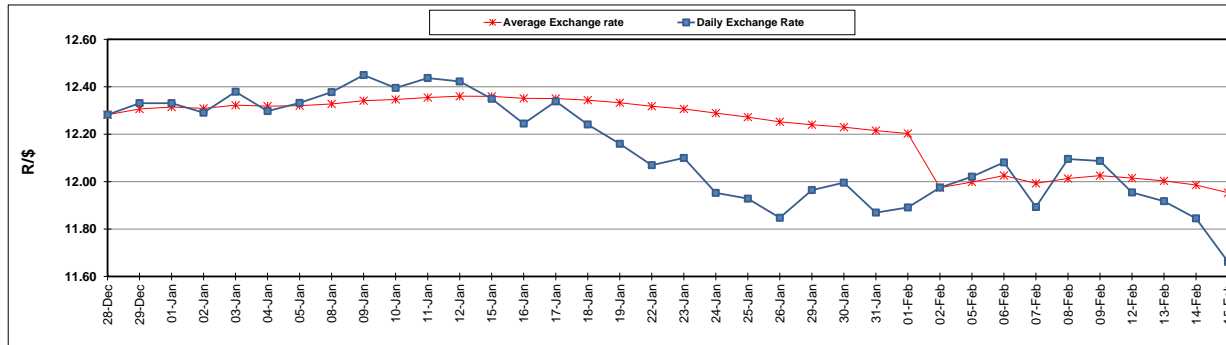
	PETROL 95 ULP	PETROL 93 ULP & LRP	DIESEL 0.05%	DIESEL 0.005%	ILL. PAR.
GAUTENG PUMP PRICE (SA c/l) AS FROM 07/02/2018	1 412.000	1 419.000	-	-	-
WHOLESALE PRICE (SA c/l) AS FROM 07/02/2018	-	-	1 256.630	1 259.030	818.388
SINGLE NATIONAL MAXIMUM RETAIL PRICE	-	-	-	-	1 056.000
BASIC FUEL PRICE - 15/02/2018 (SA c/l)	572.295	559.030	577.950	583.016	604.351
PRESS RELEASE CONTRIBUTION TO BFP 07/02/2018 - 15/02/2018 (SA c/l)	622.170	610.170	645.630	648.030	648.128
UNIT OVER/(UNDER) RECOVERY - 15/02/2018 (SA c/l)	49.875	51.140	67.680	65.014	43.777
AVERAGE BASIC FUEL PRICE 02/02/2018 - 15/02/2018	600.081	585.582	607.750	612.255	628.266
AVERAGE UNIT OVER/(UNDER) RECOVERY 02/02/2018 - 15/02/2018	31.089	33.588	42.980	40.875	25.563

### ANALYSIS MOVEMENT OF AVERAGE OVER/(UNDER) RECOVERY

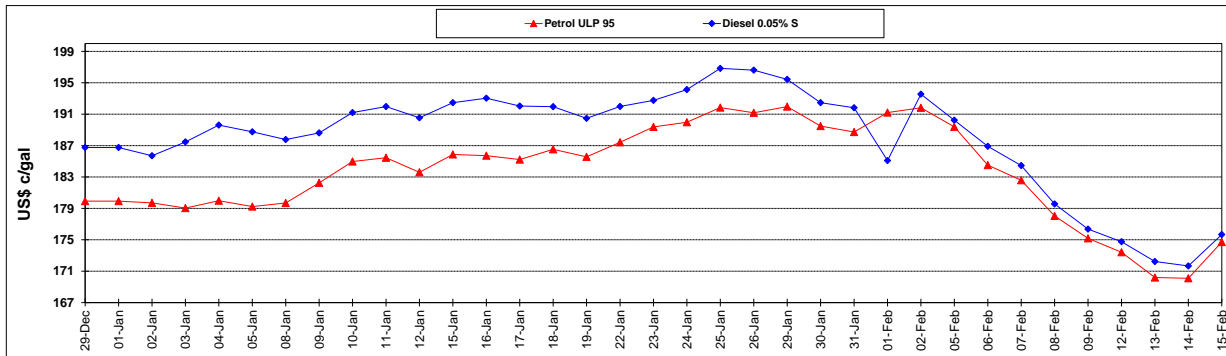
	PETROL 95	PETROL 93	DIESEL 0.05%	DIESEL 0.005%	ILL. PAR.
- MOVEMENT IN INTERNATIONAL PRODUCT PRICES	18.548	21.350	30.279	28.080	12.432
- MOVEMENT IN EXCHANGE RATE	12.541	12.238	12.701	12.795	13.130
AVERAGE UNIT OVER/(UNDER) RECOVERY 02/02/2018 - 15/02/2018	31.089	33.588	42.980	40.875	25.563

### R/\$ EXCHANGE RATE - (R/\$ 11.6618 - 15/02/2018)

#### EXCHANGE RATE USED IN BASIC FUEL PRICE



#### INTERNATIONAL PRODUCT PRICES OF BASKET USED IN BASIC FUEL PRICE



#### BASIC FUEL PRICE IN SA CENTS PER LITRE

