

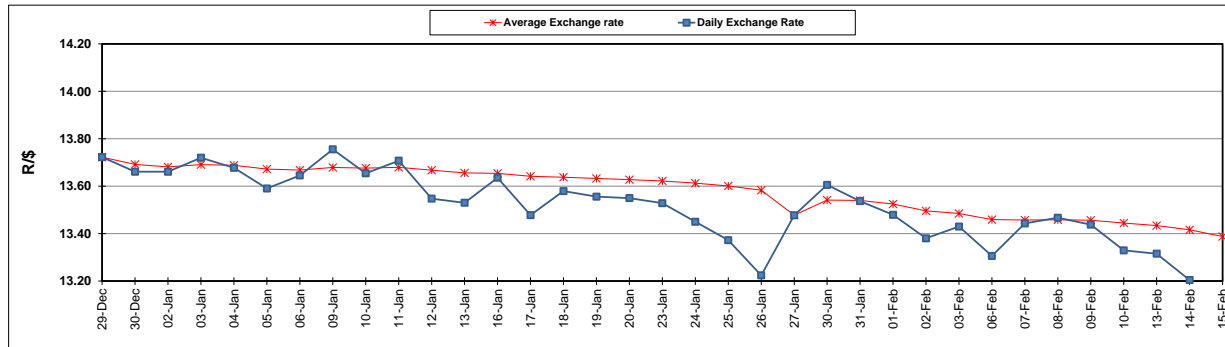
	PETROL 95 ULP	PETROL 93 ULP & LRP	DIESEL 0.05%	DIESEL 0.005%	ILL. PAR.
GAUTENG PUMP PRICE (SA c/l) AS FROM 01/02/2017	1 362.000	1 338.000	-	-	-
WHOLESALE PRICE (SA c/l) AS FROM 01/02/2017	-	-	1 162.830	1 165.230	758.588
SINGLE NATIONAL MAXIMUM RETAIL PRICE	-	-	-	-	976.000
BASIC FUEL PRICE - 15/02/2017 (SA c/l)	605.823	591.381	572.827	575.446	569.057
PRESS RELEASE CONTRIBUTION TO BFP 01/02/2017 - 15/02/2017 (SA c/l)	620.870	606.870	590.630	593.030	591.128
UNIT OVER/(UNDER) RECOVERY (SA c/l) - 15/02/2017	15.047	15.489	17.803	17.584	22.071
AVERAGE BASIC FUEL PRICE 27/01/2017 - 15/02/2017	617.160	601.899	588.898	591.241	582.927
AVERAGE UNIT OVER/(UNDER) RECOVERY 27/01/2017- 15/02/2017	(2.504)	(1.243)	(2.768)	(2.711)	4.558

### ANALYSIS MOVEMENT OF AVERAGE OVER/(UNDER) RECOVERY

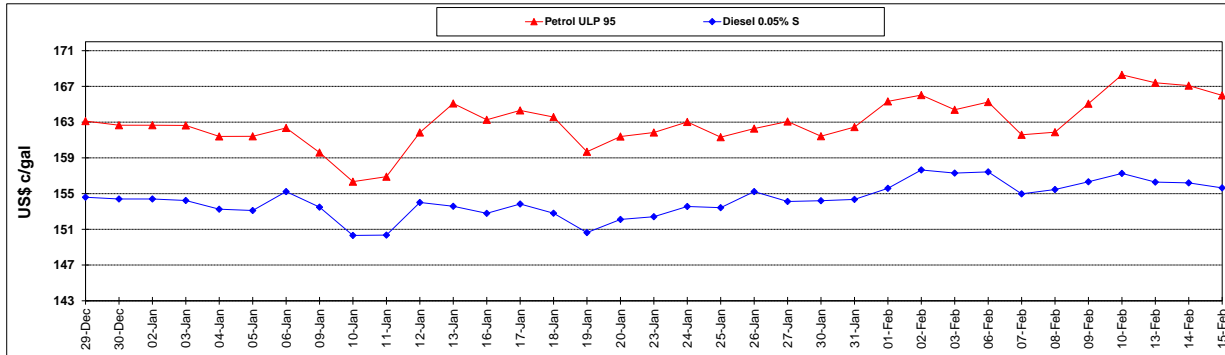
	PETROL 95	PETROL 93	DIESEL 0.05%	DIESEL 0.005%	ILL. PAR.
- MOVEMENT IN INTERNATIONAL PRODUCT PRICES	(11.502)	(10.019)	(11.354)	(11.331)	(3.941)
- MOVEMENT IN EXCHANGE RATE	8.998	8.776	8.586	8.620	8.499
AVERAGE UNIT OVER/(UNDER) RECOVERY 27/01/2017 - 15/02/2017	(2.504)	(1.243)	(2.768)	(2.711)	4.558

R/\$ EXCHANGE RATE - (R/\$ 13.0180- 15/02/2017)

### EXCHANGE RATE USED IN BASIC FUEL PRICE



### INTERNATIONAL PRODUCT PRICES OF BASKET USED IN BASIC FUEL PRICE



### BASIC FUEL PRICE IN SA CENTS PER LITRE

