

## UPDATE OF THE BASIC FUEL PRICE

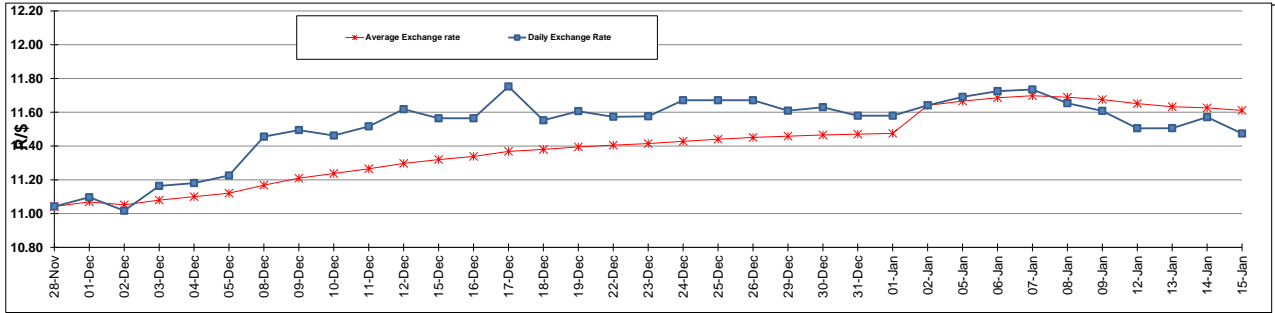
	PETROL 95 ULP	PETROL 93 ULP & LRP	DIESEL 0.05%	DIESEL 0.005%	ILL. PAR.
GAUTENG PUMP PRICE (SA c/l) AS FROM 07/01/2015	1,124.000	1,102.000	-	-	-
WHOLESALE PRICE (SA c/l) AS FROM 07/01/2015	-	-	1,028.090	1,032.490	747.928
SINGLE NATIONAL MAXIMUM RETAIL PRICE	-	-	-	-	969.000
BASIC FUEL PRICE - 15/01/2015 (SA c/l)	450.801	436.635	486.874	490.765	496.543
PRESS RELEASE CONTRIBUTION TO BFP 07/01/2015 - 15/01/2015 (SA c/l)	533.250	521.250	582.630	587.030	593.128
UNIT OVER/(UNDER) RECOVERY (SA c/l) - 15/01/2015	82.449	84.615	95.756	96.265	96.585
AVERAGE BASIC FUEL PRICE 02/01/2015 - 15/01/2015	463.634	451.405	506.308	510.337	513.319
AVERAGE UNIT OVER/(UNDER) RECOVERY 02/01/2015 - 15/01/2015	106.516	107.945	107.522	108.193	112.209

### ANALYSIS MOVEMENT OF AVERAGE OVER/(UNDER) RECOVERY

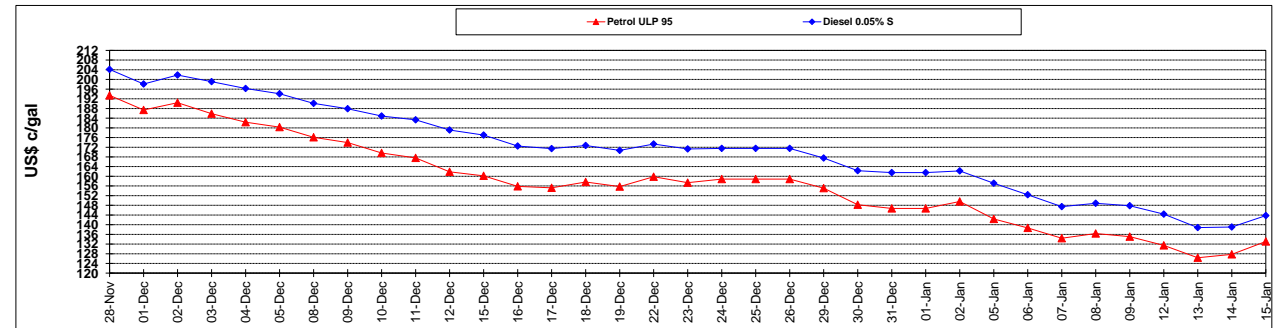
	PETROL 95	PETROL 93	DIESEL 0.05%	DIESEL 0.005%	ILL. PAR.
- MOVEMENT IN INTERNATIONAL PRODUCT PRICES	111.947	113.232	113.452	114.171	118.222
- MOVEMENT IN EXCHANGE RATE	(5.431)	(5.287)	(5.930)	(5.978)	(6.013)
AVERAGE UNIT OVER/(UNDER) RECOVERY 02/01/2015 - 15/01/2015	106.516	107.945	107.522	108.193	112.209

**R/\$ EXCHANGE RATE - (R/\$ 11.4742 - 15/01/2015)**

### EXCHANGE RATE USED IN BASIC FUEL PRICE



### INTERNATIONAL PRODUCT PRICES OF BASKET USED IN BASIC FUEL PRICE



### BASIC FUEL PRICE IN SA CENTS PER LITRE

