

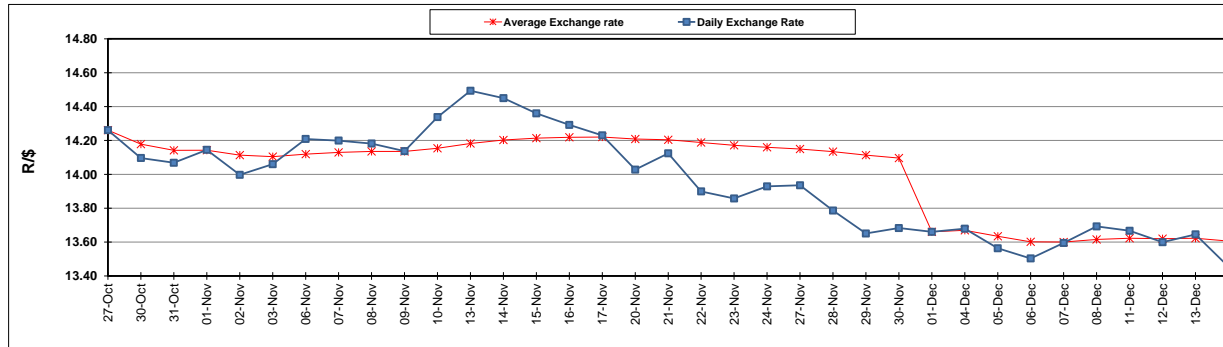
	PETROL 95 ULP	PETROL 93 ULP & LRP	DIESEL 0.05%	DIESEL 0.005%	ILL. PAR.
GAUTENG PUMP PRICE (SA c/l) AS FROM 07/12/2017	1 476.000	1 449.000	-	-	-
WHOLESALE PRICE (SA c/l) AS FROM 07/12/2017	-	-	1 295.630	1 302.030	865.388
SINGLE NATIONAL MAXIMUM RETAIL PRICE	-	-	-	-	1 119.000
BASIC FUEL PRICE - 14/12/2017 (SA c/l)	646.059	635.389	657.016	660.293	656.937
PRESS RELEASE CONTRIBUTION TO BFP 05/12/2017 - 14/12/2017 (SA c/l)	686.170	669.170	684.630	691.030	695.128
UNIT OVER/(UNDER) RECOVERY - 14/12/2017 (SA c/l)	40.111	33.781	27.614	30.737	38.191
AVERAGE BASIC FUEL PRICE 01/12/2017 - 14/12/2017	656.477	643.449	664.726	668.489	667.688
AVERAGE UNIT OVER/(UNDER) RECOVERY 01/12/2017 - 14/12/2017	9.563	5.591	1.604	5.141	5.240

ANALYSIS MOVEMENT OF AVERAGE OVER/(UNDER) RECOVERY

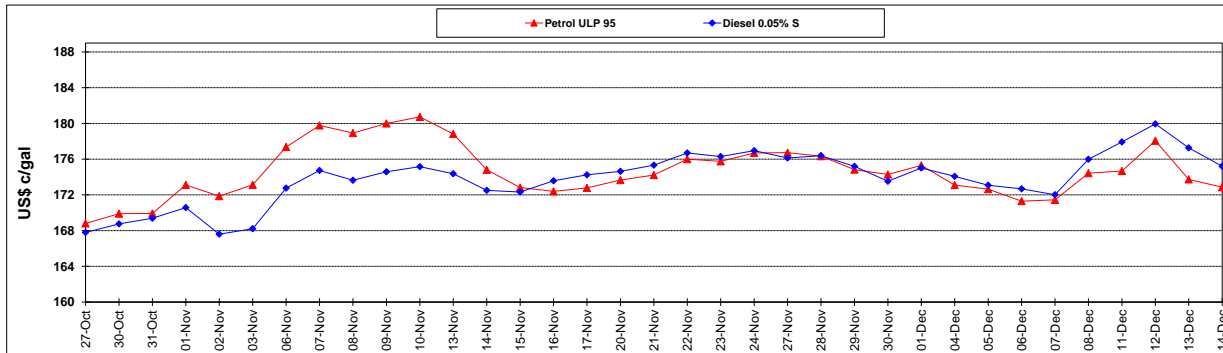
	PETROL 95	PETROL 93	DIESEL 0.05%	DIESEL 0.005%	ILL. PAR.
- MOVEMENT IN INTERNATIONAL PRODUCT PRICES	(14.098)	(17.601)	(22.355)	(18.953)	(18.825)
- MOVEMENT IN EXCHANGE RATE	23.661	23.192	23.959	24.094	24.065
AVERAGE UNIT OVER/(UNDER) RECOVERY 01/12/2017 - 14/12/2017	9.563	5.591	1.604	5.141	5.240

R/\$ EXCHANGE RATE - (R/\$ 13.4550 - 14/12/2017)

EXCHANGE RATE USED IN BASIC FUEL PRICE



INTERNATIONAL PRODUCT PRICES OF BASKET USED IN BASIC FUEL PRICE



BASIC FUEL PRICE IN SA CENTS PER LITRE

