

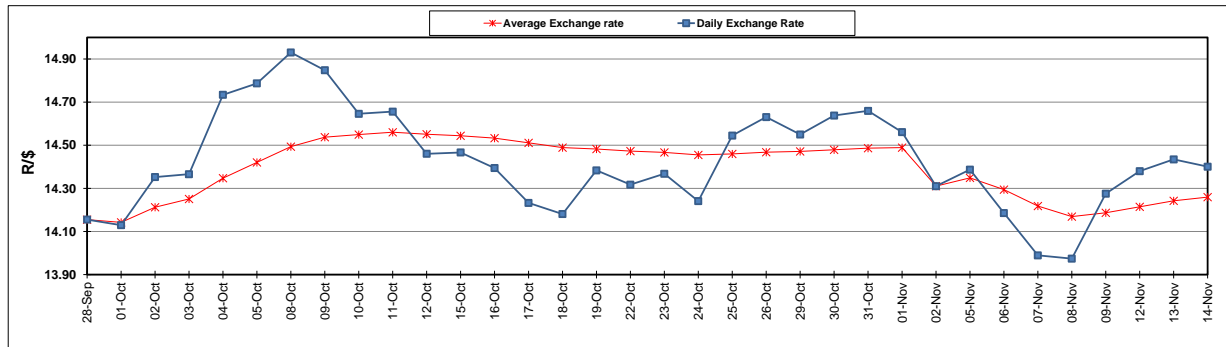
	PETROL 95 ULP	PETROL 93 ULP & LRP	DIESEL 0.05%	DIESEL 0.005%	ILL. PAR.
GAUTENG PUMP PRICE (SA c/l) AS FROM 07/11/2018	1 708.000	1 685.000	-	-	-
WHOLESALE PRICE (SA c/l) AS FROM 07/11/2018	-	-	1 612.750	1 620.150	1 085.088
SINGLE NATIONAL MAXIMUM RETAIL PRICE	-	-	-	-	1 409.000
BASIC FUEL PRICE - 14/11/2018 (SA c/l)	649.993	638.037	791.626	798.083	795.648
PRESS RELEASE CONTRIBUTION TO BFP 07/11/2018 - 14/11/2018 (SA c/l)	829.250	816.250	917.630	925.030	912.128
UNIT OVER/(UNDER) RECOVERY - 14/11/2018 (SA c/l)	179.257	178.213	126.004	126.947	116.480
AVERAGE BASIC FUEL PRICE 02/11/2018 - 14/11/2018	682.247	672.562	817.342	823.505	817.870
AVERAGE UNIT OVER/(UNDER) RECOVERY 02/11/2018 - 14/11/2018	154.310	150.995	91.621	91.858	84.924

ANALYSIS MOVEMENT OF AVERAGE OVER/(UNDER) RECOVERY

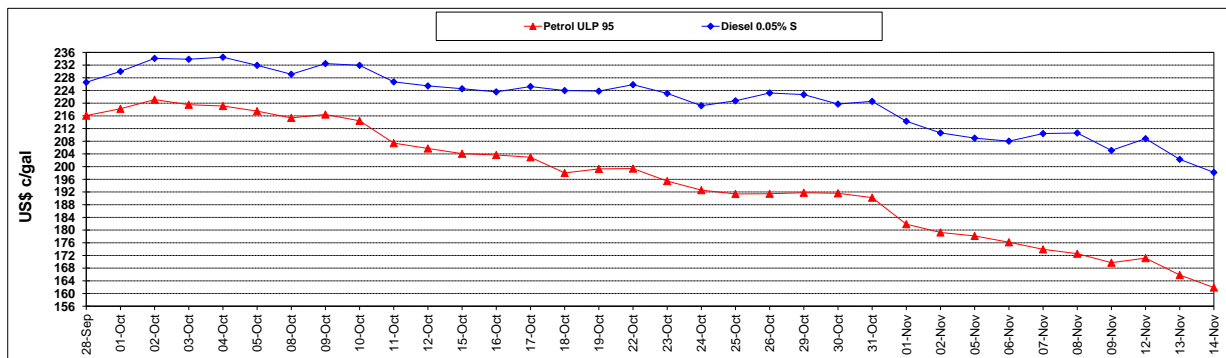
	PETROL 95	PETROL 93	DIESEL 0.05%	DIESEL 0.005%	ILL. PAR.
- MOVEMENT IN INTERNATIONAL PRODUCT PRICES	143.325	140.166	78.461	78.598	71.756
- MOVEMENT IN EXCHANGE RATE	10.985	10.829	13.160	13.260	13.169
AVERAGE UNIT OVER/(UNDER) RECOVERY 02/11/2018 - 14/11/2018	154.310	150.995	91.621	91.858	84.924

R/\$ EXCHANGE RATE - (R/\$14.4005 - 14/11/2018)

EXCHANGE RATE USED IN BASIC FUEL PRICE



INTERNATIONAL PRODUCT PRICES OF BASKET USED IN BASIC FUEL PRICE



BASIC FUEL PRICE IN SA CENTS PER LITRE

