

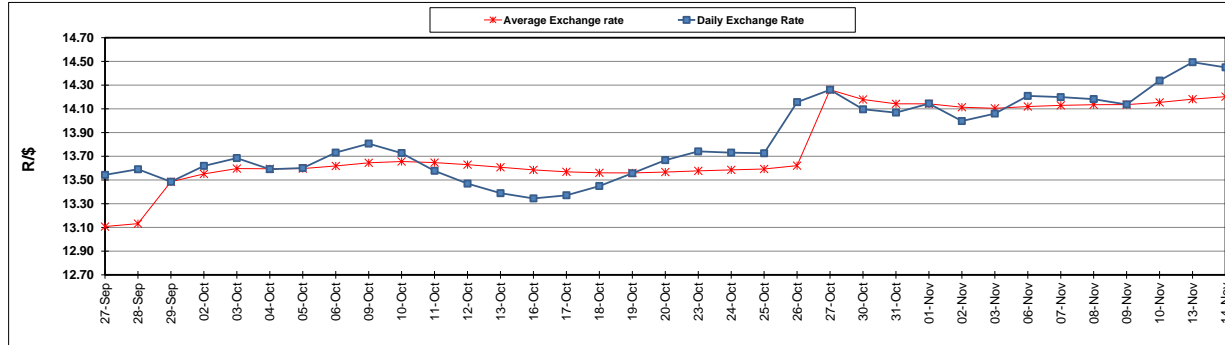
	PETROL 95 ULP	PETROL 93 ULP & LRP	DIESEL 0.05%	DIESEL 0.005%	ILL. PAR.
GAUTENG PUMP PRICE (SA c/l) AS FROM 01/11/2017	1 405.000	1 378.000	-	-	-
WHOLESALE PRICE (SA c/l) AS FROM 01/11/2017	-	-	1 235.330	1 244.730	792.088
SINGLE NATIONAL MAXIMUM RETAIL PRICE	-	-	-	-	1 021.000
BASIC FUEL PRICE -14/11/2017 (SA c/l)	703.168	688.980	697.271	702.059	706.998
PRESS RELEASE CONTRIBUTION TO BFP 01/11/2017 - 14/11/2017 (SA c/l)	619.070	602.070	623.630	633.030	621.128
UNIT OVER/(UNDER) RECOVERY (SA c/l) - 14/11/2017	(84.098)	(86.910)	(73.641)	(69.029)	(85.870)
AVERAGE BASIC FUEL PRICE 27/10/2017 - 14/11/2017	691.891	675.815	681.072	688.239	691.524
AVERAGE UNIT OVER/(UNDER) RECOVERY 27/10/2017 - 14/11/2017	(73.744)	(74.669)	(62.750)	(61.439)	(75.242)

ANALYSIS MOVEMENT OF AVERAGE OVER/(UNDER) RECOVERY

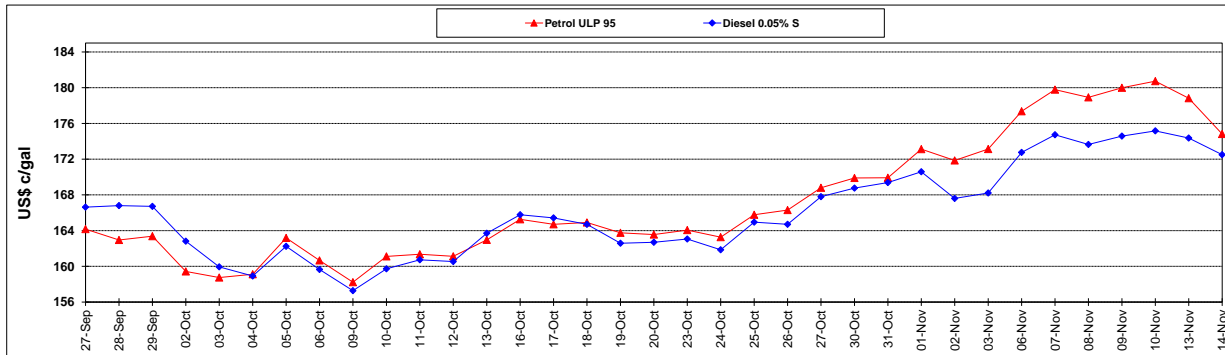
	PETROL 95	PETROL 93	DIESEL 0.05%	DIESEL 0.005%	ILL. PAR.
- MOVEMENT IN INTERNATIONAL PRODUCT PRICES	(45.406)	(46.989)	(34.855)	(33.252)	(46.919)
- MOVEMENT IN EXCHANGE RATE	(28.338)	(27.679)	(27.895)	(28.188)	(28.323)
AVERAGE UNIT OVER/(UNDER) RECOVERY 27/10/2017 - 14/11/2017	(73.744)	(74.669)	(62.750)	(61.439)	(75.242)

R/\$ EXCHANGE RATE - (R/\$ 14.4500 - 14/11/2017)

EXCHANGE RATE USED IN BASIC FUEL PRICE



INTERNATIONAL PRODUCT PRICES OF BASKET USED IN BASIC FUEL PRICE



BASIC FUEL PRICE IN SA CENTS PER LITRE

