

## UPDATE OF THE BASIC FUEL PRICE

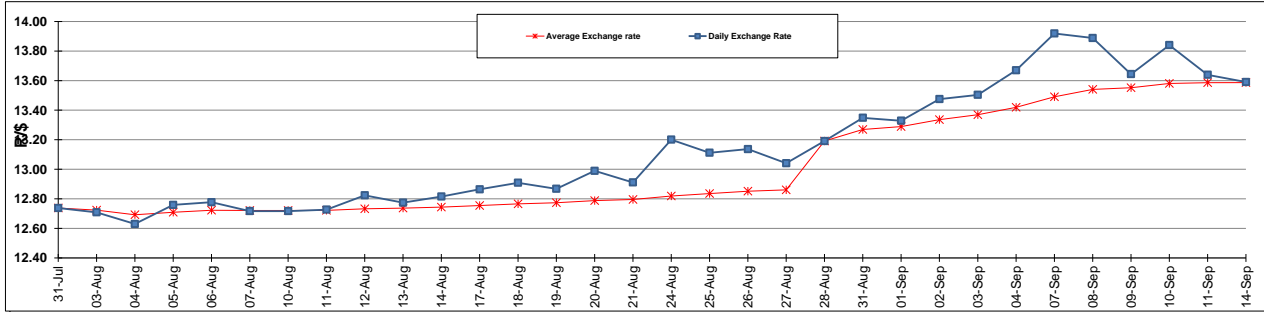
	PETROL 95 ULP	PETROL 93 ULP & LRP	DIESEL 0.05%	DIESEL 0.005%	ILL. PAR.
GAUTENG PUMP PRICE (SA c/l) AS FROM 02/09/2015	1,257.000	1,232.000	-	-	-
WHOLESALE PRICE (SA c/l) AS FROM 02/09/2015	-	-	1,040.970	1,049.370	661.828
SINGLE NATIONAL MAXIMUM RETAIL PRICE	-	-	-	-	847.000
BASIC FUEL PRICE - 14/09/2015 (SA c/l)	578.200	558.222	565.020	571.195	553.966
PRESS RELEASE CONTRIBUTION TO BFP 02/09/2015 - 14/09/2015 (SA c/l)	578.870	563.870	512.630	521.030	504.128
UNIT OVER/(UNDER) RECOVERY (SA c/l) - 14/09/2015	0.670	5.648	(52.390)	(50.165)	(49.838)
AVERAGE BASIC FUEL PRICE 28/08/2015 - 14/09/2015	598.299	575.440	577.060	583.922	565.158
AVERAGE UNIT OVER/(UNDER) RECOVERY 28/08/2015 - 14/09/2015	(1.029)	6.830	(50.930)	(50.142)	(47.280)

## ANALYSIS MOVEMENT OF AVERAGE OVER/(UNDER) RECOVERY

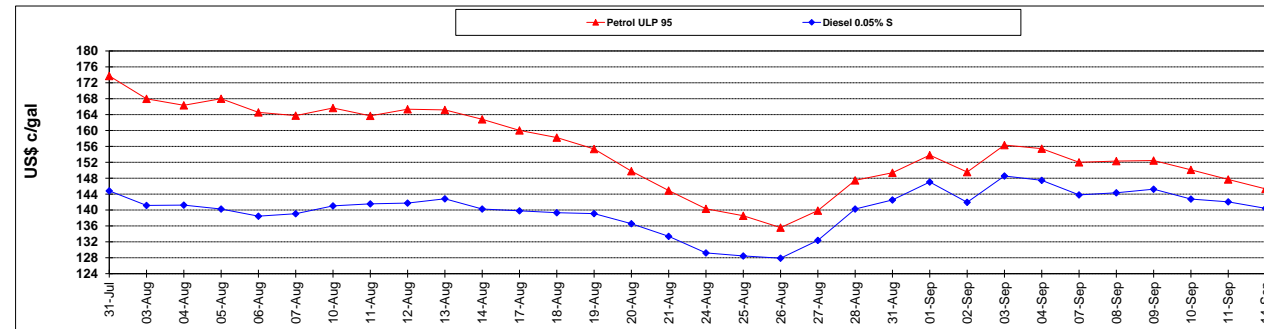
	PETROL 95	PETROL 93	DIESEL 0.05%	DIESEL 0.005%	ILL. PAR.
- MOVEMENT IN INTERNATIONAL PRODUCT PRICES	30.924	37.562	(20.112)	(18.957)	(17.097)
- MOVEMENT IN EXCHANGE RATE	(31.953)	(30.732)	(30.818)	(31.185)	(30.183)
AVERAGE UNIT OVER/(UNDER) RECOVERY 28/08/2015 - 14/09/2015	(1.029)	6.830	(50.930)	(50.142)	(47.280)

**R/\$ EXCHANGE RATE - (R/\$ 13.5905 - 14/09/2015)**

## EXCHANGE RATE USED IN BASIC FUEL PRICE



## INTERNATIONAL PRODUCT PRICES OF BASKET USED IN BASIC FUEL PRICE



## BASIC FUEL PRICE IN SA CENTS PER LITRE

