

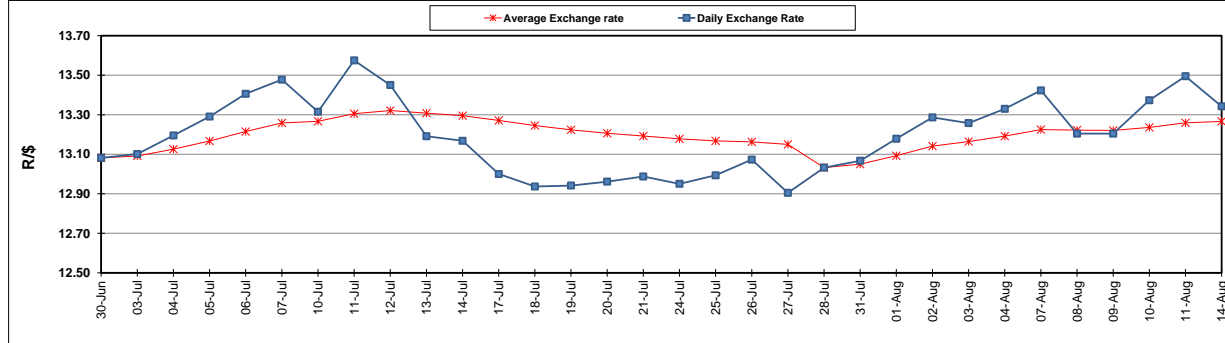
	PETROL 95 ULP	PETROL 93 ULP & LRP	DIESEL 0.05%	DIESEL 0.005%	ILL. PAR.
GAUTENG PUMP PRICE (SA c/l) AS FROM 02/08/2017	1 305.000	1 282.000	-	-	-
WHOLESALE PRICE (SA c/l) AS FROM 02/08/2017	-	-	1 126.330	1 131.730	683.088
SINGLE NATIONAL MAXIMUM RETAIL PRICE	-	-	-	-	876.000
BASIC FUEL PRICE - 14/08/2017 (SA c/l)	587.538	571.163	561.466	567.112	563.905
PRESS RELEASE CONTRIBUTION TO BFP 02/08/2017 - 14/08/2017 (SA c/l)	523.670	510.670	514.630	520.030	512.128
UNIT OVER/(UNDER) RECOVERY (SA c/l) - 14/08/2017	(63.868)	(60.493)	(46.836)	(47.082)	(51.777)
AVERAGE BASIC FUEL PRICE 28/07/2017 - 14/08/2017	582.068	566.367	562.304	568.877	563.142
AVERAGE UNIT OVER/(UNDER) RECOVERY 28/07/2017 - 14/08/2017	(63.148)	(60.447)	(54.924)	(56.347)	(57.514)

### ANALYSIS MOVEMENT OF AVERAGE OVER/(UNDER) RECOVERY

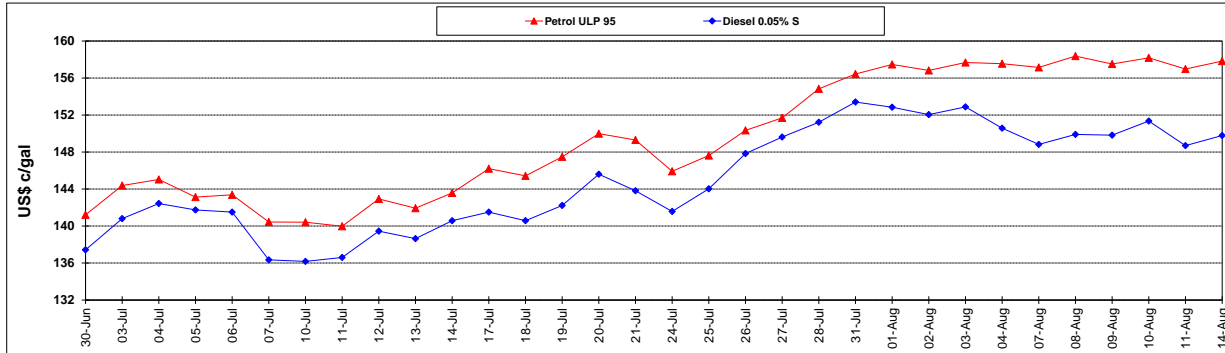
	PETROL 95	PETROL 93	DIESEL 0.05%	DIESEL 0.005%	ILL. PAR.
- MOVEMENT IN INTERNATIONAL PRODUCT PRICES	(58.050)	(55.486)	(49.999)	(51.364)	(52.581)
- MOVEMENT IN EXCHANGE RATE	(5.098)	(4.961)	(4.925)	(4.983)	(4.933)
AVERAGE UNIT OVER/(UNDER) RECOVERY 28/07/2017 - 14/08/2017	(63.148)	(60.447)	(54.924)	(56.347)	(57.514)

**R/\$ EXCHANGE RATE - (R/\$ 13.3423 - 14/08/2017)**

### EXCHANGE RATE USED IN BASIC FUEL PRICE



### INTERNATIONAL PRODUCT PRICES OF BASKET USED IN BASIC FUEL PRICE



### BASIC FUEL PRICE IN SA CENTS PER LITRE

