

UPDATE OF THE BASIC FUEL PRICE

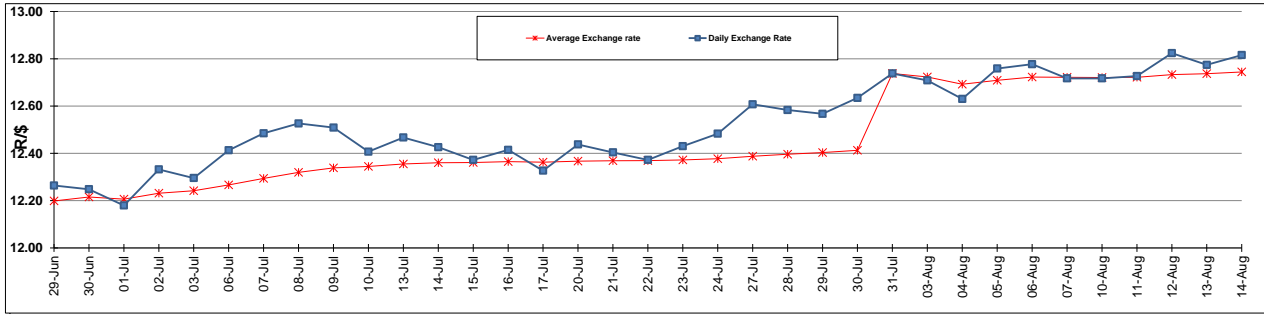
	PETROL 95 ULP	PETROL 93 ULP & LRP	DIESEL 0.05%	DIESEL 0.005%	ILL. PAR.
GAUTENG PUMP PRICE (SA c/l) AS FROM 05/08/2015	1,326.000	1,301.000	-	-	-
WHOLESALE PRICE (SA c/l) AS FROM 05/08/2015	-	-	1,094.970	1,100.370	716.828
SINGLE NATIONAL MAXIMUM RETAIL PRICE	-	-	-	-	921.000
BASIC FUEL PRICE - 14/08/2015 (SA c/l)	603.876	578.825	531.205	539.111	518.829
PRESS RELEASE CONTRIBUTION TO BFP 05/08/2015 - 14/08/2015 (SA c/l)	652.470	637.470	566.630	572.030	559.128
UNIT OVER/(UNDER) RECOVERY (SA c/l) - 14/08/2015	48.594	58.645	35.425	32.919	40.299
AVERAGE BASIC FUEL PRICE 31/07/2015 - 14/08/2015	611.076	587.773	530.646	538.641	518.649
AVERAGE UNIT OVER/(UNDER) RECOVERY 31/07/2015 - 14/08/2015	55.353	63.656	56.711	53.571	59.570

ANALYSIS MOVEMENT OF AVERAGE OVER/(UNDER) RECOVERY

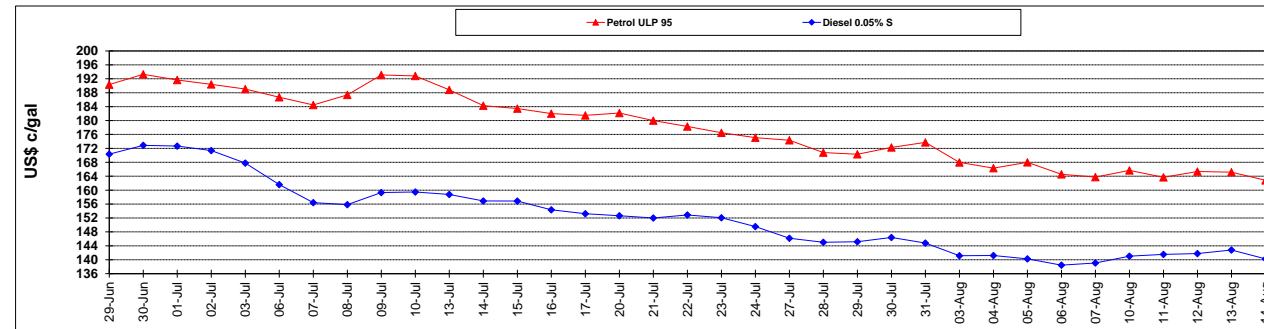
	PETROL 95	PETROL 93	DIESEL 0.05%	DIESEL 0.005%	ILL. PAR.
- MOVEMENT IN INTERNATIONAL PRODUCT PRICES	75.716	83.242	74.395	71.521	76.854
- MOVEMENT IN EXCHANGE RATE	(20.364)	(19.587)	(17.684)	(17.950)	(17.284)
AVERAGE UNIT OVER/(UNDER) RECOVERY 31/07/2015 - 14/08/2015	55.353	63.656	56.711	53.571	59.570

R/\$ EXCHANGE RATE - (R/\$ 12.8156 - 14/08/2015)

EXCHANGE RATE USED IN BASIC FUEL PRICE



INTERNATIONAL PRODUCT PRICES OF BASKET USED IN BASIC FUEL PRICE



BASIC FUEL PRICE IN SA CENTS PER LITRE

