

## UPDATE OF THE BASIC FUEL PRICE

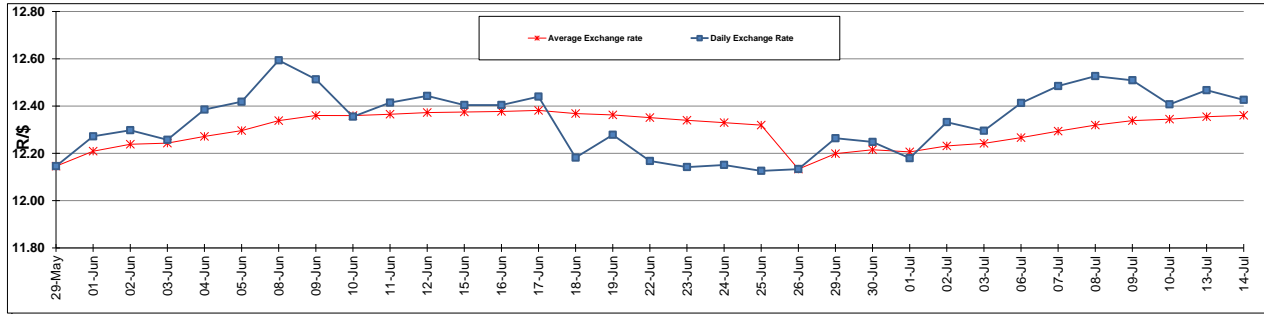
	PETROL 95 ULP	PETROL 93 ULP & LRP	DIESEL 0.05%	DIESEL 0.005%	ILL. PAR.
GAUTENG PUMP PRICE (SA c/l) AS FROM 01/07/2015	1,377.000	1,352.000	-	-	-
WHOLESALE PRICE (SA c/l) AS FROM 01/07/2015	-	-	1,170.790	1,174.190	786.828
SINGLE NATIONAL MAXIMUM RETAIL PRICE	-	-	-	-	1,014.000
BASIC FUEL PRICE - 14/07/2015 (SA c/l)	650.798	632.999	564.037	568.503	555.559
PRESS RELEASE CONTRIBUTION TO BFP 01/07/2015 - 14/07/2015 (SA c/l)	703.650	688.650	642.630	646.030	629.128
UNIT OVER/(UNDER) RECOVERY (SA c/l) - 14/07/2015	52.852	55.651	78.593	77.527	73.569
AVERAGE BASIC FUEL PRICE 26/06/2015 - 14/07/2015	665.638	649.558	586.447	592.359	575.920
AVERAGE UNIT OVER/(UNDER) RECOVERY 26/06/2015 - 14/07/2015	28.550	28.938	55.259	52.748	51.823

### ANALYSIS MOVEMENT OF AVERAGE OVER/(UNDER) RECOVERY

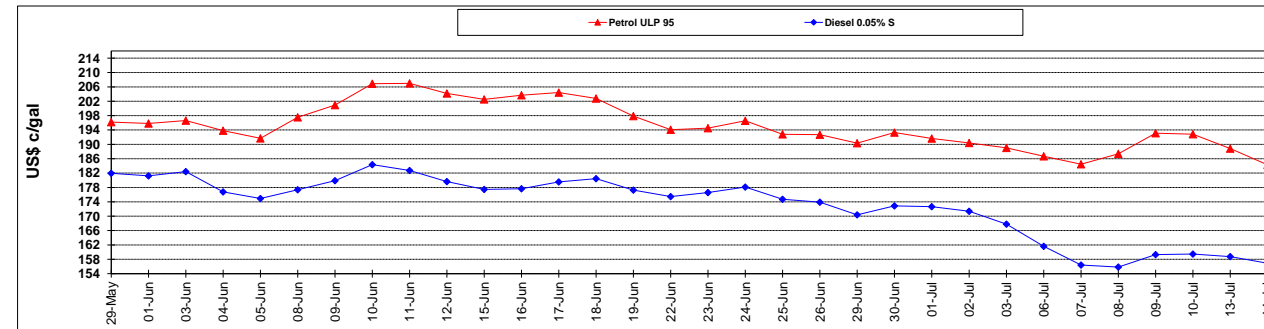
	PETROL 95	PETROL 93	DIESEL 0.05%	DIESEL 0.005%	ILL. PAR.
- MOVEMENT IN INTERNATIONAL PRODUCT PRICES	30.753	31.087	57.201	54.708	53.729
- MOVEMENT IN EXCHANGE RATE	(2.203)	(2.149)	(1.941)	(1.960)	(1.906)
AVERAGE UNIT OVER/(UNDER) RECOVERY 26/06/2015 - 14/07/2015	28.550	28.938	55.259	52.748	51.823

**R/\$ EXCHANGE RATE - (R/\$ 12.4261 - 14/07/2015)**

### EXCHANGE RATE USED IN BASIC FUEL PRICE



### INTERNATIONAL PRODUCT PRICES OF BASKET USED IN BASIC FUEL PRICE



### BASIC FUEL PRICE IN SA CENTS PER LITRE

