

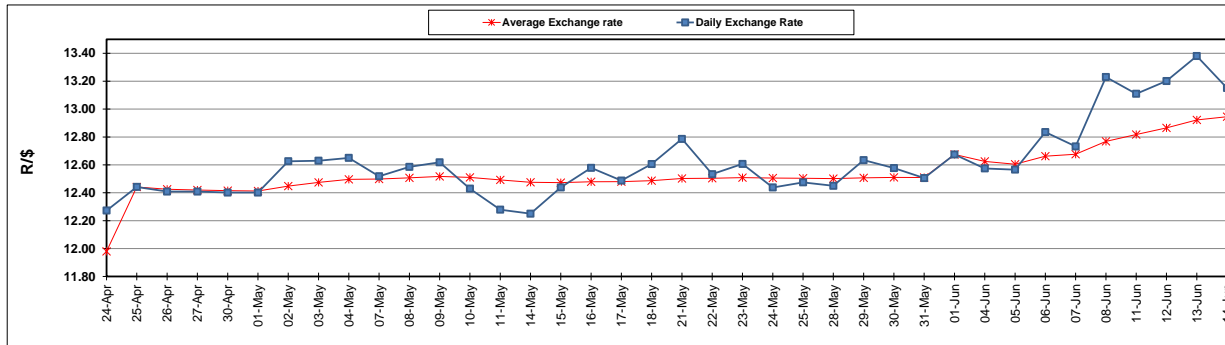
	PETROL 95 ULP	PETROL 93 ULP & LRP	DIESEL 0.05%	DIESEL 0.005%	ILL. PAR.
GAUTENG PUMP PRICE (SA c/l) AS FROM 06/06/2018	1 579.000	1 554.000	-	-	-
WHOLESALE PRICE (SA c/l) AS FROM 06/06/2018	-	-	1 418.830	1 425.230	927.088
SINGLE NATIONAL MAXIMUM RETAIL PRICE	-	-	-	-	1 198.000
BASIC FUEL PRICE - 14/06/2018 (SA c/l)	737.359	726.161	758.894	762.666	761.134
PRESS RELEASE CONTRIBUTION TO BFP 06/06/2018 - 14/06/2018 (SA c/l)	727.070	712.070	745.630	752.030	754.128
UNIT OVER/(UNDER) RECOVERY - 14/06/2018 (SA c/l)	(10.289)	(14.091)	(13.264)	(10.636)	(7.006)
AVERAGE BASIC FUEL PRICE 01/06/2018 - 14/06/2018	731.733	719.727	749.889	753.968	751.870
AVERAGE UNIT OVER/(UNDER) RECOVERY 01/06/2018 - 14/06/2018	(29.263)	(32.257)	(29.759)	(28.038)	(22.342)

ANALYSIS MOVEMENT OF AVERAGE OVER/(UNDER) RECOVERY

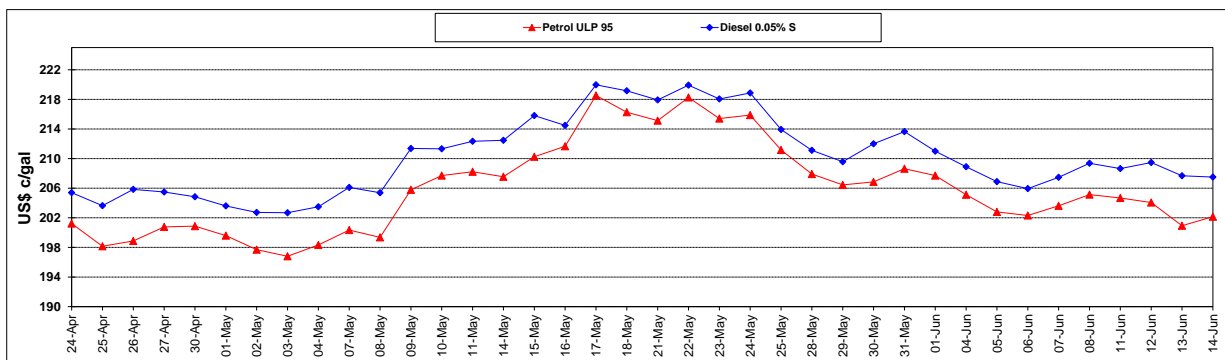
	PETROL 95	PETROL 93	DIESEL 0.05%	DIESEL 0.005%	ILL. PAR.
- MOVEMENT IN INTERNATIONAL PRODUCT PRICES	(4.647)	(8.044)	(4.532)	(2.674)	2.952
- MOVEMENT IN EXCHANGE RATE	(24.616)	(24.213)	(25.227)	(25.364)	(25.294)
AVERAGE UNIT OVER/(UNDER) RECOVERY 01/06/2018 - 14/06/2018	(29.263)	(32.257)	(29.759)	(28.038)	(22.342)

R/\$ EXCHANGE RATE - (R/\$13.1510 - 14/06/2018)

EXCHANGE RATE USED IN BASIC FUEL PRICE



INTERNATIONAL PRODUCT PRICES OF BASKET USED IN BASIC FUEL PRICE



BASIC FUEL PRICE IN SA CENTS PER LITRE

