

UPDATE OF THE BASIC FUEL PRICE

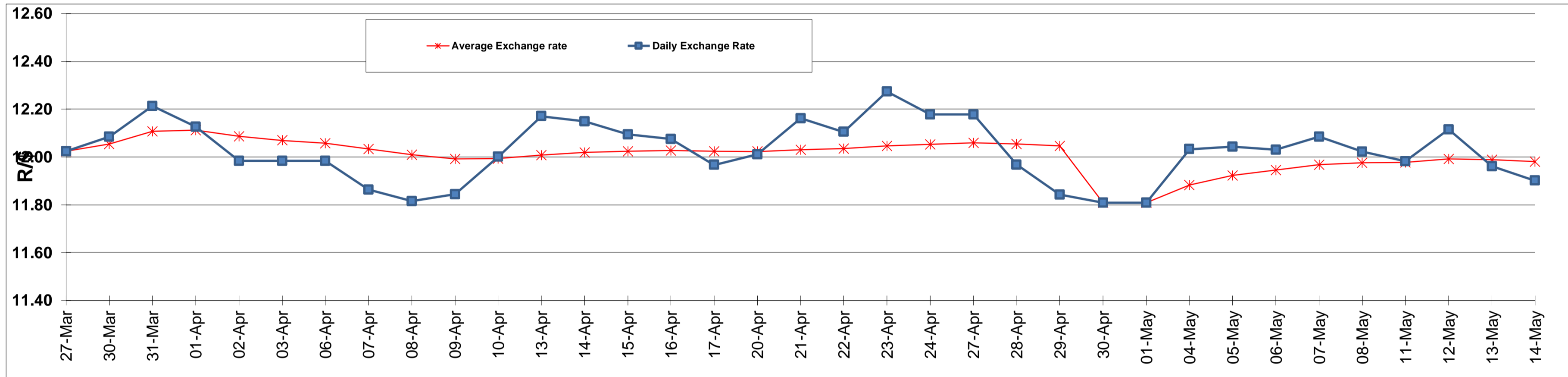
	PETROL 95 ULP	PETROL 93 ULP & LRP	DIESEL 0.05%	DIESEL 0.005%	ILL. PAR.
GAUTENG PUMP PRICE (SA c/l) AS FROM 07/05/2015	1,289.000	1,261.000	-	-	-
WHOLESALE PRICE (SA c/l) AS FROM 07/05/2015	-	-	1,122.790	1,129.190	743.828
SINGLE NATIONAL MAXIMUM RETAIL PRICE	-	-	-	-	957.000
BASIC FUEL PRICE - 14/05/2015 (SA c/l)	666.861	654.019	652.804	654.620	632.651
PRESS RELEASE CONTRIBUTION TO BFP 06/05/2015 - 14/05/2015 (SA c/l)	615.650	597.650	589.630	596.030	581.128
UNIT OVER/(UNDER) RECOVERY (SA c/l) - 14/05/2015	(51.211)	(56.369)	(63.174)	(58.590)	(51.523)
AVERAGE BASIC FUEL PRICE 30/04/2015 - 14/05/2015	663.568	649.883	647.120	649.847	632.483
AVERAGE UNIT OVER/(UNDER) RECOVERY 30/04/2015 - 14/05/2015	(47.918)	(52.233)	(55.671)	(51.999)	(49.537)

ANALYSIS MOVEMENT OF AVERAGE OVER/(UNDER) RECOVERY

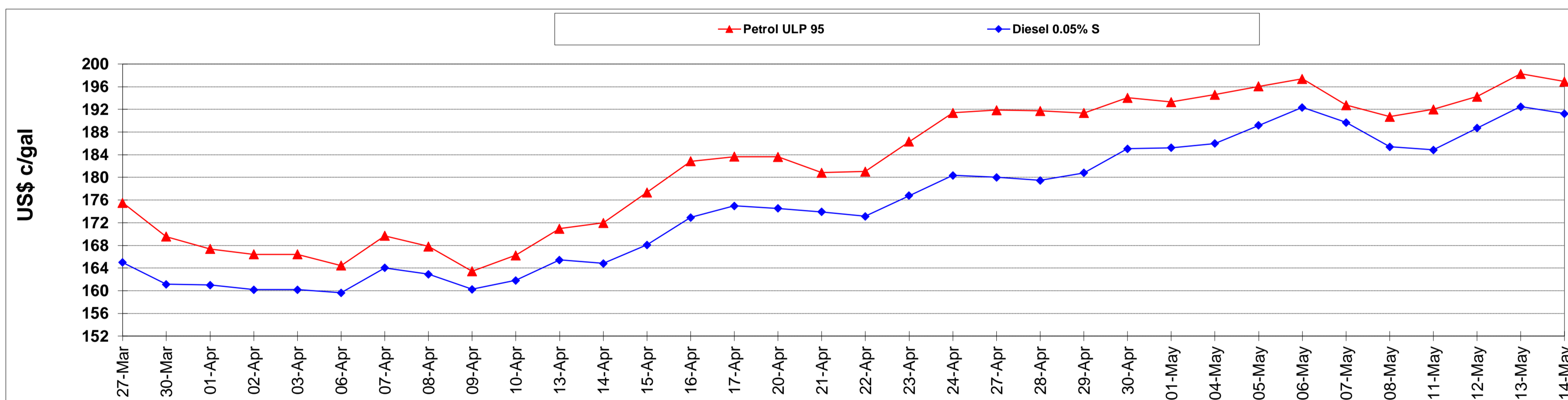
	PETROL 95	PETROL 93	DIESEL 0.05%	DIESEL 0.005%	ILL. PAR.
- MOVEMENT IN INTERNATIONAL PRODUCT PRICES	(51.501)	(55.742)	(59.167)	(55.508)	(52.952)
- MOVEMENT IN EXCHANGE RATE	3.583	3.509	3.495	3.509	3.415
AVERAGE UNIT OVER/(UNDER) RECOVERY 30/04/2015 - 14/05/2015	(47.918)	(52.233)	(55.671)	(51.999)	(49.537)

R/\$ EXCHANGE RATE - (R/\$ 11.9013 - 14/05/2015)

EXCHANGE RATE USED IN BASIC FUEL PRICE



INTERNATIONAL PRODUCT PRICES OF BASKET USED IN BASIC FUEL PRICE



BASIC FUEL PRICE IN SA CENTS PER LITRE

