

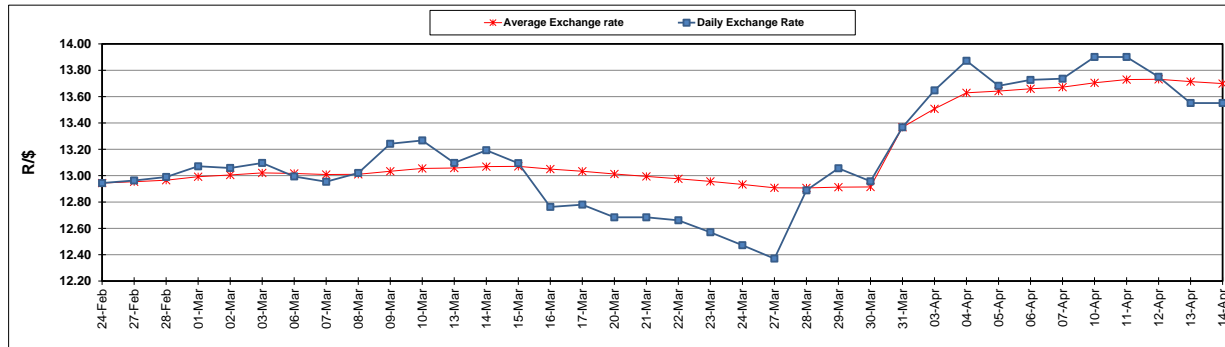
	PETROL 95 ULP	PETROL 93 ULP & LRP	DIESEL 0.05%	DIESEL 0.005%	ILL. PAR.
GAUTENG PUMP PRICE (SA c/l) AS FROM 05/04/2017	1 330.000	1 308.000	-	-	-
WHOLESALE PRICE (SA c/l) AS FROM 05/04/2017	-	-	1 150.330	1 152.730	702.088
SINGLE NATIONAL MAXIMUM RETAIL PRICE	-	-	-	-	901.000
BASIC FUEL PRICE - 14/04/2017 (SA c/l)	622.884	606.152	596.204	600.449	590.374
PRESS RELEASE CONTRIBUTION TO BFP 05/04/2017 - 14/04/2017 (SA c/l)	548.670	536.670	538.630	541.030	531.128
UNIT OVER/(UNDER) RECOVERY (SA c/l) - 14/04/2017	(74.214)	(69.482)	(57.574)	(59.419)	(59.246)
AVERAGE BASIC FUEL PRICE 31/03/2017 - 14/04/2017	619.635	602.801	588.085	592.143	585.268
AVERAGE UNIT OVER/(UNDER) RECOVERY 31/03/2017- 14/04/2017	(53.456)	(49.168)	(35.819)	(37.477)	(39.959)

### ANALYSIS MOVEMENT OF AVERAGE OVER/(UNDER) RECOVERY

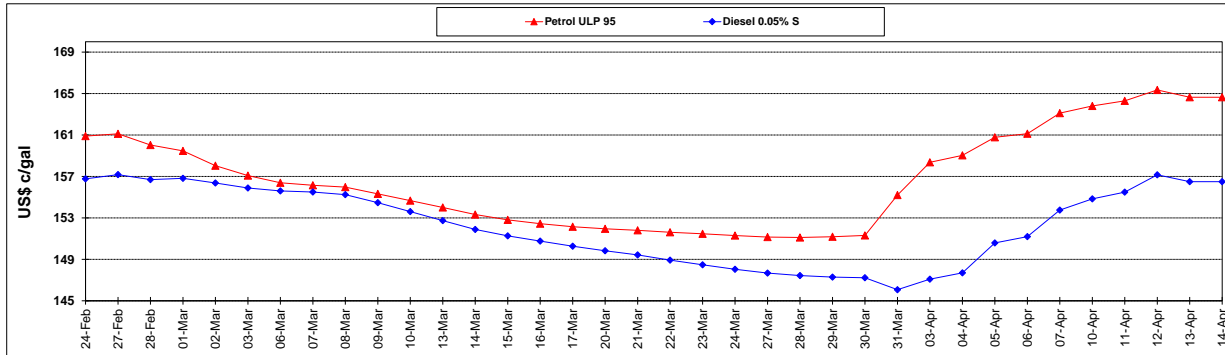
	PETROL 95	PETROL 93	DIESEL 0.05%	DIESEL 0.005%	ILL. PAR.
- MOVEMENT IN INTERNATIONAL PRODUCT PRICES	(17.993)	(14.668)	(2.162)	(3.588)	(6.462)
- MOVEMENT IN EXCHANGE RATE	(35.463)	(34.499)	(33.657)	(33.889)	(33.496)
AVERAGE UNIT OVER/(UNDER) RECOVERY 31/03/2017 - 14/04/2017	(53.456)	(49.168)	(35.819)	(37.477)	(39.959)

**R/\$ EXCHANGE RATE - (R/\$ 13.5515 - 14/04/2017)**

### EXCHANGE RATE USED IN BASIC FUEL PRICE



### INTERNATIONAL PRODUCT PRICES OF BASKET USED IN BASIC FUEL PRICE



### BASIC FUEL PRICE IN SA CENTS PER LITRE

