

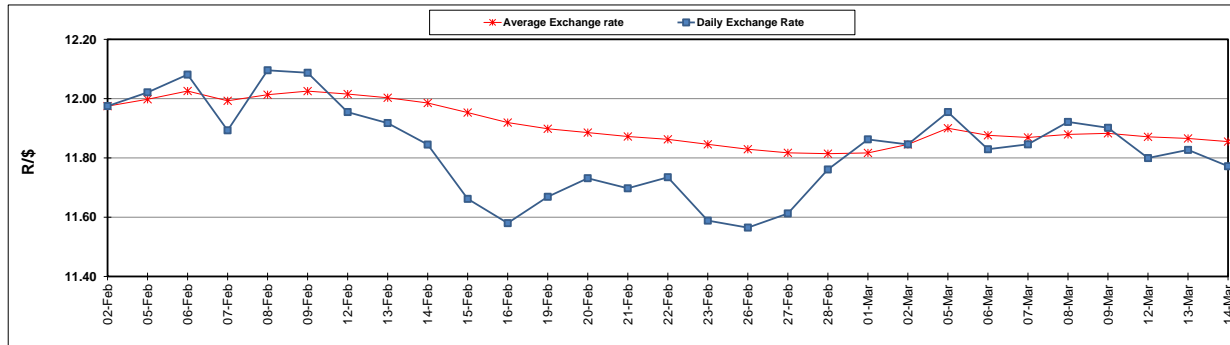
	PETROL 95 ULP	PETROL 93 ULP & LRP	DIESEL 0.05%	DIESEL 0.005%	ILL. PAR.
GAUTENG PUMP PRICE (SA c/l) AS FROM 07/03/2018	1 376.000	1 354.000	-	-	-
WHOLESALE PRICE (SA c/l) AS FROM 07/03/2018	-	-	1 209.630	1 215.030	795.388
SINGLE NATIONAL MAXIMUM RETAIL PRICE	-	-	-	-	1 026.000
BASIC FUEL PRICE - 14/03/2018 (SA c/l)	587.824	572.936	596.123	601.213	604.597
PRESS RELEASE CONTRIBUTION TO BFP 07/03/2018 - 14/03/2018 (SA c/l)	586.170	574.170	598.630	604.030	625.128
UNIT OVER/(UNDER) RECOVERY - 14/03/2018 (SA c/l)	(1.654)	1.234	2.507	2.817	20.531
AVERAGE BASIC FUEL PRICE 02/03/2018 - 14/03/2018	587.374	573.687	596.644	601.072	619.458
AVERAGE UNIT OVER/(UNDER) RECOVERY 02/03/2018 - 14/03/2018	10.796	12.483	17.653	17.625	13.337

ANALYSIS MOVEMENT OF AVERAGE OVER/(UNDER) RECOVERY

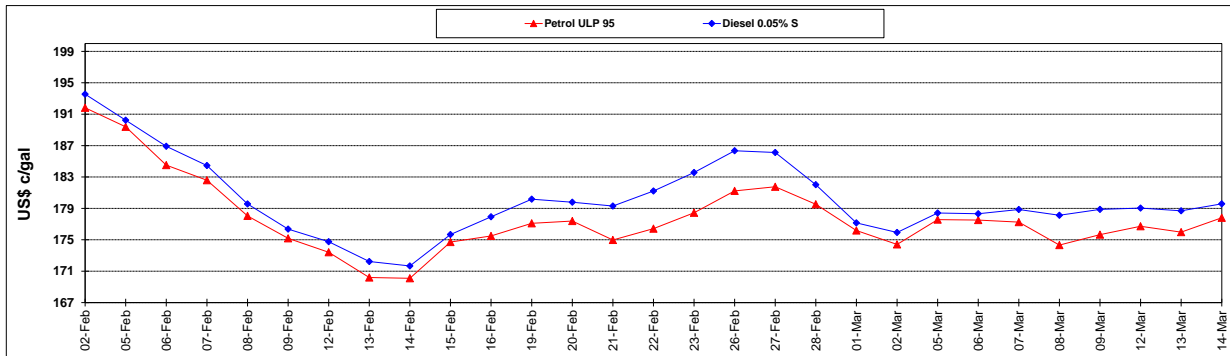
	PETROL 95	PETROL 93	DIESEL 0.05%	DIESEL 0.005%	ILL. PAR.
- MOVEMENT IN INTERNATIONAL PRODUCT PRICES	12.704	14.346	19.591	19.577	15.349
- MOVEMENT IN EXCHANGE RATE	(1.908)	(1.863)	(1.938)	(1.952)	(2.012)
AVERAGE UNIT OVER/(UNDER) RECOVERY 02/03/2018 - 14/03/2018	10.796	12.483	17.653	17.625	13.337

R/\$ EXCHANGE RATE - (R/\$11.7720 - 14/03/2018)

EXCHANGE RATE USED IN BASIC FUEL PRICE



INTERNATIONAL PRODUCT PRICES OF BASKET USED IN BASIC FUEL PRICE



BASIC FUEL PRICE IN SA CENTS PER LITRE

