

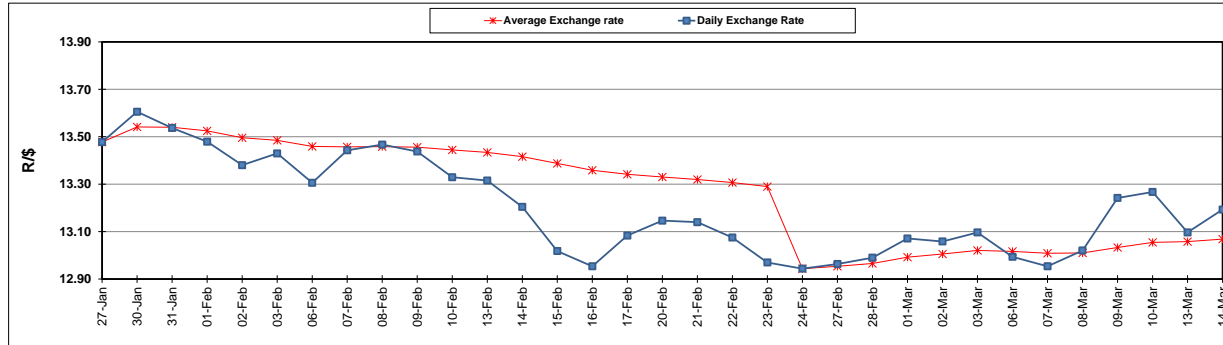
	PETROL 95 ULP	PETROL 93 ULP & LRP	DIESEL 0.05%	DIESEL 0.005%	ILL. PAR.
GAUTENG PUMP PRICE (SA c/l) AS FROM 01/03/2017	1 354.000	1 330.000	-	-	-
WHOLESALE PRICE (SA c/l) AS FROM 01/03/2017	-	-	1 160.830	1 163.230	750.588
SINGLE NATIONAL MAXIMUM RETAIL PRICE	-	-	-	-	966.000
BASIC FUEL PRICE - 14/03/2017 (SA c/l)	540.288	527.438	531.009	534.022	522.833
PRESS RELEASE CONTRIBUTION TO BFP 01/03/2017 - 14/03/2017 (SA c/l)	612.870	598.870	588.630	591.030	583.128
UNIT OVER/(UNDER) RECOVERY (SA c/l) - 14/03/2017	72.582	71.432	57.621	57.008	60.295
AVERAGE BASIC FUEL PRICE 24/02/2017 - 14/03/2017	563.668	551.642	561.428	564.348	553.413
AVERAGE UNIT OVER/(UNDER) RECOVERY 24/02/2017- 14/03/2017	51.048	49.074	27.663	27.144	31.561

ANALYSIS MOVEMENT OF AVERAGE OVER/(UNDER) RECOVERY

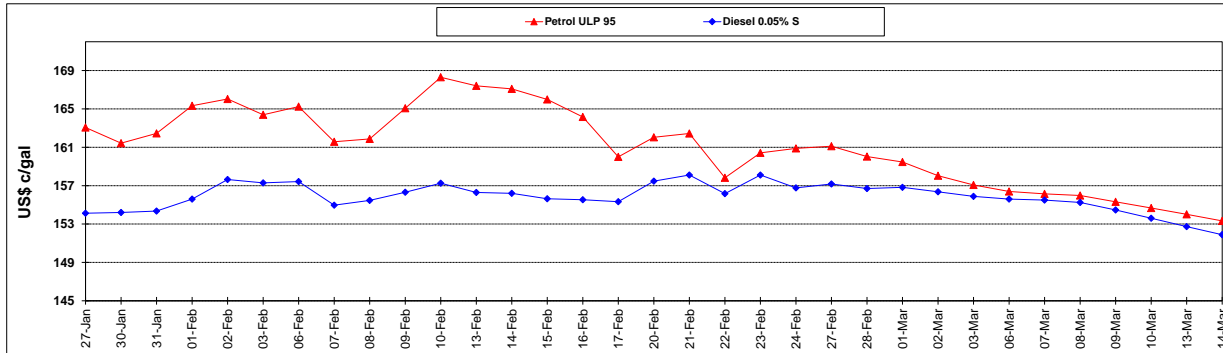
	PETROL 95	PETROL 93	DIESEL 0.05%	DIESEL 0.005%	ILL. PAR.
- MOVEMENT IN INTERNATIONAL PRODUCT PRICES	55.296	53.232	31.896	31.398	35.732
- MOVEMENT IN EXCHANGE RATE	(4.248)	(4.158)	(4.232)	(4.254)	(4.171)
AVERAGE UNIT OVER/(UNDER) RECOVERY 24/02/2017 - 14/03/2017	51.048	49.074	27.663	27.144	31.561

R/\$ EXCHANGE RATE - (R/\$ 13.1930 - 14/03/2017)

EXCHANGE RATE USED IN BASIC FUEL PRICE



INTERNATIONAL PRODUCT PRICES OF BASKET USED IN BASIC FUEL PRICE



BASIC FUEL PRICE IN SA CENTS PER LITRE

