

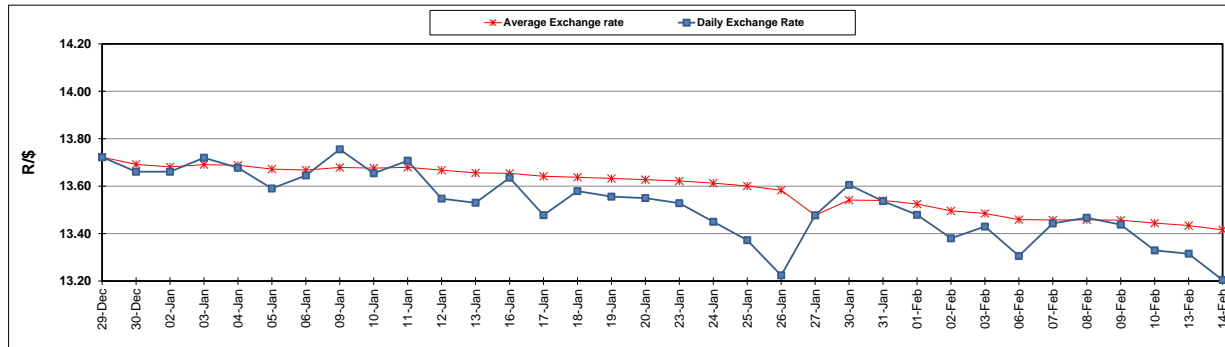
	PETROL 95 ULP	PETROL 93 ULP & LRP	DIESEL 0.05%	DIESEL 0.005%	ILL. PAR.
GAUTENG PUMP PRICE (SA c/l) AS FROM 01/02/2017	1 362.000	1 338.000	-	-	-
WHOLESALE PRICE (SA c/l) AS FROM 01/02/2017	-	-	1 162.830	1 165.230	758.588
SINGLE NATIONAL MAXIMUM RETAIL PRICE	-	-	-	-	976.000
BASIC FUEL PRICE - 14/02/2017 (SA c/l)	618.210	603.069	582.902	585.624	577.929
PRESS RELEASE CONTRIBUTION TO BFP 01/02/2017 - 14/02/2017 (SA c/l)	620.870	606.870	590.630	593.030	591.128
UNIT OVER/(UNDER) RECOVERY (SA c/l) - 14/02/2017	2.660	3.801	7.728	7.406	13.199
AVERAGE BASIC FUEL PRICE 27/01/2017 - 14/02/2017	618.032	602.708	590.134	592.455	583.994
AVERAGE UNIT OVER/(UNDER) RECOVERY 27/01/2017- 14/02/2017	(3.854)	(2.530)	(4.350)	(4.272)	3.211

ANALYSIS MOVEMENT OF AVERAGE OVER/(UNDER) RECOVERY

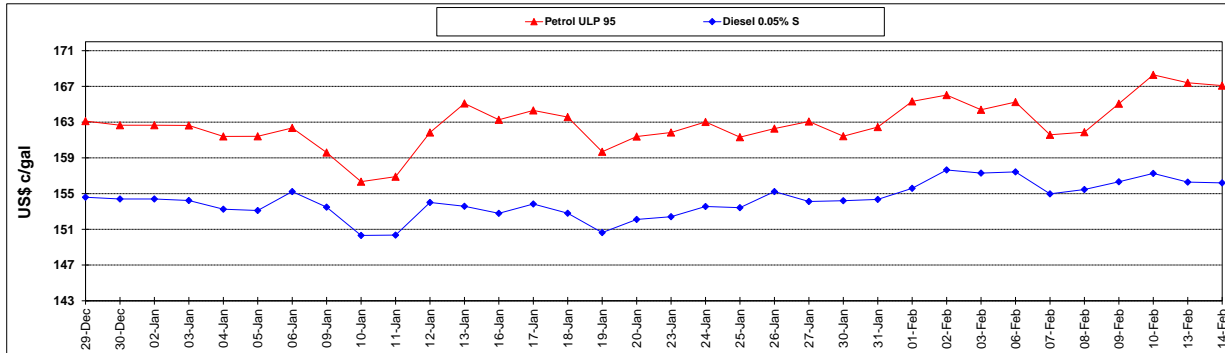
	PETROL 95	PETROL 93	DIESEL 0.05%	DIESEL 0.005%	ILL. PAR.
- MOVEMENT IN INTERNATIONAL PRODUCT PRICES	(11.538)	(10.023)	(11.687)	(11.637)	(4.050)
- MOVEMENT IN EXCHANGE RATE	7.684	7.493	7.337	7.366	7.261
AVERAGE UNIT OVER/(UNDER) RECOVERY 27/01/2017 - 14/02/2017	(3.854)	(2.530)	(4.350)	(4.272)	3.211

R/\$ EXCHANGE RATE - (R/\$ 13.2043- 14/02/2017)

EXCHANGE RATE USED IN BASIC FUEL PRICE



INTERNATIONAL PRODUCT PRICES OF BASKET USED IN BASIC FUEL PRICE



BASIC FUEL PRICE IN SA CENTS PER LITRE

