

UPDATE OF THE BASIC FUEL PRICE

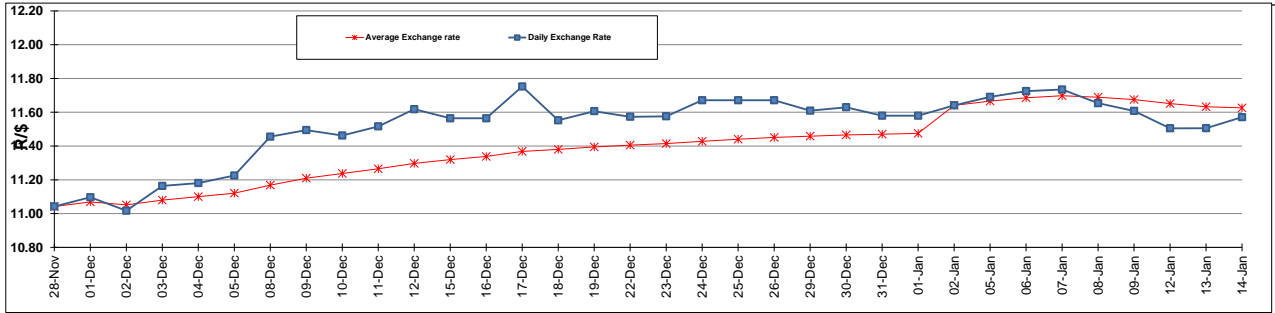
	PETROL 95 ULP	PETROL 93 ULP & LRP	DIESEL 0.05%	DIESEL 0.005%	ILL. PAR.
GAUTENG PUMP PRICE (SA c/l) AS FROM 07/01/2015	1,124.000	1,102.000	-	-	-
WHOLESALE PRICE (SA c/l) AS FROM 07/01/2015	-	-	1,028.090	1,032.490	747.928
SINGLE NATIONAL MAXIMUM RETAIL PRICE	-	-	-	-	969.000
BASIC FUEL PRICE - 14/01/2015 (SA c/l)	438.169	425.543	476.369	480.119	485.795
PRESS RELEASE CONTRIBUTION TO BFP 07/01/2015 - 14/01/2015 (SA c/l)	533.250	521.250	582.630	587.030	593.128
UNIT OVER/(UNDER) RECOVERY (SA c/l) - 14/01/2015	95.081	95.707	106.261	106.911	107.333
AVERAGE BASIC FUEL PRICE 02/01/2015 - 14/01/2015	465.060	453.046	508.468	512.512	515.183
AVERAGE UNIT OVER/(UNDER) RECOVERY 02/01/2015 - 14/01/2015	109.190	110.537	108.829	109.518	113.945

ANALYSIS MOVEMENT OF AVERAGE OVER/(UNDER) RECOVERY

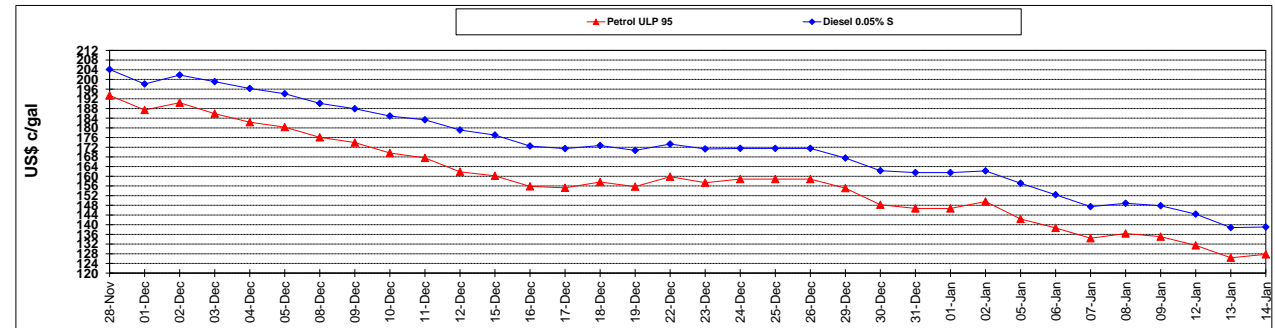
	PETROL 95	PETROL 93	DIESEL 0.05%	DIESEL 0.005%	ILL. PAR.
- MOVEMENT IN INTERNATIONAL PRODUCT PRICES	115.238	116.429	115.442	116.183	120.645
- MOVEMENT IN EXCHANGE RATE	(6.048)	(5.892)	(6.613)	(6.665)	(6.700)
AVERAGE UNIT OVER/(UNDER) RECOVERY 02/01/2015 - 14/01/2015	109.190	110.537	108.829	109.518	113.945

R/\$ EXCHANGE RATE - (R/\$ 11.5711 - 14/01/2015)

EXCHANGE RATE USED IN BASIC FUEL PRICE



INTERNATIONAL PRODUCT PRICES OF BASKET USED IN BASIC FUEL PRICE



BASIC FUEL PRICE IN SA CENTS PER LITRE

