

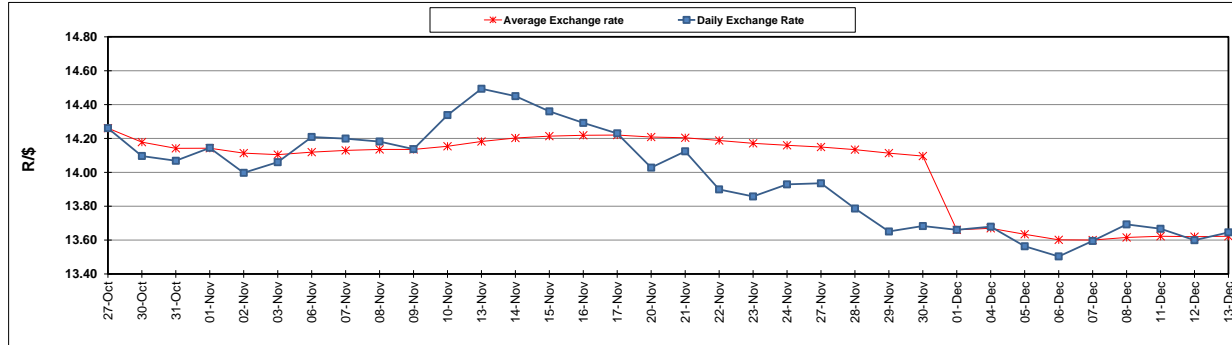
	PETROL 95 ULP	PETROL 93 ULP & LRP	DIESEL 0.05%	DIESEL 0.005%	ILL. PAR.
GAUTENG PUMP PRICE (SA c/l) AS FROM 07/12/2017	1 476.000	1 449.000	-	-	-
WHOLESALE PRICE (SA c/l) AS FROM 07/12/2017	-	-	1 295.630	1 302.030	865.388
SINGLE NATIONAL MAXIMUM RETAIL PRICE	-	-	-	-	1 119.000
BASIC FUEL PRICE - 13/12/2017 (SA c/l)	658.278	645.501	673.678	677.924	675.362
PRESS RELEASE CONTRIBUTION TO BFP 05/12/2017 - 13/12/2017 (SA c/l)	686.170	669.170	684.630	691.030	695.128
UNIT OVER/(UNDER) RECOVERY - 13/12/2017 (SA c/l)	27.892	23.669	10.952	13.106	19.766
AVERAGE BASIC FUEL PRICE 01/12/2017 - 13/12/2017	657.635	644.345	665.583	669.400	668.883
AVERAGE UNIT OVER/(UNDER) RECOVERY 01/12/2017 - 13/12/2017	6.169	2.458	(1.286)	2.297	1.578

ANALYSIS MOVEMENT OF AVERAGE OVER/(UNDER) RECOVERY

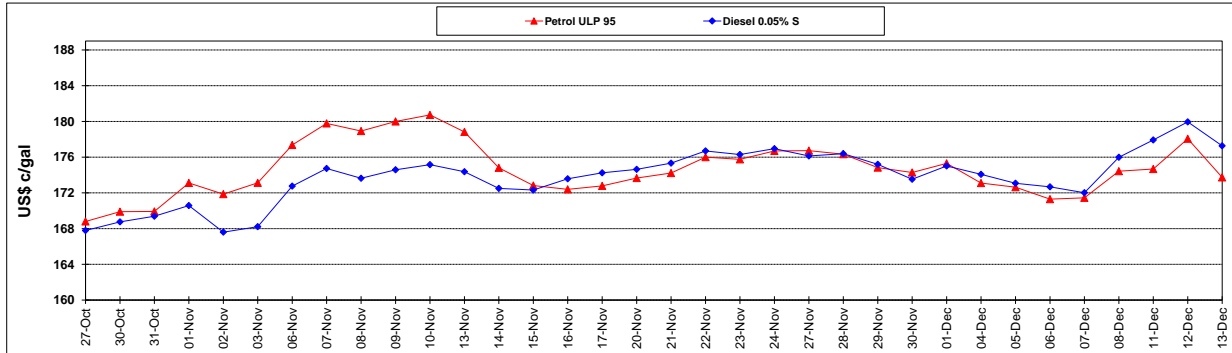
	PETROL 95	PETROL 93	DIESEL 0.05%	DIESEL 0.005%	ILL. PAR.
- MOVEMENT IN INTERNATIONAL PRODUCT PRICES	(16.695)	(19.943)	(24.425)	(20.975)	(21.676)
- MOVEMENT IN EXCHANGE RATE	22.863	22.401	23.139	23.272	23.254
AVERAGE UNIT OVER/(UNDER) RECOVERY 01/12/2017 - 13/12/2017	6.169	2.458	(1.286)	2.297	1.578

R/\$ EXCHANGE RATE - (R/\$ 13.6453 - 13/12/2017)

EXCHANGE RATE USED IN BASIC FUEL PRICE



INTERNATIONAL PRODUCT PRICES OF BASKET USED IN BASIC FUEL PRICE



BASIC FUEL PRICE IN SA CENTS PER LITRE

