

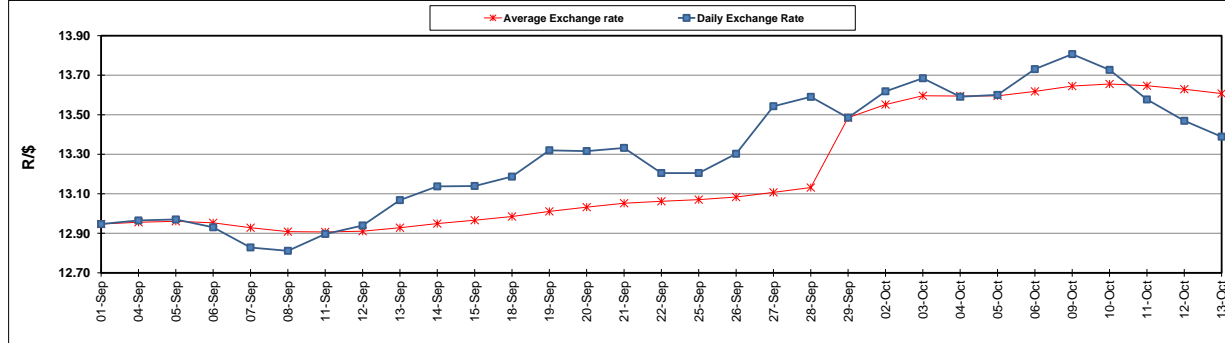
	PETROL 95 ULP	PETROL 93 ULP & LRP	DIESEL 0.05%	DIESEL 0.005%	ILL. PAR.
GAUTENG PUMP PRICE (SA c/l) AS FROM 04/10/2017	1 401.000	1 374.000	-	-	-
WHOLESALE PRICE (SA c/l) AS FROM 04/10/2017	-	-	1 212.330	1 217.730	771.088
SINGLE NATIONAL MAXIMUM RETAIL PRICE	-	-	-	-	992.000
BASIC FUEL PRICE - 13/10/2017 (SA c/l)	606.749	590.559	611.803	620.758	602.896
PRESS RELEASE CONTRIBUTION TO BFP 04/10/2017 - 13/10/2017 (SA c/l)	615.070	598.070	600.630	606.030	600.128
UNIT OVER/(UNDER) RECOVERY (SA c/l) - 13/10/2017	8.321	7.511	(11.173)	(14.728)	(2.768)
AVERAGE BASIC FUEL PRICE 29/09/2017 - 13/10/2017	608.903	592.576	612.305	622.151	608.529
AVERAGE UNIT OVER/(UNDER) RECOVERY 29/09/2017 - 13/10/2017	(1.742)	(1.324)	(23.130)	(27.575)	(19.037)

ANALYSIS MOVEMENT OF AVERAGE OVER/(UNDER) RECOVERY

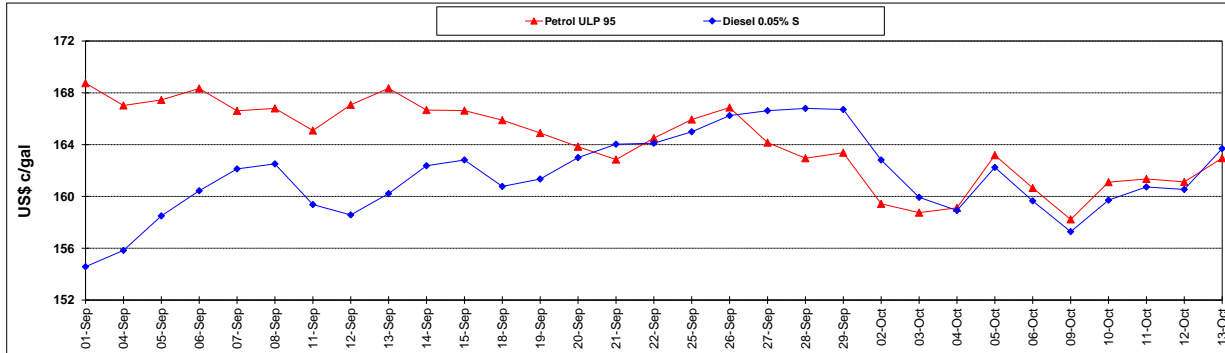
	PETROL 95	PETROL 93	DIESEL 0.05%	DIESEL 0.005%	ILL. PAR.
- MOVEMENT IN INTERNATIONAL PRODUCT PRICES	19.536	19.383	(1.733)	(5.835)	2.228
- MOVEMENT IN EXCHANGE RATE	(21.278)	(20.707)	(21.397)	(21.741)	(21.265)
AVERAGE UNIT OVER/(UNDER) RECOVERY 29/09/2017 - 13/10/2017	(1.742)	(1.324)	(23.130)	(27.575)	(19.037)

R/\$ EXCHANGE RATE - (R/\$ 13.3888 - 13/10/2017)

EXCHANGE RATE USED IN BASIC FUEL PRICE



INTERNATIONAL PRODUCT PRICES OF BASKET USED IN BASIC FUEL PRICE



BASIC FUEL PRICE IN SA CENTS PER LITRE

