

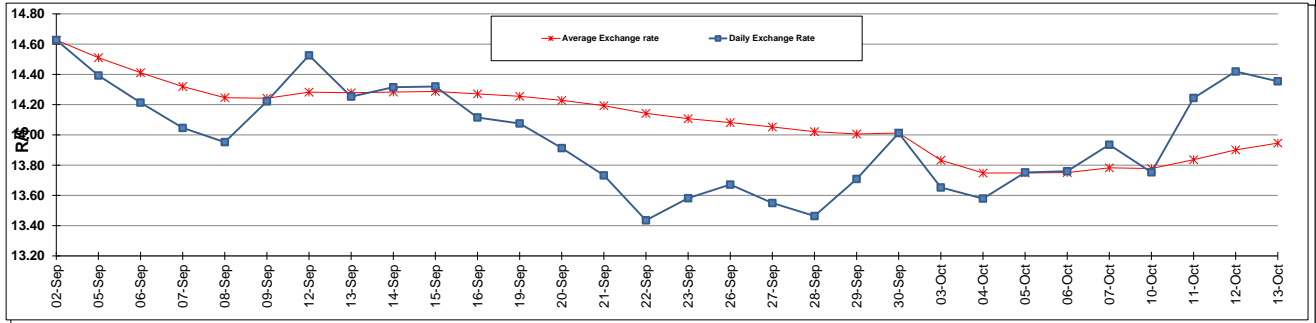
	PETROL 95 ULP	PETROL 93 ULP & LRP	DIESEL 0.05%	DIESEL 0.005%	ILL. PAR.
GAUTENG PUMP PRICE (SA c/l) AS FROM 05/10/2016	1 260.000	1 234.000	-	-	-
WHOLESALE PRICE (SA c/l) AS FROM 05/10/2016	-	-	1 071.870	1 075.270	669.628
SINGLE NATIONAL MAXIMUM RETAIL PRICE	-	-	-	-	858.000
BASIC FUEL PRICE - 13/10/2016 (SA c/l)	589.151	573.834	585.175	588.308	580.265
PRESS RELEASE CONTRIBUTION TO BFP 05/10/2016 - 13/10/2016 (SA c/l)	538.970	522.970	505.630	509.030	508.128
UNIT OVER/(UNDER) RECOVERY (SA c/l) - 13/10/2016	(50.181)	(50.864)	(79.545)	(79.278)	(72.137)
AVERAGE BASIC FUEL PRICE 30/09/2016 - 13/10/2016	571.575	557.378	562.458	565.505	559.002
AVERAGE UNIT OVER/(UNDER) RECOVERY 30/09/2016 - 13/10/2016	(45.505)	(47.608)	(63.728)	(63.375)	(57.474)

ANALYSIS MOVEMENT OF AVERAGE OVER/(UNDER) RECOVERY

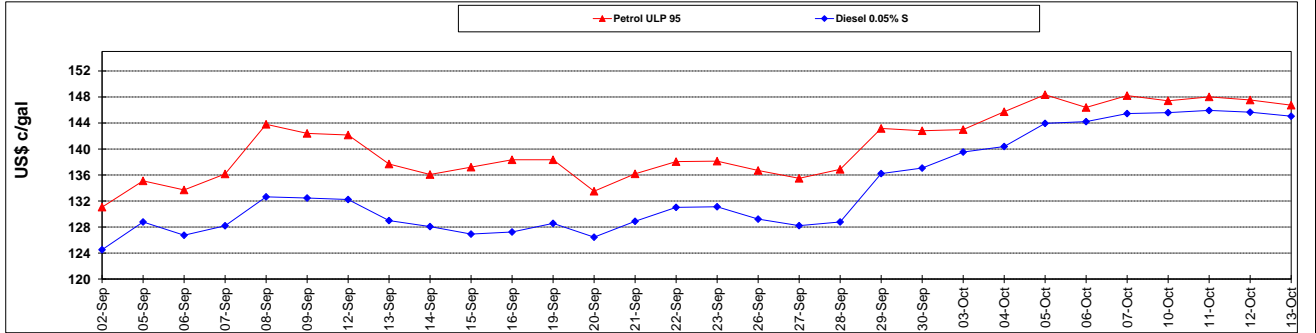
	PETROL 95	PETROL 93	DIESEL 0.05%	DIESEL 0.005%	ILL. PAR.
- MOVEMENT IN INTERNATIONAL PRODUCT PRICES	(47.948)	(49.990)	(66.132)	(65.792)	(59.863)
- MOVEMENT IN EXCHANGE RATE	2.443	2.382	2.404	2.417	2.389
AVERAGE UNIT OVER/(UNDER) RECOVERY 30/09/2016 - 13/10/2016	(45.505)	(47.608)	(63.728)	(63.375)	(57.474)

R/\$ EXCHANGE RATE - (R/\$ 14.3543- 13/10/2016)

EXCHANGE RATE USED IN BASIC FUEL PRICE



INTERNATIONAL PRODUCT PRICES OF BASKET USED IN BASIC FUEL PRICE



BASIC FUEL PRICE IN SA CENTS PER LITRE

