

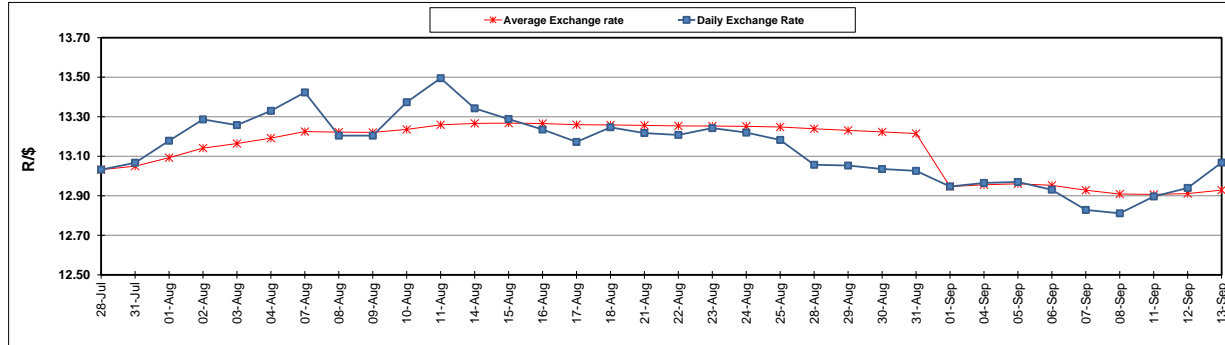
	PETROL 95 ULP	PETROL 93 ULP & LRP	DIESEL 0.05%	DIESEL 0.005%	ILL. PAR.
GAUTENG PUMP PRICE (SA c/l) AS FROM 06/09/2017	1 372.000	1 349.000	-	-	-
WHOLESALE PRICE (SA c/l) AS FROM 06/09/2017	-	-	1 170.330	1 175.730	732.088
SINGLE NATIONAL MAXIMUM RETAIL PRICE	-	-	-	-	941.000
BASIC FUEL PRICE - 13/09/2017 (SA c/l)	611.807	594.066	585.977	591.520	580.715
PRESS RELEASE CONTRIBUTION TO BFP 06/09/2017 - 13/09/2017 (SA c/l)	586.070	573.070	558.630	564.030	561.128
UNIT OVER/(UNDER) RECOVERY (SA c/l) - 13/09/2017	(25.737)	(20.996)	(27.347)	(27.490)	(19.587)
AVERAGE BASIC FUEL PRICE 01/09/2017 - 13/09/2017	601.662	584.979	576.038	581.702	573.276
AVERAGE UNIT OVER/(UNDER) RECOVERY 01/09/2017- 13/09/2017	(36.392)	(32.709)	(32.074)	(32.338)	(28.481)

ANALYSIS MOVEMENT OF AVERAGE OVER/(UNDER) RECOVERY

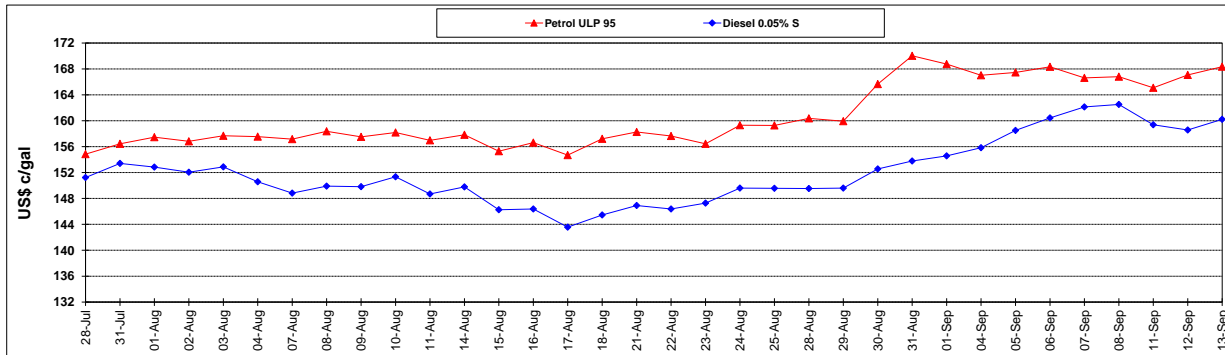
	PETROL 95	PETROL 93	DIESEL 0.05%	DIESEL 0.005%	ILL. PAR.
- MOVEMENT IN INTERNATIONAL PRODUCT PRICES	(49.734)	(45.681)	(44.849)	(45.239)	(41.194)
- MOVEMENT IN EXCHANGE RATE	13.342	12.972	12.774	12.900	12.713
AVERAGE UNIT OVER/(UNDER) RECOVERY 01/09/2017 - 13/09/2017	(36.392)	(32.709)	(32.074)	(32.338)	(28.481)

R/\$ EXCHANGE RATE - (R/\$13.0680 - 13/09/2017)

EXCHANGE RATE USED IN BASIC FUEL PRICE



INTERNATIONAL PRODUCT PRICES OF BASKET USED IN BASIC FUEL PRICE



BASIC FUEL PRICE IN SA CENTS PER LITRE

