

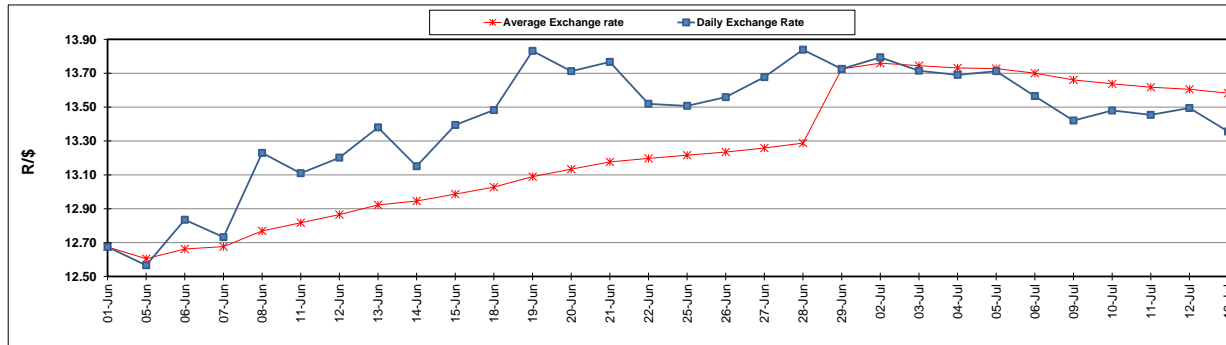
	PETROL 95 ULP	PETROL 93 ULP & LRP	DIESEL 0.05%	DIESEL 0.005%	ILL. PAR.
GAUTENG PUMP PRICE (SA c/l) AS FROM 04/07/2018	1 602.000	1 581.000	-	-	-
WHOLESALE PRICE (SA c/l) AS FROM 04/07/2018	-	-	1 444.830	1 449.230	949.088
SINGLE NATIONAL MAXIMUM RETAIL PRICE	-	-	-	-	1 228.000
BASIC FUEL PRICE - 13/07/2018 (SA c/l)	731.932	722.313	746.323	751.732	759.880
PRESS RELEASE CONTRIBUTION TO BFP 04/07/2018 - 13/07/2018 (SA c/l)	750.070	739.070	771.630	776.030	776.128
UNIT OVER/(UNDER) RECOVERY - 13/07/2018 (SA c/l)	18.138	16.757	25.307	24.298	16.248
AVERAGE BASIC FUEL PRICE 29/06/2018 - 13/07/2018	761.146	750.926	777.675	782.768	792.267
AVERAGE UNIT OVER/(UNDER) RECOVERY 29/06/2018 - 13/07/2018	(17.349)	(19.220)	(13.135)	(13.283)	(22.139)

ANALYSIS MOVEMENT OF AVERAGE OVER/(UNDER) RECOVERY

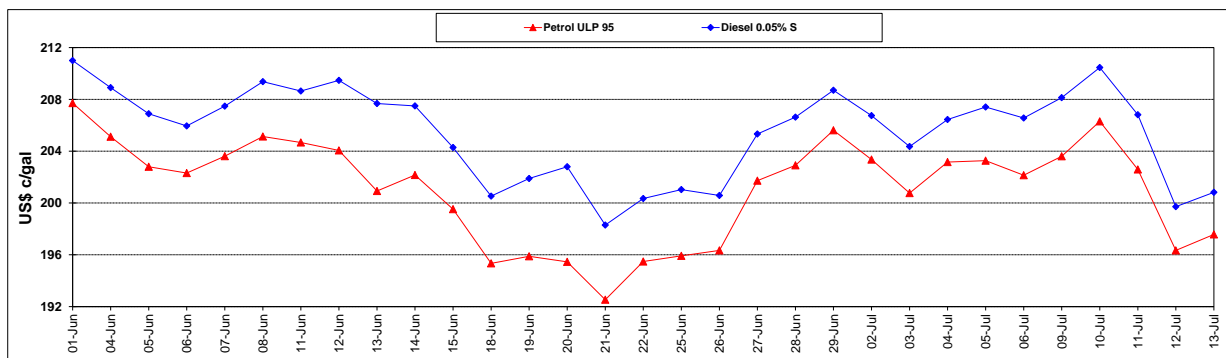
	PETROL 95	PETROL 93	DIESEL 0.05%	DIESEL 0.005%	ILL. PAR.
- MOVEMENT IN INTERNATIONAL PRODUCT PRICES	(0.806)	(2.899)	3.766	3.730	(4.920)
- MOVEMENT IN EXCHANGE RATE	(16.543)	(16.321)	(16.902)	(17.013)	(17.219)
AVERAGE UNIT OVER/(UNDER) RECOVERY 29/06/2018 - 13/07/2018	(17.349)	(19.220)	(13.135)	(13.283)	(22.139)

R/\$ EXCHANGE RATE - (R/\$13.3560 - 13/07/2018)

EXCHANGE RATE USED IN BASIC FUEL PRICE



INTERNATIONAL PRODUCT PRICES OF BASKET USED IN BASIC FUEL PRICE



BASIC FUEL PRICE IN SA CENTS PER LITRE

