

UPDATE OF THE BASIC FUEL PRICE

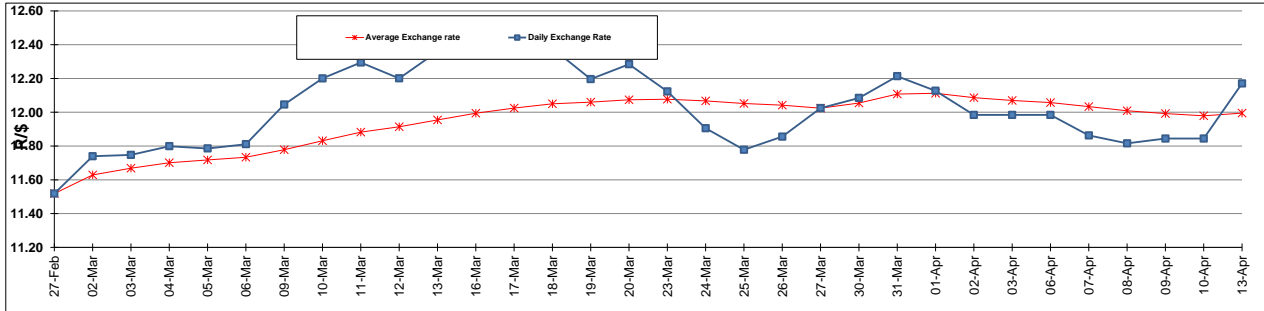
	PETROL 95 ULP	PETROL 93 ULP & LRP	DIESEL 0.05%	DIESEL 0.005%	ILL. PAR.
GAUTENG PUMP PRICE (SA c/l) AS FROM 03/04/2015	1,289.000	1,261.000	-	-	-
WHOLESALE PRICE (SA c/l) AS FROM 03/04/2015	-	-	1,122.790	1,129.190	743.828
SINGLE NATIONAL MAXIMUM RETAIL PRICE	-	-	-	-	957.000
BASIC FUEL PRICE - 13/04/2015 (SA c/l)	594.491	583.260	580.148	587.937	572.407
PRESS RELEASE CONTRIBUTION TO BFP 13/04/2015 - 13/04/2015 (SA c/l)	615.650	597.650	594.630	601.030	586.128
UNIT OVER/(UNDER) RECOVERY (SA c/l) - 13/04/2015	21.159	14.390	14.482	13.093	13.721
AVERAGE BASIC FUEL PRICE 27/03/2015 - 13/04/2015	577.704	563.179	561.979	568.247	557.248
AVERAGE UNIT OVER/(UNDER) RECOVERY 27/03/2015 - 13/04/2015	18.096	16.121	22.651	22.283	23.380

ANALYSIS MOVEMENT OF AVERAGE OVER/(UNDER) RECOVERY

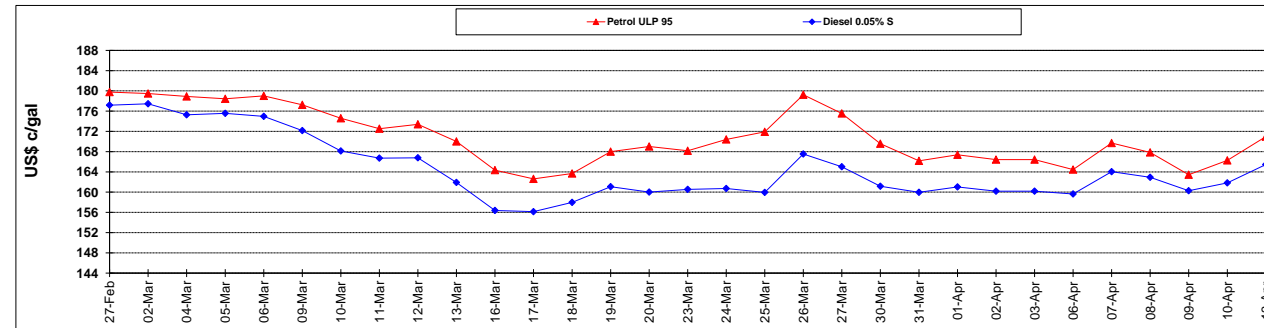
	PETROL 95	PETROL 93	DIESEL 0.05%	DIESEL 0.005%	ILL. PAR.
- MOVEMENT IN INTERNATIONAL PRODUCT PRICES	15.818	13.900	20.435	20.042	21.183
- MOVEMENT IN EXCHANGE RATE	2.278	2.221	2.216	2.241	2.197
AVERAGE UNIT OVER/(UNDER) RECOVERY 27/03/2015 - 13/04/2015	18.096	16.121	22.651	22.283	23.380

R/\$ EXCHANGE RATE - (R/\$ 12.1707 - 13/04/2015)

EXCHANGE RATE USED IN BASIC FUEL PRICE



INTERNATIONAL PRODUCT PRICES OF BASKET USED IN BASIC FUEL PRICE



BASIC FUEL PRICE IN SA CENTS PER LITRE

