

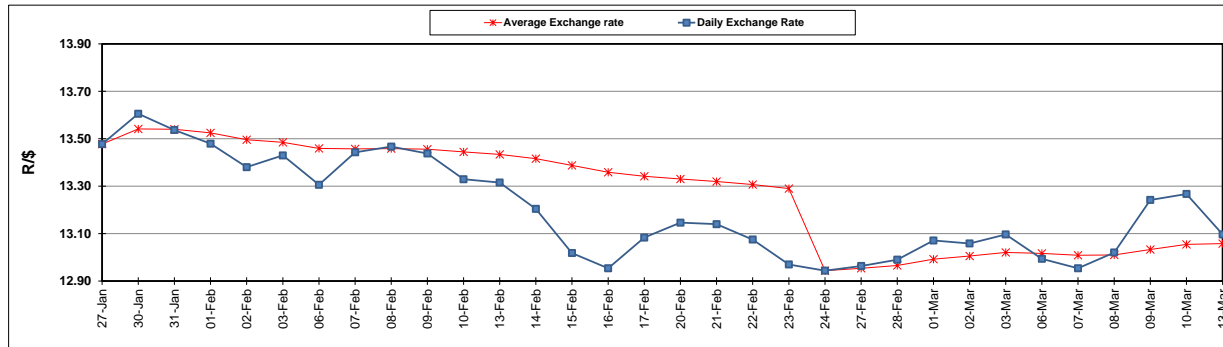
	PETROL 95 ULP	PETROL 93 ULP & LRP	DIESEL 0.05%	DIESEL 0.005%	ILL. PAR.
GAUTENG PUMP PRICE (SA c/l) AS FROM 01/03/2017	1 354.000	1 330.000	-	-	-
WHOLESALE PRICE (SA c/l) AS FROM 01/03/2017	-	-	1 160.830	1 163.230	750.588
SINGLE NATIONAL MAXIMUM RETAIL PRICE	-	-	-	-	966.000
BASIC FUEL PRICE - 13/03/2017 (SA c/l)	541.779	526.932	532.117	534.672	524.675
PRESS RELEASE CONTRIBUTION TO BFP 01/03/2017 - 13/03/2017 (SA c/l)	612.870	598.870	588.630	591.030	583.128
UNIT OVER/(UNDER) RECOVERY (SA c/l) - 13/03/2017	71.091	71.938	56.513	56.358	58.453
AVERAGE BASIC FUEL PRICE 24/02/2017 - 13/03/2017	565.616	553.659	563.963	566.875	555.961
AVERAGE UNIT OVER/(UNDER) RECOVERY 24/02/2017- 13/03/2017	49.254	47.211	25.167	24.655	29.167

### ANALYSIS MOVEMENT OF AVERAGE OVER/(UNDER) RECOVERY

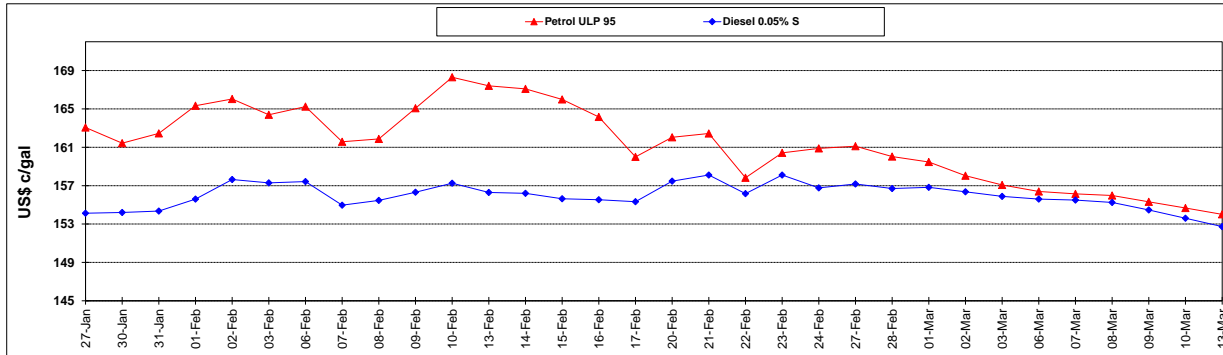
	PETROL 95	PETROL 93	DIESEL 0.05%	DIESEL 0.005%	ILL. PAR.
- MOVEMENT IN INTERNATIONAL PRODUCT PRICES	53.070	50.946	28.972	28.480	32.918
- MOVEMENT IN EXCHANGE RATE	(3.816)	(3.735)	(3.805)	(3.825)	(3.751)
AVERAGE UNIT OVER/(UNDER) RECOVERY 24/02/2017 - 13/03/2017	49.254	47.211	25.167	24.655	29.167

R/\$ EXCHANGE RATE - (R/\$ 13.0968 - 13/03/2017)

### EXCHANGE RATE USED IN BASIC FUEL PRICE



### INTERNATIONAL PRODUCT PRICES OF BASKET USED IN BASIC FUEL PRICE



### BASIC FUEL PRICE IN SA CENTS PER LITRE

