

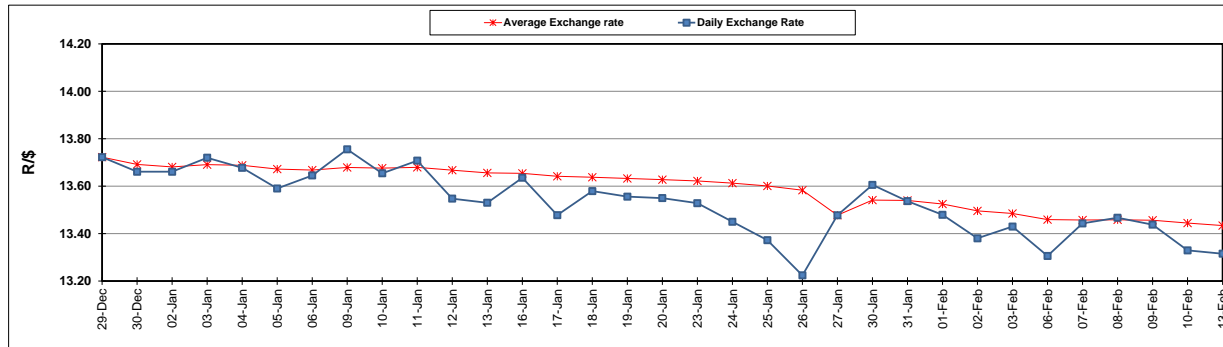
	PETROL 95 ULP	PETROL 93 ULP & LRP	DIESEL 0.05%	DIESEL 0.005%	ILL. PAR.
GAUTENG PUMP PRICE (SA c/l) AS FROM 01/02/2017	1 362.000	1 338.000	-	-	-
WHOLESALE PRICE (SA c/l) AS FROM 01/02/2017	-	-	1 162.830	1 165.230	758.588
SINGLE NATIONAL MAXIMUM RETAIL PRICE	-	-	-	-	976.000
BASIC FUEL PRICE - 13/02/2017 (SA c/l)	624.485	609.215	588.018	590.696	582.871
PRESS RELEASE CONTRIBUTION TO BFP 01/02/2017 - 13/02/2017 (SA c/l)	620.870	606.870	590.630	593.030	591.128
UNIT OVER/(UNDER) RECOVERY (SA c/l) - 13/02/2017	(3.615)	(2.345)	2.612	2.334	8.257
AVERAGE BASIC FUEL PRICE 27/01/2017 - 13/02/2017	618.017	602.678	590.736	593.025	584.499
AVERAGE UNIT OVER/(UNDER) RECOVERY 27/01/2017- 13/02/2017	(4.397)	(3.058)	(5.356)	(5.245)	2.379

### ANALYSIS MOVEMENT OF AVERAGE OVER/(UNDER) RECOVERY

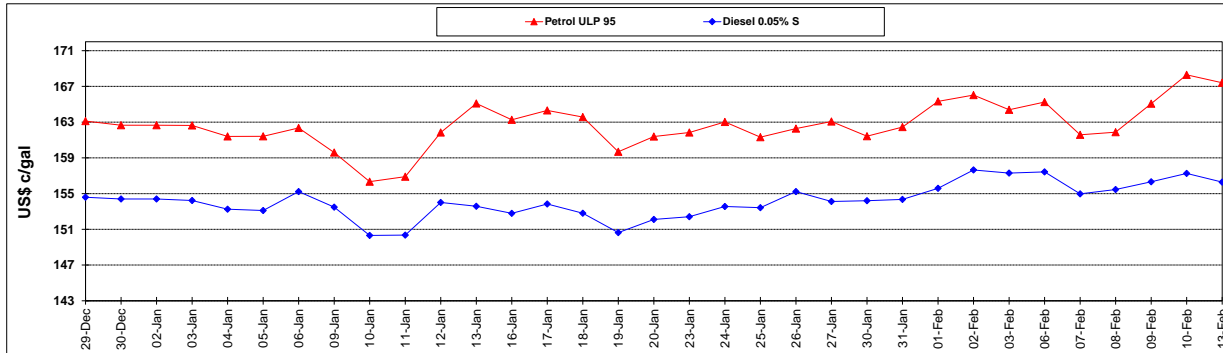
	PETROL 95	PETROL 93	DIESEL 0.05%	DIESEL 0.005%	ILL. PAR.
- MOVEMENT IN INTERNATIONAL PRODUCT PRICES	(11.256)	(9.747)	(11.912)	(11.827)	(4.108)
- MOVEMENT IN EXCHANGE RATE	6.859	6.689	6.556	6.582	6.487
AVERAGE UNIT OVER/(UNDER) RECOVERY 27/01/2017 - 13/02/2017	(4.397)	(3.058)	(5.356)	(5.245)	2.379

### R/\$ EXCHANGE RATE - (R/\$ 13.3153- 13/02/2017)

#### EXCHANGE RATE USED IN BASIC FUEL PRICE



#### INTERNATIONAL PRODUCT PRICES OF BASKET USED IN BASIC FUEL PRICE



#### BASIC FUEL PRICE IN SA CENTS PER LITRE

