

UPDATE OF THE BASIC FUEL PRICE

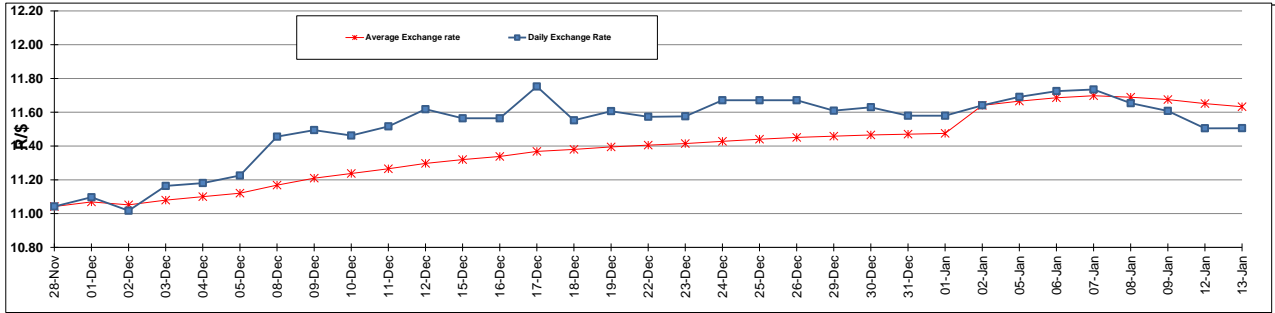
	PETROL 95 ULP	PETROL 93 ULP & LRP	DIESEL 0.05%	DIESEL 0.005%	ILL. PAR.
GAUTENG PUMP PRICE (SA c/l) AS FROM 07/01/2015	1,124.000	1,102.000	-	-	-
WHOLESALE PRICE (SA c/l) AS FROM 07/01/2015	-	-	1,028.090	1,032.490	747.928
SINGLE NATIONAL MAXIMUM RETAIL PRICE	-	-	-	-	969.000
BASIC FUEL PRICE - 13/01/2015 (SA c/l)	431.453	420.257	473.036	477.159	483.069
PRESS RELEASE CONTRIBUTION TO BFP 07/01/2015 - 13/01/2015 (SA c/l)	533.250	521.250	582.630	587.030	593.128
UNIT OVER/(UNDER) RECOVERY (SA c/l) - 13/01/2015	101.797	100.993	109.594	109.871	110.059
AVERAGE BASIC FUEL PRICE 02/01/2015 - 13/01/2015	468.421	456.484	512.480	516.561	518.857
AVERAGE UNIT OVER/(UNDER) RECOVERY 02/01/2015 - 13/01/2015	110.954	112.391	109.150	109.844	114.771

ANALYSIS MOVEMENT OF AVERAGE OVER/(UNDER) RECOVERY

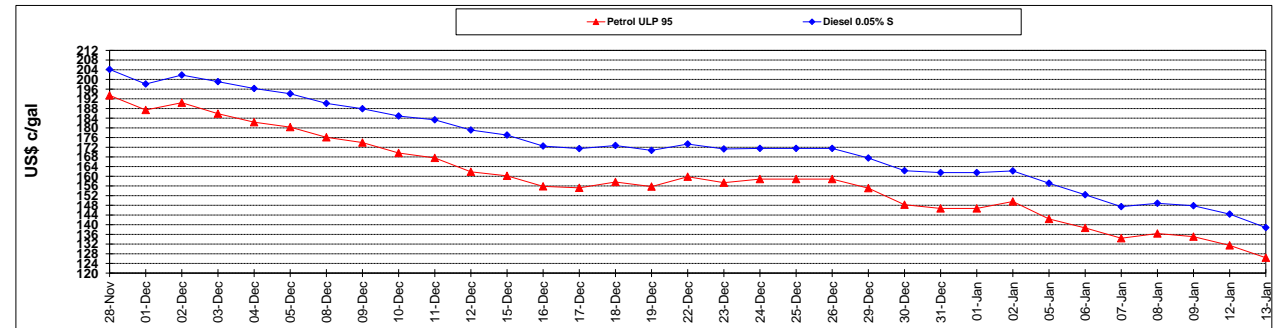
	PETROL 95	PETROL 93	DIESEL 0.05%	DIESEL 0.005%	ILL. PAR.
- MOVEMENT IN INTERNATIONAL PRODUCT PRICES	117.316	118.591	116.111	116.860	121.818
- MOVEMENT IN EXCHANGE RATE	(6.362)	(6.200)	(6.961)	(7.016)	(7.047)
AVERAGE UNIT OVER/(UNDER) RECOVERY 02/01/2015 - 13/01/2015	110.954	112.391	109.150	109.844	114.771

R/\$ EXCHANGE RATE - (R/\$ 11.5055 - 13/01/2015)

EXCHANGE RATE USED IN BASIC FUEL PRICE



INTERNATIONAL PRODUCT PRICES OF BASKET USED IN BASIC FUEL PRICE



BASIC FUEL PRICE IN SA CENTS PER LITRE

