

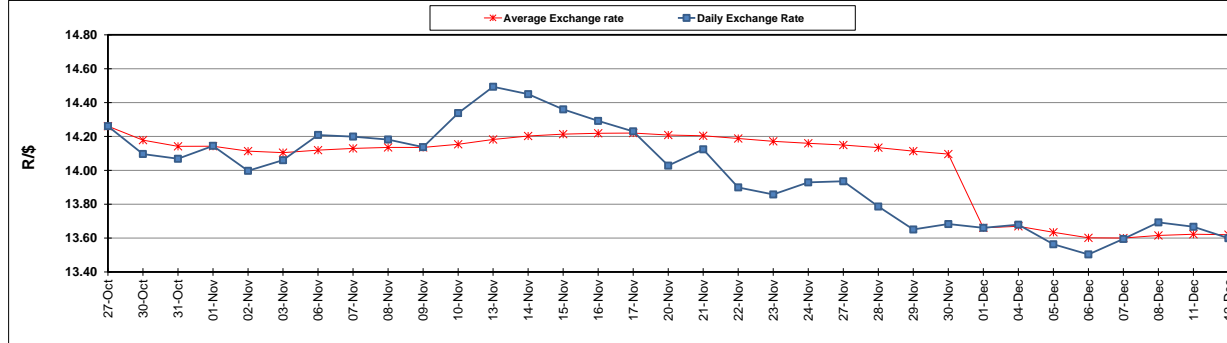
	PETROL 95 ULP	PETROL 93 ULP & LRP	DIESEL 0.05%	DIESEL 0.005%	ILL. PAR.
GAUTENG PUMP PRICE (SA c/l) AS FROM 07/12/2017	1 476.000	1 449.000	-	-	-
WHOLESALE PRICE (SA c/l) AS FROM 07/12/2017	-	-	1 295.630	1 302.030	865.388
SINGLE NATIONAL MAXIMUM RETAIL PRICE	-	-	-	-	1 119.000
BASIC FUEL PRICE - 12/12/2017 (SA c/l)	671.689	658.680	681.144	685.251	683.357
PRESS RELEASE CONTRIBUTION TO BFP 05/12/2017 - 12/12/2017 (SA c/l)	686.170	669.170	684.630	691.030	695.128
UNIT OVER/(UNDER) RECOVERY - 12/12/2017 (SA c/l)	14.481	10.490	3.486	5.779	11.771
AVERAGE BASIC FUEL PRICE 01/12/2017 - 12/12/2017	657.554	644.201	664.571	668.334	668.073
AVERAGE UNIT OVER/(UNDER) RECOVERY 01/12/2017 - 12/12/2017	3.453	(0.193)	(2.816)	0.946	(0.695)

ANALYSIS MOVEMENT OF AVERAGE OVER/(UNDER) RECOVERY

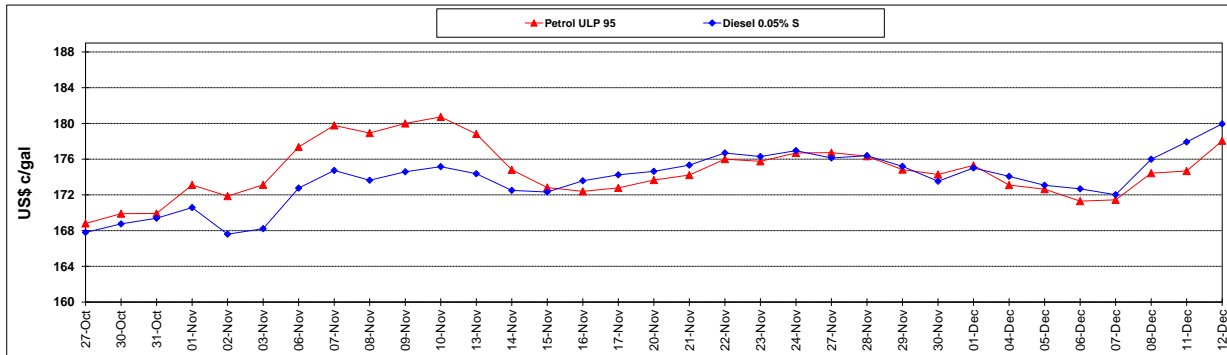
	PETROL 95	PETROL 93	DIESEL 0.05%	DIESEL 0.005%	ILL. PAR.
- MOVEMENT IN INTERNATIONAL PRODUCT PRICES	(19.546)	(22.726)	(26.061)	(22.431)	(24.063)
- MOVEMENT IN EXCHANGE RATE	23.000	22.533	23.245	23.377	23.368
AVERAGE UNIT OVER/(UNDER) RECOVERY 01/12/2017 - 12/12/2017	3.453	(0.193)	(2.816)	0.946	(0.695)

R/\$ EXCHANGE RATE - (R/\$ 13.5995 - 12/12/2017)

EXCHANGE RATE USED IN BASIC FUEL PRICE



INTERNATIONAL PRODUCT PRICES OF BASKET USED IN BASIC FUEL PRICE



BASIC FUEL PRICE IN SA CENTS PER LITRE

