

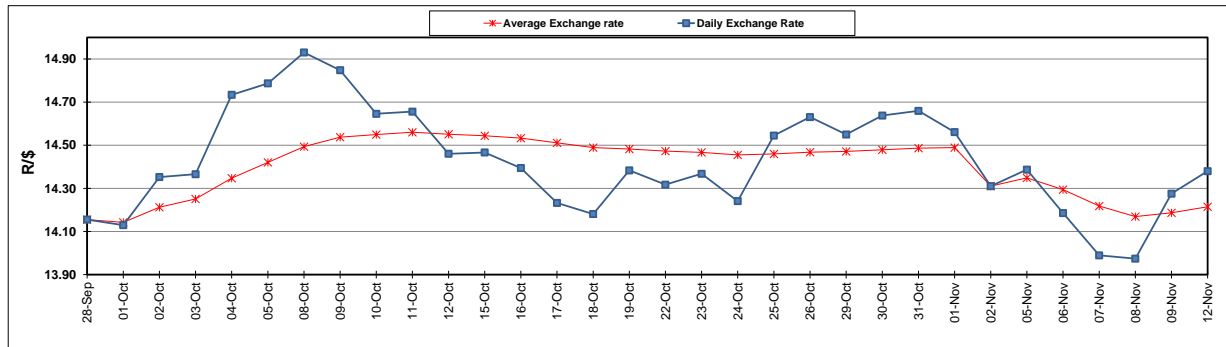
	PETROL 95 ULP	PETROL 93 ULP & LRP	DIESEL 0.05%	DIESEL 0.005%	ILL. PAR.
GAUTENG PUMP PRICE (SA c/l) AS FROM 07/11/2018	1 708.000	1 685.000	-	-	-
WHOLESALE PRICE (SA c/l) AS FROM 07/11/2018	-	-	1 612.750	1 620.150	1 085.088
SINGLE NATIONAL MAXIMUM RETAIL PRICE	-	-	-	-	1 409.000
BASIC FUEL PRICE - 12/11/2018 (SA c/l)	684.504	674.990	831.193	838.178	832.494
PRESS RELEASE CONTRIBUTION TO BFP 07/11/2018 - 12/11/2018 (SA c/l)	829.250	816.250	917.630	925.030	912.128
UNIT OVER/(UNDER) RECOVERY - 12/11/2018 (SA c/l)	144.746	141.260	86.437	86.852	79.634
AVERAGE BASIC FUEL PRICE 02/11/2018 - 12/11/2018	689.070	679.410	822.160	828.265	821.725
AVERAGE UNIT OVER/(UNDER) RECOVERY 02/11/2018 - 12/11/2018	149.575	146.234	84.328	84.336	78.403

ANALYSIS MOVEMENT OF AVERAGE OVER/(UNDER) RECOVERY

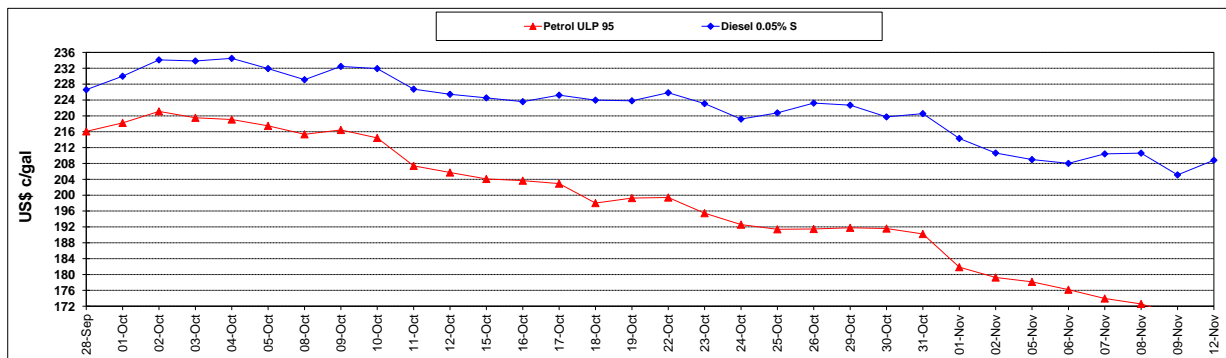
	PETROL 95	PETROL 93	DIESEL 0.05%	DIESEL 0.005%	ILL. PAR.
- MOVEMENT IN INTERNATIONAL PRODUCT PRICES	136.257	133.104	68.438	68.329	62.523
- MOVEMENT IN EXCHANGE RATE	13.317	13.130	15.889	16.007	15.880
AVERAGE UNIT OVER/(UNDER) RECOVERY 02/11/2018 - 12/11/2018	149.575	146.234	84.328	84.336	78.403

R/\$ EXCHANGE RATE - (R/\$14.3800 - 12/11/2018)

EXCHANGE RATE USED IN BASIC FUEL PRICE



INTERNATIONAL PRODUCT PRICES OF BASKET USED IN BASIC FUEL PRICE



BASIC FUEL PRICE IN SA CENTS PER LITRE

